

# Welcome

## Welcome to the University of Otago

Founded in 1869, the University of Otago is New Zealand's oldest university with an international reputation for excellence in teaching and research. Otago is a top Australasian university and, as a founding member of the Matariki network of international universities, has a global reach.

Students enrolled at Otago, whether at any of the University's regional hubs, or through distance courses, can expect access to up-to-the minute knowledge, guided by world-renowned experts and delivered through sophisticated learning technologies. Otago graduates are in high demand – both within New Zealand and internationally.

Otago is committed to supporting distance learning in fields where the University has specialist knowledge and expertise. Since 1985, the University has delivered a range and variety of courses in the Humanities, Business, Sciences and Health Sciences. Our courses are comprehensive, known for their rigour and relevance to the modern world. They are also accessible: the latest technologies support students' learning.

As an international university grounded in the South Island community, Otago welcomes enrolments from throughout the Australasian and Pacific regions and extends this to those from all parts of the world. I warmly invite you to join our University by enrolling in one of our distance learning programmes.

Nau mai, Haere mai.



Professor Harlene Hayne  
VICE-CHANCELLOR

## Welcome to Otago's Distance Learning Programme

The University of Otago has over 120 programmes available for you to study by distance. With our emphasis on providing distance programmes in areas where we have specialist knowledge and expertise, it isn't surprising to find that a majority of programmes focus on aspects of the Health Sciences. However, we also have a number of programmes in the Sciences and Humanities fields, in areas of particular expertise such as Dietetics, Clothing and Textile Sciences, Indigenous Studies, Theology and Religion, and Social Work and Community Development.

Our distance papers are taught by people who are wonderfully knowledgeable about, and interested in, the subjects they teach. Not surprisingly, given Otago's research strength, they are also excellent and highly committed researchers. We have great research-informed teaching programmes. Another strength is the support that comes from the administrative staff who underpin the workings of each paper. These people are pivotal in ensuring that the papers run smoothly.

It's not all about us though. Many of you will be studying because you want to update your professional knowledge or advance your career. Others will be studying out of interest or to satisfy a sense of curiosity about a particular topic. Whatever your motivation, our aim is to provide you with a great Otago learning experience and to help you attain the goals you have set for yourself in your course of study.

Best wishes for your study this year.



Dr Bill Anderson  
DIRECTOR, DISTANCE LEARNING

# Distance Education at Otago

The University of Otago's distance learning programmes enable you to update your qualifications wherever you live in New Zealand and beyond. Distance study enables you to connect with the best minds without leaving your home or workplace. While the University's outstanding reputation for excellence in research attracts a diverse range of learners to the varied offerings, a large number of distance students are involved in postgraduate study, working to advance their careers or keep abreast of the latest developments in their field.

## UNIQUE PROGRAMME

Distance study at the University of Otago is focused on those areas in which the University has specific expertise. You will see many Health Sciences papers, reflective of Otago's reputation for excellence in medicine and related health sciences fields. The full range of offerings draws on established strengths in responding to identified needs within the widespread communities we serve.

## FLEXIBLE AND PERSONAL

Students value distance education for the flexibility it offers. Most learning occurs in your space, at your time. When you are working with others, the emphasis is on understanding you as a learner and supporting your engagement with the course.

## LIFELONG LEARNING

Learning never stops. The University's excellence in research signals its commitment to understanding more about the world around us. In the same way, the distance programme provides opportunities for students to continue learning, to build on current qualifications, and to stay up to date in their own areas of expertise.

## PROFESSIONAL OR PERSONAL INTEREST

Otago distance students are a diverse group. Many are professionals who are studying to enhance their qualifications. For them, the interplay of work and study forms an important part of enriching their understanding of what they are learning. Others are studying for personal interest, drawing on the rich, research-informed teaching expertise that Otago staff bring to their interactions with students. For both groups, Otago study means excellence.

## GETTING STARTED

Choosing the right paper to study is sometimes difficult. This prospectus describes the papers available and tells you who to contact for advice about your academic programme and the way in which your paper or course may be organised. **It is strongly recommended that you consult a course advisor before selecting your papers.** With that advice you can enrol with confidence.

You'll be sent an *Information and Support Booklet* when we receive your application for enrolment. This information is also available online at [www.otago.ac.nz/distancelearning](http://www.otago.ac.nz/distancelearning). The booklet provides very useful information about the services the University provides for you while you study. It also gives advice about how you can make your study an enjoyable and successful experience.

Getting started involves one last thing. For the last step of enrolment you will be sent a Form for Course Approval that you need to sign and return as soon as possible. This confirms your enrolment at the University of Otago. (More detail is in the Enrolment and Fees section later in this prospectus.)

## LEARNING WITH OTAGO

Once you've enrolled, study begins. You'll get access to course materials and to a range of ways of communicating with your lecturer and interacting with your fellow students. In effect, you'll be able to create a learning space for yourself.

## COURSE MATERIAL

You'll receive information about how the course will be run; along with details of study modules and assessments and required readings. In many courses, course material is accessed electronically through the internet or via CD-ROM or DVD.

## INTERACTION WITH OTHERS

Distance learning provides you with considerable control over when you spend time studying. At Otago we also recognise that learning on your own all the time isn't always the best way to develop your understanding of the topics you're studying.

Interactions with your lecturer and your fellow students give opportunities to broaden your perspectives and develop critical, analytical and problem-solving skills. Connection with other people who share your enthusiasm for the subject you're studying enlivens your self-directed study and links you to a broader community of enquiry. You'll be creating a learning space for yourself where you might be:

- ~ talking with your lecturer and other students in real time to get immediate feedback on ideas
- ~ discussing ideas online, over time, allowing you to consider evolving perspectives in a time-flexible manner
- ~ studying independently, accessing digital and hardcopy resources designed to help focus your study
- ~ engaging independently with lecturers as they present core teaching material for your course of study.

Your study may involve some or all of the following:

#### **Web and Audioconference Sessions**

Web and audio conference teaching promotes and strongly emphasises participatory study. Sessions are a combination of lecture and tutorial and can easily involve a range of experts from throughout New Zealand or other parts of the world.

#### **Going Online**

The opportunity to access course materials and library resources online and to interact with lecturers and fellow students via the internet will considerably enhance your study. Most courses require access to both the internet and email.

#### **Videoconference Sessions**

Some papers include videoconference sessions for students who can participate from the University's centres in Auckland, Dunedin and Wellington.

#### **Residential Schools/Workshops**

Some programmes require you to attend residential schools on campus in New Zealand, although not necessarily for all papers. These schools may vary in length from a day to a week and may be held in Auckland, Christchurch, Dunedin or Wellington, or at various other locations throughout New Zealand.

Papers which do not require attendance at any course component in New Zealand are indicated with an icon.

### **SUPPORTING LEARNERS**

The University supports distance students in a number of ways:

#### **STUDY SUPPORT**

There is a wealth of information for students available on the University's distance learning website, at [www.otago.ac.nz/distancelearning](http://www.otago.ac.nz/distancelearning), including tips for successful study; managing university communications; accessing online resources; and web links for help with assignments such as finding and referencing information; academic writing; changing your course; and examinations.

#### **UNIVERSITY OF OTAGO LIBRARY**

[www.library.otago.ac.nz](http://www.library.otago.ac.nz)

The University of Otago has a world class library aimed at supporting staff and students engaged in teaching, learning, study and research. Increasingly library resources are available online as e-journals and e-books and can be accessed anywhere, anytime. These are particularly useful for people studying at a distance. The Library employs subject specialist liaison librarians who can assist you in your area of study. Find their contact details at <http://otago.libguides.com/Distance>, under the "Help with Assignments" tab. This section also has a quick overview and guide to getting started for your subject area.

#### **DISTANCE STUDENTS**

<http://otago.libguides.com/Distance>

This website has been developed specifically for distance students and has a section outlining the services offered by the Distance Library Service (DLS). Any student enrolled in a University of Otago distance course or paper is eligible to use this service. Students can request research support, plus advice and help in accessing library resources by contacting the DLS. Through the DLS you can also request to have books, journal articles and copies of chapters sent to you at no charge. A guide to the Distance Library Service is incorporated in the *Information and Support Booklet* which is sent to all enrolled distance students.

Email [distance.library@otago.ac.nz](mailto:distance.library@otago.ac.nz)

Tel 0800 347 826 (0800 DISTANT) within New Zealand

Tel +64 3 479 8940

#### **COMPUTING**

Help with your course-related computing needs is available via the free (within New Zealand) telephone number. Distance students are also welcome to use the computer resource rooms in Auckland, Wellington and Dunedin – some of which are available 24 hours per day.

#### **ITS Service Desk**

Tel 0800 479 888 Freephone (within NZ) or  
64 3 479 8888

Hours 8.30am – 5.00pm Monday to Friday (during semester)  
10.00am – 5.00pm Weekends (during semester)  
8.30am – 5.00pm Summer School and semester breaks

Email [its.servicedesk@otago.ac.nz](mailto:its.servicedesk@otago.ac.nz)

Web [www.otago.ac.nz/its](http://www.otago.ac.nz/its)

#### **After Hours Help from Student IT Services**

Tel 03 479 5170

Hours 9am – 9pm Monday to Saturday, and  
10am – 9pm on Sunday during semesters

#### **Online Chat**

Log in at [www.otago.ac.nz/studentonlinehelp](http://www.otago.ac.nz/studentonlinehelp)

Students can chat or even share their screen with student advisors if they wish.

Web [www.otago.ac.nz/its/services/help/studenthelp.html](http://www.otago.ac.nz/its/services/help/studenthelp.html)

Services offered are similar to the Service Desk, including the ability to issue passwords and help with Blackboard login problems, but not to provide access to Blackboard or podcasting.

## STUDENTS WITH DISABILITIES

Disability Information and Support provides learning support, advice, advocacy and information to students with permanent, recurring or temporary impairments. The support provided is varied and includes assistance with enrolment, access to specialised equipment, note taking, individual subject tutoring, reformatting of course materials, and alternative examination arrangements. All services are free of charge and confidential.

Email [disabilities@otago.ac.nz](mailto:disabilities@otago.ac.nz)  
Tel 64 3 479 8235  
Fax 64 3 479 5873  
Web [www.otago.ac.nz/disabilities](http://www.otago.ac.nz/disabilities)

## TEACHING AND COUNSELLING SUPPORT

As a distance student you are encouraged to keep in regular contact with the staff responsible for providing your course. Coursebooks and the *Information and Support Booklet* provide names and addresses of staff to contact should you have concerns about any aspect of your study.

**Please note the availability of some papers may have changed since this prospectus was printed.**

**For up-to-date information, either contact the department concerned or check on the University's distance learning website at [www.otago.ac.nz/distancelearning](http://www.otago.ac.nz/distancelearning)**

# Enrolment and Fees

## ENROLMENT

As a first step, if you are intending to take any distance learning papers, you are encouraged to contact the department or departments concerned to check on your eligibility to take your planned course.

Every distance learning student must complete enrolment with the Admissions and Enrolment area of the University's central administration in every year in which papers are being taken. This is in addition to any correspondence with teaching departments.

Note: Admission to ALL undergraduate degrees is limited. These limitations do not apply to postgraduate or international students.

## UNIVERSITY ENTRANCE

Every student must be aged 16 or over by the first day of formal classes in his or her course and:

- ~ have obtained a university entrance qualification from the New Zealand school system (NCEA Level 3 passes or earlier New Zealand qualifications), or
- ~ be granted admission ad eundem statum (i.e. "at an equivalent level") at entrance level (normally on the basis of overseas school qualifications) or with credit (for students with passes, but not a completed degree from an overseas university or a non-university tertiary institution in New Zealand) or at graduate level (for students who have completed a degree or equivalent qualification at an overseas university or a non-university tertiary institution in New Zealand), or
- ~ be granted discretionary entrance (for domestic students under 20 years of age applying on the basis of NCEA Level 2 results), or
- ~ be granted special admission (for domestic students aged 20 years or over, who do not otherwise qualify for admission).

A student who has previously been admitted to another New Zealand university can normally transfer to the University of Otago on the basis of that entrance qualification, although it would still be necessary to submit a separate application for admission to postgraduate programmes and some other papers and courses. Applications for undergraduate study may be subject to the limitations as outlined above.

Students applying for admission to the University must be competent in the use and understanding of written and spoken English and may be required to provide evidence of proficiency in English as part of the application process.

All students are classified as either domestic or international students. Domestic students are those who are New Zealand citizens (including citizens of the Cook Islands, Tokelau and Niue), permanent residents of New Zealand or Australia who

are resident and studying in New Zealand, or Australian citizens resident and studying in New Zealand. All other students are international students (see next page for additional information).

International students (including New Zealand permanent residents studying outside New Zealand and Australian citizens and permanent residents studying outside New Zealand) will normally be charged international fees.

## THE ENROLMENT PROCESS

Detailed enrolment information can be found at [www.otago.ac.nz/study/enrolment](http://www.otago.ac.nz/study/enrolment) or in the *Guide to Enrolment* (available on request).

**You can apply for enrolment** online at the University's website [www.otago.ac.nz/OnlineReg](http://www.otago.ac.nz/OnlineReg). Applications should be completed by the following dates. Later applications may be accepted if facilities for tuition remain available, but you may be liable for an additional fee.

- ~ **10 December** – all new students and recommencing students (i.e. previously enrolled, but not in 2011 and/or 2012) taking Summer School, first semester or full-year papers or courses in 2013, and returning students (i.e. previously enrolled in 2011 and/or 2012)
- ~ **15 January** – all other returning students taking first semester or full-year papers or courses
- ~ **15 June** – students taking only second semester papers or courses.

All necessary documentation concerning entrance qualifications, name, date of birth, citizenship and/or residency must be provided at registration.

**Payment of fees** must be arranged by:

- ~ **11 January** (for Summer School papers) or
- ~ **10 February** (for courses beginning in the first semester) or
- ~ **10 July** (for courses beginning in the second semester).

Invoices for fees will be posted to students' home addresses.

Penalty fees will be imposed for late payment.

Course approval (for first and second semester and full-year papers) or course confirmation (Summer School papers) must be completed by:

- ~ **8 January** (for Summer School papers) or
- ~ **1 February** (for courses beginning in the first semester) or
- ~ **1 July** (for courses beginning in the second semester).

Course confirmation forms and forms for course approval will be posted to students' home addresses. It is essential that they be completed and returned to finalise enrolment. Late fees will be imposed if course confirmation or course approval is completed after the required dates.

Detailed information on enrolment procedures can be found in the *Guide to Enrolment* (available on request).

#### **Further information**

University Information Centre  
University of Otago  
PO Box 56  
Dunedin 9054  
New Zealand  
Tel 0800 80 80 98 within New Zealand  
1800 468 246 Australian freephone  
64 3 479 7000 from overseas  
Fax 64 3 479 8186  
Email [university@otago.ac.nz](mailto:university@otago.ac.nz)

#### **INTERNATIONAL STUDENTS**

All international students enrolling with the University for the first time must apply for admission using the standard online application form available on the University website at [www.otago.ac.nz](http://www.otago.ac.nz)

Full information about admission requirements and the application process is on the website at [www.otago.ac.nz/international](http://www.otago.ac.nz/international)

For those whose first language is not English, evidence of English language proficiency will be required.

An independent credentials evaluation may be required for students holding qualifications from certain countries.

International students studying in New Zealand must meet immigration requirements and have appropriate student visas or variations to work visas for each period of study and must also comply with New Zealand Government requirements for comprehensive medical and travel insurance. (In general, international students are not eligible for a student visa to study distance papers.)

#### **Further information**

International Office  
University of Otago  
PO Box 56  
Dunedin 9054  
New Zealand  
Tel 64 3 479 8344  
Fax 64 3 479 8367  
Email [international.admissions@otago.ac.nz](mailto:international.admissions@otago.ac.nz)

#### **AFTER ENROLMENT**

If you need to change your course in any way (adding, deleting or withdrawing from papers) after you have completed the enrolment process, you should contact the University Information Centre or the departments concerned to arrange to have the change formally recorded. Please note that at the time of print, these dates are subject to review. For the latest information see [www.otago.ac.nz/study/enrolment/changingcourse.html](http://www.otago.ac.nz/study/enrolment/changingcourse.html).

Papers can be added until 5.30pm on 14 January (for Summer School papers), 1 March (for first semester and full-year papers) and 12 July (for second semester papers).

If you withdraw from a paper by 14 January (Summer School papers) or 15 March (full year or first semester papers) or 26 July (papers beginning in the second semester), the paper will be deleted from your official academic record and tuition fees will be refunded (some conditions apply).

Later withdrawals are possible until 4 February (Summer School papers) or 3 May (papers beginning in the first semester) or 10 September (papers beginning in the second semester), but the paper will remain on your academic record (marked "Withdrawn") and liability for payment of fees remains unless there are exceptional circumstances beyond your control (e.g. medical reasons) which have compelled you to withdraw.

Later withdrawals cannot normally be recorded unless there are exceptional circumstances.

#### **FEES**

Fees must be paid by the dates specified above.

Tuition fees for 2013 will not be finalised until November 2012. Once set, tuition fee information for distance papers will be available on the University's website at [www.otago.ac.nz/distancelearning](http://www.otago.ac.nz/distancelearning)

#### **Further information**

Revenue Management Office  
University of Otago  
PO Box 56  
Dunedin 9054  
New Zealand  
Tel 64 3 479 9006  
Fax 64 3 479 9035  
Email [student.finance@otago.ac.nz](mailto:student.finance@otago.ac.nz)

General information  
[www.otago.ac.nz/study/fees](http://www.otago.ac.nz/study/fees)

Tuition fees per paper  
[www.otago.ac.nz/distancelearning](http://www.otago.ac.nz/distancelearning) for distance papers only  
[www.otago.ac.nz/study/fees/index.html#feebands](http://www.otago.ac.nz/study/fees/index.html#feebands) for all papers

International students  
[www.otago.ac.nz/international/otago002190.html#tuitionfees](http://www.otago.ac.nz/international/otago002190.html#tuitionfees)



# Higher Education Development Centre

The University of Otago's Higher Education Development Centre offers two programmes for those wanting to improve their teaching skills: the Postgraduate Certificate in Higher Education (PGCertHighE) and the Postgraduate Diploma in Higher Education (PGDipHighE).

## HIGHER EDUCATION

### PROGRAMME OF STUDY

#### *Postgraduate Certificate in Higher Education (PGCertHighE)*

Enrolment for the Postgraduate Certificate in Higher Education is restricted to teachers who are engaged in some teaching in the tertiary sector. The certificate consists of two papers that can be completed in a minimum of one and a maximum of three years' part-time study.

Students wishing to enrol in the Postgraduate Certificate in Higher Education endorsed in Clinical Teaching should be currently engaged in some clinical teaching. In HEDX 501 and HEDX 502 they will be expected to focus on aspects of clinical teaching and learning.

The following papers are available:

- 🌐 ***HEDX 501 Critical Reflection on Higher Education***  
**30 points (full year)**  
Examines personal theories of tertiary teaching within a comparative framework of contemporary literature and practice. Provides participants with opportunities to explore issues and make changes to their current teaching practices.
  - 🌐 ***HEDX 502 Learning Theory and Practice in Higher Education***  
**30 points (full year)**  
Examines contemporary research on student learning. Explores the effects of teaching practices on how students learn in order to enhance students' learning outcomes.
- Both HEDX 501 and 502 are normally taken concurrently. Internet access is essential for these papers.

### PROGRAMME OF STUDY

#### *Postgraduate Diploma in Higher Education (PGDipHighE)*

Enrolment for the Postgraduate Diploma in Higher Education is restricted to teachers who are engaged in some teaching in the tertiary sector. The diploma consists of the two papers from the certificate plus the two papers below, and can be completed in a minimum of two and a maximum of four years' part-time study. Students wishing to enrol in the Postgraduate Diploma in Higher Education endorsed in Clinical Teaching should be currently engaged in some clinical teaching. In HEDX 501, 502, 503 and 510 they will be expected to focus on aspects of clinical teaching and learning.

The following papers are available in addition to the previous two papers:

- 🌐 ***HEDX 503 Research into Higher Education and Learning***  
**30 points (first semester)**  
Participants explore methodological issues and plan and carry out a research project around a specific aspect of their teaching and/or student learning. The project must be able to advance participants' teaching in significant ways.
- 🌐 ***HEDX 510 Special Topic***  
**30 points (second semester)**  
This paper builds on HEDX 503 and involves completion of a research project.

Internet access is essential for these papers.

#### **Further information**

Dr Sarah Stein  
Higher Education Development Centre  
University of Otago  
PO Box 56  
Dunedin 9054  
Tel +64 3 479 5360  
Email sarah.stein@otago.ac.nz



## Profile

### **MATIU PAYNE (Kāi Tahu, Ngāti Mutunga, Ngāti Kinohaku)**

Master of Indigenous Studies

“My lecturers have been outstanding in terms of their knowledge and engagement online.”

“I grew up in a rural Banks Peninsula community called Koukourarata (Port Levy). This was my pā, and base of my hapū Kāi Tūtehuarewa, of the Kāi Tahu people.

“I’m working full-time and I chose postgraduate study via distance because I could fit it in with my work – I’m currently Regional Operations Manager at Te Wānanga o Aotearoa in the Tainui region – and family life, as my wife Dione and I have three boys. Dione is doing her PhD in a discipline that’s similar to mine and that’s how I became interested. Most of my study is done after hours when the kids are asleep, or during work study time granted by my employer:

“It was this specific course and the flexibility that wasn’t replicated anywhere else that made me choose Otago for my master’s degree. I also always loved Dunedin and my previous time at Otago when I started my undergraduate degree. So far I’ve completed three papers and now I’m working on my 20,000-word research report. *Do Selectively Superior Whāngai Succession Rights Exist for Māori Land?*

“Whāngai are children who have been customarily adopted in accordance with tikanga Māori. My dissertation explores the circumstances that gave rise to selective superiority for whāngai when succeeding to Māori land, and also shows the inequities blood kin and whāngai alike face when dealing with different legislation in Aotearoa/New Zealand.

“My lecturers have been outstanding in terms of their knowledge and engagement online, and my supervisor is really supportive, even when his comments are challenging ideas I’ve put forward. This is part of the fun of it! I also love using the University Library’s online databases.

“In the future I want to proceed on to my PhD in the same discipline. My master’s qualification will be a big step towards this.”





# Humanities

## HUMANITIES

The Division of Humanities offers arts, social sciences and humanities programmes at undergraduate and postgraduate level. Research in the division is characterised by excellence and diversity, which informs teaching across all subject areas. The division offers a range of distance papers and programmes in Education, Indigenous Studies, Religious Studies, Social Work, and Theology.

### EDUCATION

The University of Otago College of Education offers internet-based postgraduate papers ideal for practising teachers looking to upgrade or extend their existing qualifications, and for other graduate professionals with an interest in education.

#### PROGRAMMES OF STUDY

*Postgraduate Diploma in Arts Subjects (PGDipArts) in Education*

*Master of Education (MEd)*

*Master of Arts (MA) in Education*

*Postgraduate Certificate in Teaching (PGCertTchg)*

*Postgraduate Diploma in Teaching (PGDipTchg)*

*Master of Teaching (MTchg)*

*Doctor of Education (EdD)*

#### PROFESSIONAL QUALIFICATIONS

In addition to the Postgraduate Diploma in Arts Subjects (PGDipArts), the degrees of Master of Education (MEd) and Master of Arts (MA), three professional qualifications are available: the Postgraduate Certificate in Teaching (PGCertTchg), the Postgraduate Diploma in Teaching (PGDipTchg) and the Master of Teaching degree (MTchg).

Admission requirements for the professional programmes include experience of working in a relevant field of education

and evidence of ability for advanced academic study. The Doctor of Education degree (EdD) is designed with an explicitly professional orientation as an alternative to the PhD.

The internet is the main delivery system. Students will require access to an internet-connected computer. Previous computing experience is not required. All papers are internally assessed. There are no final examinations.

Please note that not all papers may be offered in any one year.

For the most up-to-date information on paper availability visit the University of Otago College of Education website: [www.otago.ac.nz/education](http://www.otago.ac.nz/education)


The following papers are offered:

 ***EDUX 317 Information and Communication Technology in Education***  
***18 points (second semester)***

This paper is an introduction to the use of information and communication technology in schools. Participants in this paper will have exposure to a range of theoretical issues and practical applications related to computer use in education. Previous computing experience is not required. (May not be credited together with EDUX 435.)

Prerequisite: 36 EDUC points or 108 points

-  **EDUX 407 Researching Educational Issues**  
**20 points (full year)**  
 Study of the theory, philosophy and practice of research in education, including a critical analysis of selected quantitative and qualitative methodologies and of historical, philosophical, sociological and Māori-preferred approaches to disciplined inquiry in education.  
 Prerequisite: 54 300-level EDUX or EDUC points  
 Restriction: EDUC 407, EDUC 351, EDUX351
-  **EDUX 413 Advanced Internet-based Learning**  
**20 points (second semester)**  
 The aim of this paper is to examine in-depth some pertinent issues and applications of computer-mediated communication in education. Participants in this paper will have exposure to a range of issues, both conceptual and practical, related to computer-mediated communication in a variety of learning environments.  
 Prerequisites: 54 300-level EDUC or EDUX points, or special approval
-  **EDUX 421 Mathematics Education: Learning and Teaching**  
**20 points (not offered 2013, expected to be offered 2014)**  
 Development of a critical and informed stance toward the student's own practice and the context in which that practice is based.  
 Prerequisite: 54 300-level EDUX or EDUC points
-  **EDUX 423 Technology-enhanced Learning**  
**20 points (first semester)**  
 This paper introduces various theoretical perspectives on learning with computers. It includes a review of social and cognitive interactions and implications of computer-based learning environments. Issues in computer-supported collaborative learning are considered.  
 Prerequisite: 54 300-level EDUC or EDUX points, or special approval
-  **EDUX 428 Special Topic**  
**20 points (not offered 2013, expected to be offered 2014)**  
 Prerequisite: 54 300-level EDUC or EDUX points, or special approval
-  **EDUX 429 Special Topic 2**  
**20 points (not offered 2013, expected to be offered 2014)**  
 Prerequisite: 54 300-level EDUX or EDUC points, or special approval
-  **EDUX 430 Junior and Young Adult Literature in Cultural Contexts**  
**20 points (full year)**  
 Examines the origins and development of literature produced for children and young adults. Investigates the socially constructed notion of childhood and critiques texts using the intersections between gender, class and race as categories of analysis.  
 Prerequisite: 54 300-level EDUX or EDUC points, or special approval
-  **EDUX 432 Special Topic**  
**20 points (second semester)**  
 Prerequisite: 72 300-level EDUX or EDUC points, or special approval
-  **EDUX 433 Special Topic**  
**20 points (first semester)**  
 Prerequisite: 54 300-level EDUX or EDUC points, or special approval
-  **EDUX 435 Introduction to Internet-based Learning**  
**20 points (second semester)**  
 This paper focuses on the use of the internet and the world wide web as tools for teaching, learning and research. It examines how teaching resources can be searched, gathered and evaluated on the internet. Ethical issues related to the use of the internet are also discussed. (May not be credited together with EDUX 317.)  
 Prerequisite: 54 300-level EDUC or EDUX points, or special approval. This paper is not available to students who have already completed EDUX 413.
-  **EDUX 438 Leadership for Learning**  
**20 points (not offered 2013, expected to be offered 2014)**  
 A critical examination of theory, research and practice relating to leadership for learning in educational settings. Students will review a range of models, case studies and research findings.  
 Prerequisite: 54 300-level EDUC or EDUX points, or special approval
-  **EDUX 439 Strategic Educational Management**  
**20 points (full year)**  
 A critical examination of theory, research and practice relating to strategic educational management across a range of education sectors. Students will review a range of models, case studies and research findings.  
 Prerequisite: 54 300-level EDUC or EDUX points, or special approval
-  **EDUX 440 Critical Analysis of Teaching**  
**20 points (full year)**  
 This paper provides a critical examination of existing knowledge about effective teaching, reviewing a wide variety of models, case studies and research findings.  
 Prerequisite: 54 300-level EDUC or EDUX points, or special approval
-  **EDUX 441 Researching Personal Teaching Practice**  
**20 points (full year)**  
 This paper is an introduction to the nature of disciplined inquiry into personal teaching practice utilising a range of research methodologies. Students will be required to plan and implement a disciplined investigative inquiry into their own teaching practices.  
 Prerequisite or corequisite: EDUX 440, or special approval
-  **EDUX 444 Pacific Education Issues: Culture, Identity and Schooling**  
**20 points (second semester)**  
 Explores culture, identity, values, diaspora, politics, policy, epistemology, pedagogy, and ways of knowing as they impact on Pacific children's experiences of schooling both in New Zealand and the Pacific region.  
 Prerequisite: 72 300-level EDUX or EDUC points, or special approval
-  **EDUX 450 eTeaching, eMentoring and eLeadership**  
**20 points (full year)**  
 Theories and practices of eTeaching, eMentoring, and eLeadership in educational settings. A small supervised school-based project is required.  
 Prerequisite: 54 300-level EDUX or EDUC points, or special approval

 **EDUX 451 Inclusive Education**  
**20 points (full year)**

Inclusive education from the perspectives of children with special needs and those who support them throughout the education system.

Prerequisite: 54 300-level EDUX or EDUC points, or special approval

 **EDUX 453 Exercising Professional Leadership**  
**20 points (full year)**


Examination of a range of contemporary issues which impact on effective educational leadership.

Prerequisite: 54 300-level EDUX or EDUC points, or special approval

 **EDUX 459 Equality, Equity and Education**  
**20 points (full year)**

Explicates and compares the features of equality being demanded in a selection of educational research, policies and practices. Explores the assumptions and consequences of each, critically appraises them, and addresses potential tensions between them.

Prerequisite: 54 300-level EDUX or EDUC points, or special approval

 **EDUX 461 The Construction of Curriculum in Early Childhood Education**  
**20 points (full year)**

Exploration of the construction of curriculum in early childhood education.

Prerequisite: 54 300-level EDUX or EDUC points, or special approval

 **EDUX 480 Research Essay**  
**40 points (full year)**

Limited to BA(Hons), PGDipArts, MEd

 **EDUX 490 MEd Dissertation**  
**60 points (12 months)**

Limited to MEd

 **EDUX 590 Professional Practice Portfolio**  
**60 points (12 months)**

This paper aims at developing students' professional skills as teachers. Students will engage in critical reflection of their professional practice by documenting their goals, growth, achievement and professional attributes throughout the course of study. Students are asked to produce a portfolio that comprises four pieces of work documenting their learning experiences, as well as social and professional development.

Prerequisite: EDUX 440

Limited to MTchg

Note: This is a 12-month course, with a first semester intake only.

**EDDX 901 Doctor of Education Coursework**  
**60 points (12 months)**

Engages students in critical reflection on their professional practice and prepares them for their thesis and research-to-practice portfolio.

Limited to Edd

Specific requirements for programmes are:

**Postgraduate Diploma in Arts Subjects in Education**  
**(PGDipArts)**

EDUX 407, EDUC/EDUX 480, and 60 further 400-level EDUX or EDUC points

**Master of Education (MEd)**

For students with a BA majoring in Education, BEd, BTchg or BEd(Tchg): EDUX 407, EDUC/EDUX 480, EDUC/EDUX 490 and 180 further 400-level EDUC/EDUX points

**For students with a BA(Hons), PGDipArts or PGDipTchg**  
EDUC/EDUX 490 and 60 further points of 400-level EDUC/EDUX points

**Postgraduate Certificate in Teaching (PGCertTchg)**

EDUX 423, EDUX 450 and 20 further 400-level EDUX points (in ICT papers)

**Postgraduate Diploma in Teaching (PGDipTchg)**

EDUX 440 OR EDUX 450, EDUX 441 and 80 further 400-level EDUC or EDUX points

**Master of Teaching (MTchg)**

EDUX 440 OR EDUX 450, EDUX 441, EDUX 590 and 80 further 400-level EDUC or EDUX points

**Information for the papers and programmes listed above can be obtained from:**

Dr Fiona McDonald  
University of Otago College of Education  
University of Otago,  
PO Box 56, Dunedin 9054  
Tel 03 479 4949  
Fax 03 479 8349  
Email fi.mcdonald@otago.ac.nz

**MĀORI, PACIFIC AND INDIGENOUS STUDIES**

Te Tumu, the School of Māori, Pacific and Indigenous Studies, offers the degree of Master of Indigenous Studies by distance learning.

**PROGRAMME OF STUDY**

**Master of Indigenous Studies (MIndS)**

The programme of study consists of a core paper (INGX 501), and EITHER a research thesis (INGS 5)\* OR a research paper (INGX 590) and two approved elective papers at 400-level. Some of the elective papers are available only to on-campus students, but five – MAOX 404, MAOX 407, MAOX 415, MAOX 418 and PACX 401 – are available by distance learning.

**INGX 501 Indigenous Theory and Method**

**20 points (semester 1)**

Introduces key theory and method questions for indigenous studies, focusing on the central challenge of defining "indigenous".

**INGX 590 Research Report**

**60 points (full year)**

A supervised research project of no more than 18,000 words (excluding notes, appendices, bibliography) on an approved topic.

**INGX 5 Research Thesis**

**100 points (full year)**

A supervised research project of no more than 32,000 words (excluding notes, appendices, bibliography) on an approved topic.\*

**INGX 510 Special Topic**

**20 points (not offered 2013, expected to be offered 2014)**

**MAOX 404 Māori Land and Lore**

**20 points (not offered 2013, expected to be offered 2014)**

An examination of Māori attitudes to whenua (land) through tikanga (customary lore), and the influence of colonialism in the Māori world using Land Court minute books.

### **MAOX 407 Presenting Pacific Histories**

**20 points (first semester)**

Themes and theories in the representation of indigenous histories of Aotearoa and other islands of the Pacific.

### **MAOX 415 Te Whakahaora i Ngā Reo Taketake**

**20 points (not offered 2013, expected to be offered 2014)**

A comparative study of indigenous language decline and revitalisation that encompasses the impact of activism, education and politics on indigenous languages in Aotearoa, Hawai'i, Canada and around the world.

Prerequisite: 36 300-level EDUC, LING, MAOR, PACI or POLS points

### **MAOX 418 He Turaki Aweke: Deconstructing Dominant Representations of Māori**

**20 points (not offered 2013, expected to be offered 2014)**

A critical analysis of contemporary representations of Māori in film, literature, news media, advertising, digital technology and television, employing decolonial and deconstructive theoretical frameworks.

### **PACX 401 Polynesian Women**

**points (second semester)**

Examines indigenous women's roles (traditional and contemporary) within selected Polynesian communities. Topics include birthing practices, kinship and relationship practices, and female physicality.

\* Subject to approval

#### **Further information**

Administrative Assistant  
Te Tumu School of Māori, Pacific and Indigenous Studies  
University of Otago  
PO Box 56, Dunedin 9054  
Tel 03 479 8624  
Fax 03 479 8525  
Email minds@otago.ac.nz

## **RELIGIOUS STUDIES**

The following papers are available in the first semester 2013:

### **RELX 102 Hinduism and Buddhism**

**18 points**

The ancient origins, classical traditions and contemporary forms of Hinduism and Buddhism including Hindu mythology, teachings of the Buddha, religious disciplines such as yoga and meditation, expression of devotion in arts and architecture, spread of Indian religions to the West.

### **RELX 214/306 New Religious Movements**

**18 points**

A study of new religious movements (NRMs) in the modern world, with a particular focus on NRMs in East Asia. The history, membership and main features of various religious organisations.

### **RELX 226/326 Mahayana Buddhism**

**18 points**

The origins of Mahayana Buddhism in India, its spread to Tibet and East Asia and its relationship to other forms of Buddhism, including Theravada.

### **RELX 328/428 Life of the Buddha**

**18/20 points**

Visual and literary narrative traditions about the life of the Buddha, and the influence of these narratives on Buddhist belief and practice.

### **SANX 111 Introductory Sanskrit 1**

**18 points**

A reading-based beginners' paper covering the basic elements of Classical Sanskrit grammar and vocabulary, designed to develop reading skills in Classical Sanskrit.

The following papers are available in the second semester:

### **RELX 101 Judaism, Christianity and Islam**

**18 points**

An introduction to the three major religions which originated in the Middle East.

### **RELX 207/324 The Religion of Islam**

**18 points**

An examination of Muslim religious thought and practice, including the Shi'ite and Sufi traditions, with an analysis of the current debates regard the Muslim identity among revivalists, conservatives and modernists.

### **RELX 216/316 Zen Buddhism**

**18 points**

The history, doctrines, and practices of Chan Buddhism in China and Zen Buddhism in Japan. Zen practices, as meditation and koan, and the encounter with the "West".

### **SANX 112 Introductory Sanskrit 2**

**18 points**

A continuation of SANX 111, including the study of passages from the Bhagavad Gita and other texts.

#### **Further information**

Departmental Administrator  
Department of Theology and Religion  
University of Otago  
PO Box 56, Dunedin 9054  
Tel 03 479 8901  
Fax 03 479 5158  
Email religion@otago.ac.nz

## **SOCIAL WORK**

The papers in this area draw on an ecological approach to understanding and intervening on social problems. Acknowledging the challenge of biculturalism and the Treaty of Waitangi in the context of social work in Aotearoa/New Zealand is a fundamental aspect of developing an understanding in this area. Students are encouraged to engage in these papers through the development of personal reflection, critical analysis and direct skills to prepare them for social work practice with individuals, families, communities, organisations, and in social policy environments.

#### **PROGRAMME OF STUDY**

##### **Bachelor of Social Work (BSW)**

##### **Bachelor of Social Work with Honours (BSW (Hons))**

The Department of Sociology, Gender and Social Work offers a four-year degree recognised by the Social Work Registration Board. However, distance papers are offered from year three (300 level) of this programme. Entry is by selection, and distance students who hold either an existing related bachelor's degree, or other related qualifications and experience are welcome to apply for acceptance to the BSW programme. Distance students may also qualify for the Honours programme after completion of the third-year papers. The degree is not currently available to students studying outside New Zealand.

The following papers are offered:

***SOWX 301 Theories and Methods of Social Work***  
**18 points (first semester)**

An introduction to the main theoretical traditions informing the practice of social work in the Aotearoa/New Zealand context, their expression in Social Work methods, and the location of these theories and models within an overview of theoretical perspectives.

Limited to: BSW

***SOWX 302 Social Work for Children and Families - Analysis and Theory***  
**18 points (first semester)**

Selected social issues commonly affecting children and families in Aotearoa/New Zealand. Social work responses and related conceptual issues in social work assessment.

Restrictions: SOWK 316, SOWK 302, SOWX 316

Limited to: BSW

***SOWX 303 Communities and Organisations - Analysis and Theory***  
**18 points (first semester)**

Organisational and community theories, patterns and change and their application within community and social services in Aotearoa/New Zealand.

Restriction: SOWK 303

Limited to: BSW

Note: May not be taken by students who have passed both SOWK 234 or SOWX 234 and SOWK 235 or SOWX 235

***SOWX 304 Kaupapa Maori, and Indigenous Approaches to Social Work***  
**18 points (second semester)**

The application of Kaupapa Māori, Pacifica and indigenous approaches, including cross-cultural contexts, to social work practice.

Restrictions: SOWK319, SOWK304, SOWX319

Limited to: BSCW, BSW

***SOWX 320 Introduction to Professional Practice***  
**18 points (first semester)**

Introductory study and application of social work roles and skills in preparation for practice.

Restrictions: SOWK 320, 420, SOWK 420

Limited to: BSCW, BSW

***SOWX 392 Fieldwork Practice 1***  
**36 points (full year)**

Introduction and orientation in social service and community settings and supervised practical work in the field

Prerequisites: SOWK 320 or SOWX 320

Restrictions: SOWK 491, SOWK 392, SOWX 491

Limited to: BSW

***SOWX 402 Social Work for Children and Families: Advanced Practice***  
**20 points (first semester)**

Advanced practice skills with children and families

Prerequisite: 126 300-level SOWK or SOWX points

Restrictions: SOWK 401, SOWK402, SOWX401

Limited to: MA, BSW(Hons), BSW

***SOWX 403 Communities and Organisations - Advanced Practice***  
**20 points (first semester)**

Professional frameworks of organisational and community change and development practice.

Prerequisite: 126 300-level SOWK or SOWX points

Restrictions: SOWK 404, SOWX 403, 404

Limited to: MA, BSW(Hons), BSW

***SOWX 405 Social Work Issues Across the Lifespan***  
**20 points (first semester)**

A lifespan perspective on issues encountered in social work practice.

Prerequisite: 126 300-level SOWK or SOWX points

Restriction: SOWK 405

Limited to: MA, BSW(Hons), BSW

***SOWX 406 Social Problems: Policies and Practice Models***  
**20 points (second semester)**

Methods and theories of social, personal and organisational change in response to social problems. These are developed in relation to applied practice outcomes in social work.

Prerequisite: 126 300-level SOWK or SOWX points

Restrictions: SOWK318, SOWX 318, SOWK 406

Limited to: MA, BSW(Hons), BSW

***SOWX 410 Advanced Studies Special Topic***  
**20 points (second semester)**

Special topic considering an advanced case study in social work practice.

Restriction: SOWK410

Limited to: MA, BSW(Hons), BSW

***SOWX 480 Research Project***  
**20 points (full year)**

Prerequisite: 126 300-level SOWK or SOWX points

Restriction: SOWK480

Limited to: MA, BSW(Hons), BSW

***SOWX 492 Fieldwork Practice 2***  
**40 points (full year)**

Advanced fieldwork practice (in a different setting from SOWK or SOWX 392).

Prerequisites: 126 300-level SOWK or SOWX points (including SOWK 392 or SOWX 392)

Restriction: SOWK 492

Limited to: BSW(Hons), BSW

Honours programme only:

***SOWX 408 Advanced Issues in Social Work Research***  
**20 points (full year)**

This course is designed for students accepted into the Honours programme. It considers in-depth research approaches to key issues within the field of social work.

Prerequisite: 126 300-level SOWK or SOWX points

Restrictions: SOWK 405, 406, 408, SOWX 405, 406

Limited to: MA, BSW(Hons)

### **SOWX 490 Dissertation**

#### **40 points (full year)**

Supervised individual research on a topic in social work

Prerequisite: 126 300-level SOWK or SOWX points

Restrictions: SOWK 590, SOWK 490

Limited to: MA, BSW(Hons)

Note: Non-BSW/BSW (Hons) students may be admitted to these papers with approval from the Head of Department of Sociology, Gender and Social Work.

### **PROGRAMME OF STUDY**

#### **Master of Social Work (MSW) degree**

The Department of Sociology, Gender and Social Work also offers an advanced professional programme leading to a Master of Social Work (MSW) degree and the Postgraduate Diploma in Social Welfare (PGDipSW). Entry is available to practitioners with existing social services B-level qualifications and proven competence in social services practice.

The MSW papers are not yet confirmed, but further information is available on the Departmental website.

Full details, application and entry processes, and a list of the papers available within the BSW/MSW programmes are available on the Department's website:

[www.otago.ac.nz/sgsw](http://www.otago.ac.nz/sgsw)

#### **Further information**

Administration Assistant

Department of Sociology, Gender and Social Work

University of Otago

PO Box 56, Dunedin 9054

Tel 03 479 7951

Fax 03 479 7653

Email [helen.osullivan@otago.ac.nz](mailto:helen.osullivan@otago.ac.nz)

Web [www.otago.ac.nz/sgsw](http://www.otago.ac.nz/sgsw)

## **THEOLOGY**

### **PROGRAMME OF STUDY**

#### **Bachelor of Theology (BTheol)**

A number of papers for the Bachelor of Theology degree are taught concurrently on campus in Dunedin and by a combination of audioconferences, teaching days, online work, or block courses. Students should plan their courses to fulfill the major subject requirements for a BTheol degree as outlined in the University Calendar and the course information booklet of the Department of Theology and Religion. BTheol papers may also be credited towards the Diploma for Graduates.

The following papers are available in the first semester:

#### **BIBX 112 Interpreting the Old Testament**

##### **18 points**

The interpretation of the Old Testament in its historical context, including an introduction to methods of study, the interpretation of the Pentateuch (Genesis to Deuteronomy) and the historical books (Joshua-2 Kings), and an in-depth discussion of selected texts.

#### **BIBX 131 Introductory Greek New Testament Language I**

##### **18 points**

A reading-based beginners' paper covering the basic elements of New Testament Greek grammar and vocabulary, designed to develop reading skills in New Testament Greek.

#### **BIBX 215 Special Topic: The Bible in Religious Education**

##### **18 points**

A study of key themes and sections of the Old and New Testaments, including background issues, and the use of the Bible in Religious Education.

Note: This paper is recommended for those teaching or planning to teach religious education programmes in schools. Contact the Department for details.

#### **BIBX 324 Special Topic: Early Christians in Ephesus**

##### **18 points**

A study of the life of the Early Christians in Ephesus from the time of Paul to Ignatius, against the background of our knowledge of the wider city of Ephesus.

#### **CHTX 102 The History of Christianity**

##### **18 points**

A survey of the history of Christianity from 100 AD to the present day: from early formation to recent contexts in Nazi Germany, Soviet Russia and North America.

#### **CHTX 111 Doing Theology**

##### **18 points**

What is theology? How do we do it and why? The roles of Scripture, tradition and experience; exploring doctrines of God, Creation and humankind in a pluralist world.

#### **HEBX 131 Introductory Biblical Hebrew**

##### **18 points**

A paper for beginners covering the basics of Biblical Hebrew grammar and vocabulary, to enable students to read the Hebrew Bible in the original.

#### **PASX 208/308 Special Topic: Ministry and Society in the 21st Century**

##### **18 points**

An exploration of issues in contemporary society affecting congregations and ministry organizations, and of the role of congregational leaders in leading people in the context of such issues.

#### **PASX 212 Research Methods**

##### **18 points**

Analysis of a variety of social research methods to be used in theological research and research relating to the practice of ministry.

The following papers are available in the second semester:

#### **BIBX 121 Interpreting the New Testament**

##### **18 points**

The interpretation of the New Testament in its historical context, including an introduction to critical methods and to the study of the Gospels and the Epistles, with an in-depth discussion of selected texts.

#### **BIBX 132 Introductory Greek NT Language & Exegesis II**

##### **18 points**

A continuation of BIBX 131, including the exegesis of passages from the Greek New Testament.

#### **BIBX 221/321 The Gospels**

##### **18 points**

A detailed introduction to the study of the Gospels, with exegesis of selected texts.

### ***BIBX 315 Approaches to Hermeneutics***

**18 points**

A study of approaches to Biblical Hermeneutics, including discussion of the historical development of hermeneutics, from early Christian and Jewish interpretation to contemporary questions of Biblical Hermeneutics. The study incorporates key hermeneutical approaches, concepts, issues and terms.

### ***CHTX 131 God and Ethics in the Modern World***

**18 points**

An introduction to Christian ethics in the modern world with particular attention to the major cultural shifts that have shaped contemporary thinking about God, ethics, religion and law.

### ***CHTX 231/331 Christianity, War and Violence***

**18 points**

A systematic examination of the foundations of ethics in Christian Scripture followed by an analysis of Christian conceptions of morality from various perspectives; an examination and analysis of particular ethical issues surrounding Christian involvement in and responses to war and violence.

### ***CHTX 305 The Roots of Public Theology***

**18 points**

Biblical and patristic roots of public theology; the contribution to public theology by thinkers and activists from the 16th-19th century.

### ***HEBX 132 Introductory Biblical Hebrew II***

**18 points**

A continuation of HEBX 131, including the exegesis of selected passages from the Hebrew Bible.

### ***PASX 311 Preaching and Communication***

**18 points**

An exploration of communication issues that affect congregations and ministry organisations today, including interpreting the Bible and preaching in an increasingly secular world, as well as digital and online communication.

### ***PASX 207/307 Special Topic: Introduction to Pastoral Care***

**18 points**

An introduction to the principles and practices of pastoral care, including consideration of the challenges of pastoral care in cross-cultural contexts.

The following are full year papers:

### ***BIBX 213/313 Hebrew Old Testament Exegesis 2***

**18 points**

Detailed study of Hebrew language and syntax, with weekly language exercises. The translation and exegesis of selected passages.

### ***BIBX 223/323 Greek New Testament Exegesis 2***

**18 points**

Issues in translation of New Testament Greek, including grammar and syntax, with reference to selected passages; translation and detailed exegesis of other Greek texts.

## **PROGRAMMES OF STUDY**

### ***Postgraduate Diploma in Ministry (PGDipMin)***

### ***Master of Ministry (MMin)***

These postgraduate programmes are for the professional development of those involved in Christian Ministry, enhancing understanding and practice. The programmes integrate theological learning with ongoing engagement in and study of the practice of Ministry. The Master of Ministry programme consists of six taught papers and a research project. The Postgraduate Diploma in Ministry consists of four taught papers.

The following papers are available in the first semester:

### ***BIBX 423 Special Topic: Early Christians in Ephesus***

**20 points**

A study of the life of the Early Christians in Ephesus from the time of Paul to Ignatius, against the background of our knowledge of the wider city of Ephesus.

### ***CHTX 402 Advanced Studies in Church History (In 2013: Ranters and Radicals)***

**20 points**

An in-depth historical investigation of religious ideas during the tumultuous years of the British civil wars and their aftermath in Oliver Cromwell's England.

### ***MINX 405 Special topic: Church and Change***

**20 points**

This paper is designed to help students analyse and reflect critically on the challenges confronted by the church in the diversity of contemporary cultures and some of the most popular adaptations by churches in response to these cultures.

The following papers are available in the second semester:

### ***BIBX 412 Approaches to Hermeneutics***

**20 points**

A study of approaches to Biblical Hermeneutics, including discussion of the historical development of hermeneutics, from early Christian and Jewish interpretation to contemporary questions of Biblical Hermeneutics. The study incorporates key hermeneutical approaches, concepts, issues and terms.

### ***CHTX 405 The Roots of Public Theology***

**20 points**

Biblical and patristic roots of public theology; the contribution to public theology by thinkers and activists from the 16th-19th century.

### ***MINX 407 Preaching and Communication***

**20 points**

An exploration of communication issues that affect congregations and ministry organisations today, including interpreting the Bible and preaching in an increasingly secular world, as well as digital and online communication.

## **Further information**

Departmental Administrator  
Department of Theology and Religion  
University of Otago  
PO Box 56, Dunedin 9054  
Tel 03 479 8901  
Fax 03 479 5158  
Email [theology@otago.ac.nz](mailto:theology@otago.ac.nz)



## Profile

### RACHAEL HOLLOWAY

Postgraduate Certificate in Health Sciences (Hazard Assessment and Management)

“The course co-ordinator was very supportive and the workshops were all well managed and relevant.”

“I went to Otago and completed a degree in Pharmacology and a MSc in Toxicology. I then worked as a research assistant in Melbourne for about six years. After the birth of our eldest child we decided to move back to Dunedin and I opted to move away from research. I started working part-time as an assistant compliance officer in the Department of Physiology at Otago, helping out with health and safety management, especially with the use of chemicals and the rules and regulations that come along with using genetically-modified organisms. I'm now working full-time as the department's compliance officer.

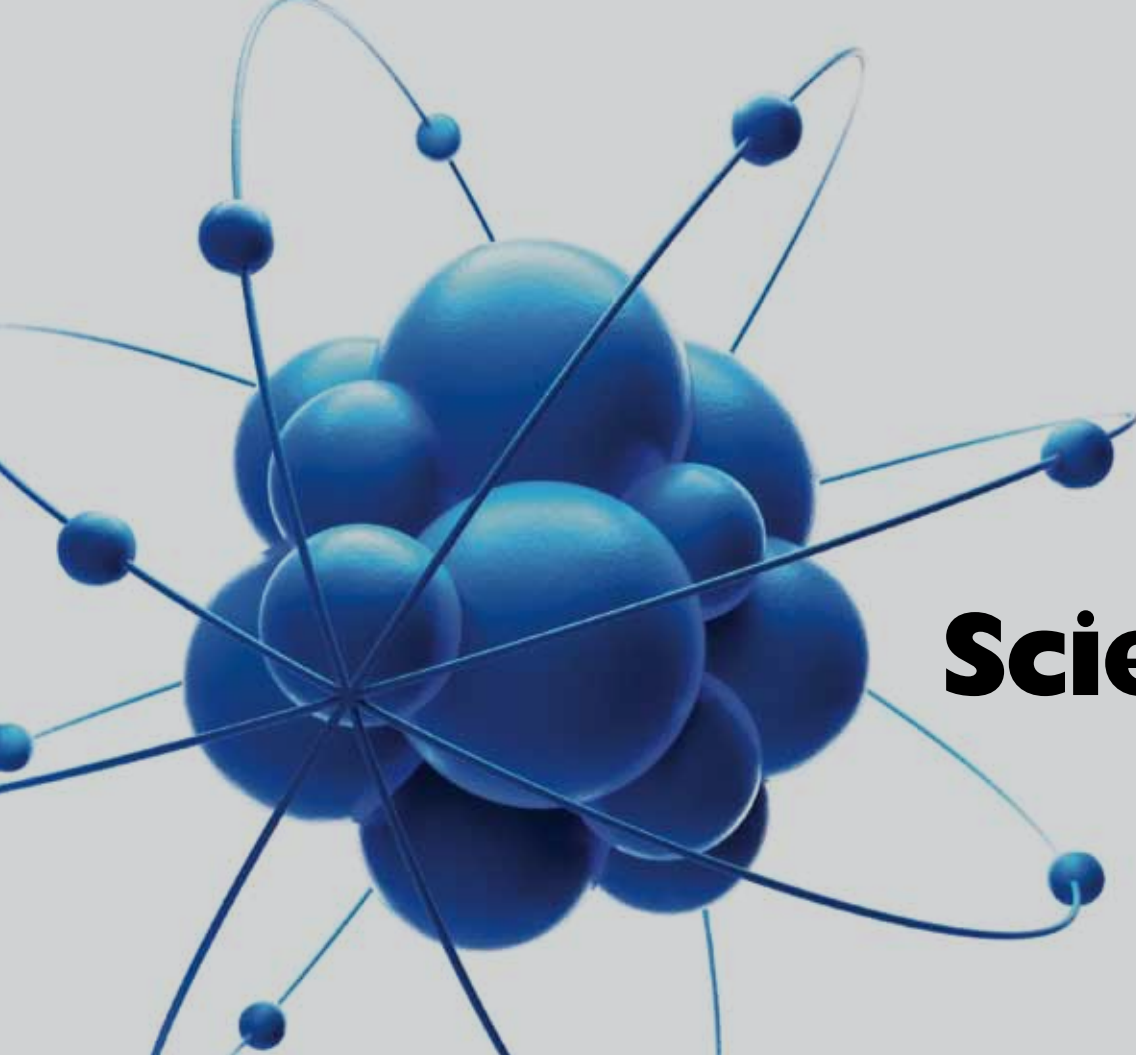
“I decided to do this qualification after I met other people from around the University doing similar jobs. Some of them had studied Hazard Assessment and Management papers and found them useful. Also, I'd been working in Australia where the rules around the use of genetically-modified organisms were different to New Zealand, so I thought it would give me a good background to local legislation and a refresher on aspects of chemical management, not just in New Zealand, but also globally.

“When I did the course I was working part-time and I completed one paper at a time (four papers in total). Distance learning meant I could study at night and, when my son had an afternoon nap, I could get a little bit of reading done – although when I had two children this became a bit harder!

“The course co-ordinator was very supportive and the workshops were all well managed and relevant. They also gave you a chance to meet others who were part of the course. For the Environmental Hazards paper we went to the Green Island Landfill – who had any idea how informative a trip to the rubbish dump could be!

“At the end of the day, keeping up the motivation to study was my major challenge. But the layout of the reading meant I could do half an hour and feel like I had achieved something. Doing the assignments like that doesn't work so well, but the motivation came from wanting to get it done before the kids got bigger and slept less!”





# Sciences

## SCIENCES

The University of Otago's first-class teaching and extensive research expertise is complemented by excellent field and laboratory facilities. There is a strong, leading-edge research culture in the physical, mathematical, environmental, biological and human sciences.

### INTRODUCTORY CHEMISTRY

Chemistry is a pivotal subject to almost all science-related studies, but not every student is sufficiently prepared to attempt first-year chemistry. The Department of Chemistry offers a distance-taught course in Introductory Chemistry, providing a firm foundation of the key chemical concepts for those students who consider their previous chemistry education to have been deficient. It is particularly valuable for mature students.

Enrolment for Introductory Chemistry is continuous throughout the year. Students may work at their own pace and most complete the course in about 100 hours (10 hours per week = 10 weeks).

Introductory Chemistry does not count for credit towards any University qualification.

#### Further information

Kiri Miller  
Department of Chemistry  
University of Otago  
PO Box 56, Dunedin 9054  
Tel 03 479 7908  
Fax 03 479 7906  
Email [kmiller@chemistry.otago.ac.nz](mailto:kmiller@chemistry.otago.ac.nz)  
Web <http://neon.otago.ac.nz/chemistry/studying/IntroChem/>

Dr David McMorran  
Course Co-ordinator  
Department of Chemistry  
University of Otago  
PO Box 56 Dunedin 9054  
Tel 03 479 7934  
Fax 03 479 7906  
Email: [davidm@chemistry.otago.ac.nz](mailto:davidm@chemistry.otago.ac.nz)

### CHEMICAL HAZARDS

An understanding of the risks associated with the use of chemicals in modern society, the assessment of these risks and how the risks can be managed and minimised are an important aspect of modern society. Chemical hazards impact on our health, environment and working practices.

HAZX 401 is a general introduction to chemical hazards. It may be taken by students with a limited chemistry background and working in areas such as OSH, regional councils, fire service etc.

#### *HAZX 401 Management of Chemical Hazards 20 points (first semester)*

Principles that guide the identification and practical treatment of chemical hazards.

Restrictions: CHEM 477, CHEX 477

## Further information

HAZX Administrator  
Department of Chemistry  
University of Otago  
PO Box 56, Dunedin 9054  
Tel 03 479 7912  
Fax 03 479 7906  
Email hazx401@chemistry.otago.ac.nz

## CLOTHING AND TEXTILE SCIENCES

The marketplace for clothing and textiles is undergoing major change due to the removal of trade barriers between countries and improved access to New Zealand for products from other sources. Such changes impose greater demands on buyers, sellers and retailers in terms of expertise and technical understanding of products and product components. Workplace safety has emerged as a critical area for protective clothing applications. There is also increasing pressure on teachers to develop appropriate curricula for the upper level of their school, particularly in sciences and technology. The social/ historical aspects of clothing and textiles are attracting greater interest. Distance-taught programmes of study in clothing and textile sciences support development of the expertise and technical understanding required to meet these needs.

### PROGRAMMES OF STUDY

***Postgraduate Diploma in Science (PGDipSci) in Clothing and Textile Sciences***

***Postgraduate Diploma in Applied Science (PGDipAppSc) in Clothing and Textile Sciences***

These programmes in Clothing and Textile Sciences cover up-to-the-minute information on clothing and textiles in New Zealand and overseas. They are valuable ways of extending knowledge and advancing qualifications for anyone interested in clothing and textiles in New Zealand, and are accredited internationally by The Textile Institute. Entry is open to people with a BSc or equivalent. Individual papers may be taken by students who do not have time to complete the full programme or do not wish to do so. A Diploma for Graduates is available both for graduates, and for non-graduates with a tertiary qualification and relevant experience, but no university degree.

Students who have completed either the postgraduate diploma or, in some instances, four of the required papers may, on application, be permitted to undertake a master's degree in Clothing and Textile Sciences (MSc or MAppSc).

The following papers are available:

- 🌐 ***CLTX 451 Physical Properties of Clothing and Textiles***  
**20 points (not offered 2013 – on campus only in 2013 as CLTE 451)**  
Interactions of clothing and materials with the human body. Selected topics including water/fabric relationships, leather, composites, textile modelling, stitch joining, conservation.
- 🌐 ***CLTX 452 Social Aspects of Clothing and Textiles***  
**20 points (not offered 2013 - on campus only in 2013 as CLTE 452)**  
Dress and society: identity, gender, culture and subculture. Dress in history: the Pacific, 19th century New Zealand and contemporary debates. (Suited to those interested in dress/textile conservation or dress in history.)

***CLTX 453 Research Methods***  
**20 points (not offered 2013 - on campus only in 2013 as CLTE 453)**

Evaluation and application of methods in clothing and materials research. (Suited to those with testing, research and compliance interests.)

- 🌐 ***CLTX 454 Clothing, Materials and Workplace Injury***  
**20 points (also offered on campus in 2013 as CLTE 454)**  
Materials and the design of clothing assemblies for reducing the severity and rate of workplace injury. International and national standards, legal requirements, New Zealand case studies. (Suited to health and safety professionals needing a sound understanding of the structure, function and performance of protective clothing.)

***CLTX 455 Topic in Advanced Clothing and Textile Sciences***  
**20 points (full year)**

Details of this paper are available from Professor Rachel Laing, Clothing and Textile Sciences.

- 🌐 ***CLTX 460 Co-operative Education Programme***  
**(restricted entry)**  
**20 points (full year)**

An industry-based project.

- 🌐 ***CLTX 480 Research Project***  
**40 points (full year)**

- 🌐 ***CLTX 490 Dissertation***  
**60 points (full year)**

- 🌐 ***CLTX 495 Master's Thesis Preparation***  
**40 points (full year)**

### Further information

Professor R M Laing  
Academic Co-ordinator  
Distance Courses in Clothing and Textile Sciences  
University of Otago  
PO Box 56, Dunedin 9054  
Tel 03 479 7540  
Fax 03 479 7538  
Email raechel.laing@otago.ac.nz

## SPORTS STUDIES

The programmes offered provide tertiary study for people who wish to undertake formal distance learning (either part-time or full-time) in sports and physical activity.

Note: Only students previously enrolled in these programmes are eligible for enrolment in 2013.

### PROGRAMMES OF STUDY

***Diploma in Sports Studies (DipSptSt)***

The Diploma in Sports Studies (DipSptSt) provides a basic grounding in general sports studies and can be undertaken by those entering the field or as a refresher course for teachers, coaches and sports administrators.

***Certificate in Fitness Management (CertFitMgt)***

The Certificate in Fitness Management (CertFitMgt) has vocational value for practitioners in the fitness industry.

Both the certificate and the diploma are recognised university qualifications. Those who enrol tend to come from three groups: (a) those with university qualifications; (b) those with non-university tertiary qualifications such as physiotherapy, nursing and sports science; and (c) those without any qualification, but with experience or interest in the sports or fitness industry.

Foundation studies papers (100-level) and advanced studies papers SPSX202, SPSX 205 and SPSX 212 for the Diploma in Sports Studies are no longer being offered. The following advanced studies papers (200-level) for the Diploma in Sports Studies are being offered in 2013 for the final time.

***SPSX 201\* Exercise Testing and Prescription***  
***18 points (second semester)***

Exercise programmes for different sports groups, practical skills in fitness management.

 ***SPSX 203 Sociology of Sport***  
***18 points (first semester)***

Issues related to gender, class, nationality and violence, nationally and internationally.

 ***SPSX 204\* Sports Injuries***  
***18 points (second semester)***

Biological and functional sequence of events following injuries in physical activity and sports settings.

\* Papers marked with an asterisk (together with the discontinued papers SPSX 101, 102, 104 and SPSX 202) constitute the Certificate in Fitness Management.

Please note: SPSX 201 includes a compulsory two-day residential school held in New Zealand.

**Further information**

Administrator for Distance Learning  
School of Physical Education  
University of Otago  
PO Box 56, Dunedin 9054  
Tel 64 3 479 7683  
Fax 64 3 479 8309  
Email [beverley.lawrence@otago.ac.nz](mailto:beverley.lawrence@otago.ac.nz)  
Web <http://physed.otago.ac.nz/distance/>

**SURVEYING**

The School of Surveying offers Introductory Surveying (SURX 101) through the distance learning programme.

Introductory Surveying is an appropriate introduction to surveying for polytechnic students, and for those employed in surveying, engineering or planning offices, staff of local authorities and construction contractors.

***SURX 101 Introductory Surveying***  
***18 points (semester two)***

The paper explores several surveying techniques, principles and procedures as well as providing an introduction to a varied range of survey applications, such as GPS, engineering and construction surveying.

Students need internet access for regular communication by email, and must attend a one-week field course (scheduled over the mid-semester break) which is held at the Dunedin campus.

**Further information**

Marg Newall  
School of Surveying  
University of Otago  
PO Box 56, Dunedin 9054  
Tel 03 479 7585  
Fax 03 479 7586  
Email [surveying@otago.ac.nz](mailto:surveying@otago.ac.nz)  
Web [www.surveying.otago.ac.nz/study/papers/SURX101.html](http://www.surveying.otago.ac.nz/study/papers/SURX101.html)



# Business

## BUSINESS

The School of Business (Division of Commerce) makes a strong contribution to the University of Otago's growing national and international reputation. It is an Asia-Pacific leader in education, research and development in business and economics.

### INFORMATION SCIENCE

Information science focuses on solving problems in the computer-based information systems which play a vital role in today's society. (See also the Health Informatics papers in the Health Sciences section).

The following paper is available in 2013:

#### *INFX 411 Machine Learning and Data Mining* 36 points (full year)

Principles and algorithms of machine learning techniques and their use in data mining; applications including business intelligence, software engineering and computer vision; new research trends. Development of an intelligent data mining system for real world applications.

#### Further information

Dr Brendon J Woodford  
Department of Information Science  
University of Otago  
PO Box 56, Dunedin 9054  
Tel 03 479 5432  
Fax 03 479 8311  
Email [bjwoodford@infoscience.otago.ac.nz](mailto:bjwoodford@infoscience.otago.ac.nz)  
Web [www.infosci.otago.ac.nz/info411/](http://www.infosci.otago.ac.nz/info411/)

### TOURISM

The Department of Tourism offers undergraduate and postgraduate programmes which provide an overview of the tourist industry, its impacts, management, marketing, resource development issues and entrepreneurship, both for graduates in

any discipline and for those who have experience in the industry.

The following papers are available:

#### *TOUX 101 Introduction to Tourism* 18 points (Summer School)



An introduction to the global principles that structure tourism, the nature and operation of the tourist industry and the impact, development and management issues that arise from tourism.

#### *TOUX 102 Global Tourism* 18 points (Summer School)



The major issues in world tourism as it is differentiated on a global regional basis; integrated illustrative case studies.

#### Further information

Tourism Secretary  
Department of Tourism  
University of Otago  
PO Box 56, Dunedin 9054  
Tel 03 479 8520  
Fax 03 479 9034  
Email [tourism@otago.ac.nz](mailto:tourism@otago.ac.nz)  
Web [www.otago.ac.nz/tourism/teaching](http://www.otago.ac.nz/tourism/teaching)

Distance Learning Coordinator  
Department of Tourism  
University of Otago  
PO Box 56, Dunedin 9054  
Tel 03 479 5403  
Email [tourism@otago.ac.nz](mailto:tourism@otago.ac.nz)



## Profile

### GENER DELOS SANTOS

Postgraduate Diploma in Occupational Medicine

“The modular training at Otago is very appealing.”

“I’m involved in helping to maintain and set up occupational medical support in various industrial sectors.

“When I started my studies at Otago I was working in several locations around the world: a precious metal mine in Mongolia; a mobile seismic exploration in Vietnam; an LNG tank construction project in a wintry part of China and a huge oil and gas installation in Africa. So my work involved intensive travelling interspersed occasionally with about two weeks of holidays. This was when I had to find the time to update my medical qualifications.

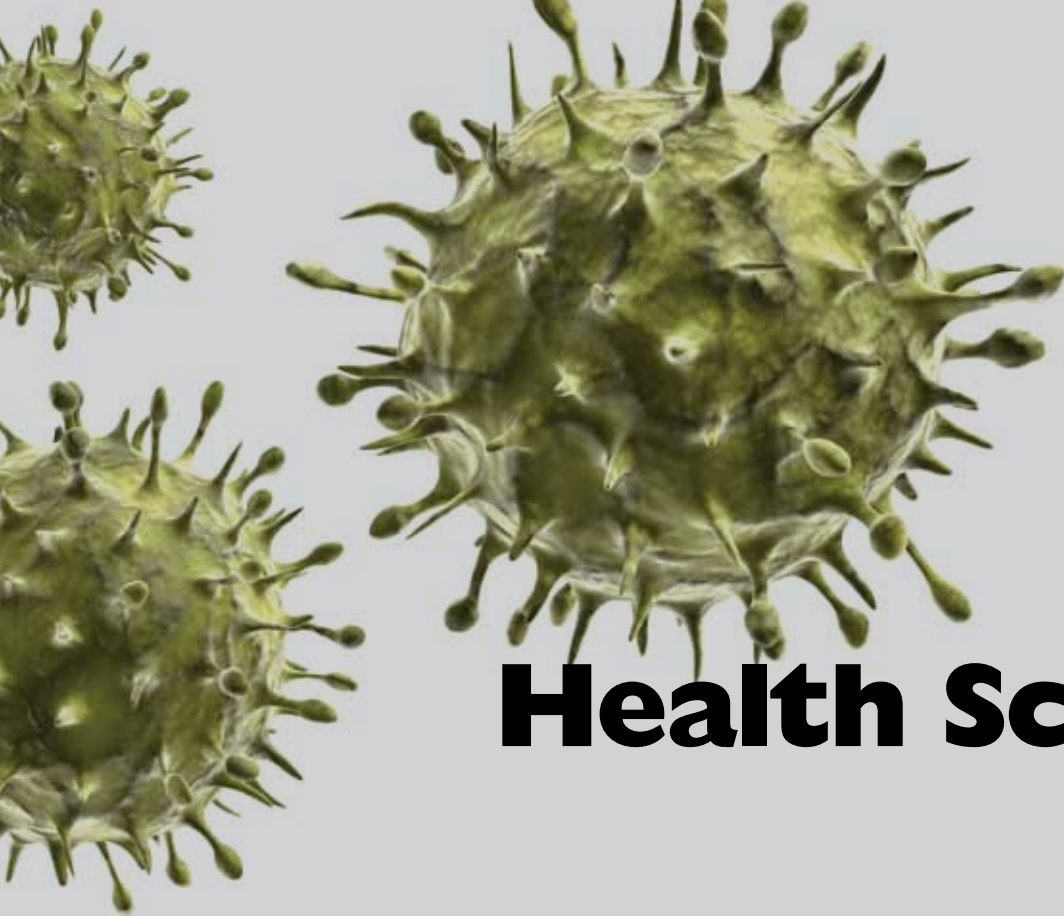
“The short holidays were good for short certification trainings, but the timeframe was virtually impossible for undertaking postgraduate diploma, let alone embarking on a master’s degree.

“At the time, I didn’t know anyone endeavouring to study while working in a similar situation. Eventually, through Otago, I came to meet doctor-students in different parts of the world who had similar challenges that Otago was able to help them meet.

“The modular training at Otago is very appealing. With good time management, I’m usually able to keep up with the readings and, through good logistics planning, I’m able to attend audioconferences, submit homework on schedule and have even been able to attend the annual residential school in New Zealand.

“I find the occupational medicine modules very thorough and appropriate for my line of work. The facilitators are more than willing to assist with my queries as well as very helpful and understanding about the many times I encountered hurdles in my studies – like when I was stationed at a site with no internet and only intermittent electricity supply.

“I completed the modules for a Postgraduate Diploma in Occupational Medicine, but after meeting my peers in the annual residential school I’d like to work towards a certificate, diploma or even a master’s degree in Aviation Medicine and Aeromedical Retrieval. I plan to tackle this once I firm up a membership in the Faculty of Occupational Medicine in the UK.”



# Health Sciences

## HEALTH SCIENCES

The Division of Health Sciences is a leading provider of research-based academic and professional courses of international standing. Providing education for over 4,000 undergraduate and 1,800 postgraduate students, the division offers a wide-range of qualifications with a strong involvement in the continuing education of health professionals.

### ADDICTION AND COEXISTING DISORDERS

The National Addiction Centre (NAC) develops, evaluates and promotes effective treatments for people with alcohol- and drug-related problems in Aotearoa New Zealand. Located in the Department of Psychological Medicine, University of Otago, Christchurch, the NAC provides clinically based postgraduate study for multidisciplinary students who are primarily working clinically in the addiction, mental health and related fields.

#### PROGRAMMES OF STUDY

***Postgraduate Certificate in Health Sciences (PGCertHealSc) endorsed in Addiction and Coexisting Disorders***  
PSMX 404 plus one of PSMX 416, 422 or 424.

***Postgraduate Diploma in Health Sciences (PGDipHealSc) endorsed in Addiction and Coexisting Disorders***  
PSMX 404 plus two of PSMX 416, 422 or 424 plus one other approved paper.

***Master of Health Sciences (MHealSc)***  
Postgraduate diploma plus either a thesis or two further approved papers and a dissertation.

***PhD***  
The department can supervise a limited number of PhD students interested in research in this field.

The following papers are available:

***PSMX 404 Assessment of Addiction and Coexisting Disorders 30 points (first semester)***

Develops clinical skills in assessment and treatment for people with moderate to severe alcohol and drug dependence, including coexisting substance use and mental health problems. Involves two three-day block courses in Christchurch running from Thursday to Saturday, a series of audioconferences and self directed learning during the semester.

***PSMX 416 Applied Theory of Addiction and Coexisting Disorders 30 points (second semester)***

A clinically-oriented, theoretical overview of addiction and coexisting disorders. Suitable for anyone working in the addiction and broader mental health fields, including those with a policy focus.

***PSMX 422 Treatment of Addiction and Coexisting Disorders 30 points (second semester)***

Focuses on interventions for people with alcohol and drug and coexisting mental health problems. Includes two three-day block courses in Christchurch, four audioconferences, an online group and self-directed case-based learning.

### **PSMX 424 Pharmacotherapy of Addiction and Coexisting Disorders**

#### **30 points (first semester)**

Use of medications in treating addicted people including coexisting medical and psychiatric disorders. Runs as a combination of two two-day workshops in Nelson and an email discussion group, focused on 10 clinical cases.

Students taking any of PSMX 404, 422, 424 must have worked clinically for at least two years and, at the time of study, must be working clinically in a therapeutic setting.

Enrolments must be made through the Department of Psychological Medicine, University of Otago, Christchurch.

#### **Further information**

Judith Stone

Departmental/Postgraduate Administrator

Department of Psychological Medicine

University of Otago, Christchurch

PO Box 4345, Christchurch 8140

Tel 03 372 0404

Fax 03 372 0407

Email [judith.stone@otago.ac.nz](mailto:judith.stone@otago.ac.nz)

### **AVIATION MEDICINE**

See entry under Occupational and Aviation Medicine.

### **BIOETHICS**

Ethical issues in the practice of medicine and related professions and in health-care research are of topical and practical concern both to practitioners and the general public. Six papers, BITX 401, BITX 403, BITX 404, BITX 405, BITX 406 and BITX 407, are offered through the distance learning programme and may be credited towards postgraduate qualifications including Masters' degrees and Postgraduate Diplomas in Health Sciences and Bioethics and Health Law. They may also be taken for Certificate of Proficiency (i.e. without necessarily being counted towards a particular qualification) or for the Diploma for Graduates.

#### **BITX 401 Theories of Biomedical Ethics**

##### **30 points (first semester)**

This paper covers key concepts in ethics such as autonomy, dignity, justice and duty. The paper is intended to elucidate the character of moral debate with respect to the health and well-being of people. There is one residential weekend held in Dunedin.

Admission requires approval from the Director of the Bioethics Centre.

#### **BITX 403 Issues in Law, Ethics and Medicine**

##### **15 points (first semester)**

Through staff- and student-led seminars, current issues in bioethics and medical law are explored with reference to theories about actual and desirable relationships of law, morals, and the biomedical sciences. There is one residential weekend held in Dunedin.

Prerequisites or corequisites: BITX 401 and LAWS 447 or LAWS 448, or approval from the Director of the Bioethics Centre.

#### **BITX 404 Ethics and Health Care**

##### **30 points (second semester)**

Explores the ethical dimensions of a number of major areas and themes of contention in health-care provision including: beginning and end of life issues, resource allocation, genetics, new and emerging technologies, mental health issues, and boundaries of medicine.

Prerequisite: BITX 401, or approval from the Director of the Bioethics Centre.

#### **BITX 405 Bioethics in Clinical Practice**

##### **30 points (second semester)**

Focuses on ethical issues arising at the heart of clinical practice. Case studies will be used to explore the complexities and tensions inherent even in apparently straightforward practices such as obtaining consent, holding confidences, maintaining professional boundaries and managing multiple roles. There is one residential weekend held in Dunedin.

Admission requires approval from the Director of the Bioethics Centre.

#### **BITX 406 Health Research Ethics**

##### **15 points (first semester)**

Introduces the basic ethical aspects of health research on humans. It considers ethical questions arising in research from conception, design and conduct, right through to dissemination of research results; the role and challenges of ethical review of research; Māori in research; and research in vulnerable populations.

Admission requires approval from the Director of the Bioethics Centre.

#### **BITX 407 Advanced Health Research Ethics**

##### **15 points (second semester)**

Explores the more complex and controversial areas of research theory and practice including: the use of deception, research involving animals, longitudinal research, healthy volunteer research studies, genetic research.

Prerequisite or corequisite: BITX 406, or approval from the Director of the Bioethics Centre.

#### **Further information**

Vicki Lang

Bioethics Centre

University of Otago

PO Box 56, Dunedin 9054

Tel 03 471 6120

Fax 03 471 6121

Email [bioethics@otago.ac.nz](mailto:bioethics@otago.ac.nz)

Web <http://healthsci.otago.ac.nz/bioethics/>

### **CHILD HEALTH**

The Postgraduate Diploma in Child Health (DCH) programme is a valuable learning opportunity for health professionals who provide child health services.

#### **PROGRAMME OF STUDY**

##### **Postgraduate Diploma in Child Health (DCH)**

The Postgraduate Diploma in Child Health (DCH) is suitable for resident medical officers doing a six-month paediatric attachment. Other health professionals, including GPs, child health nurses, physiotherapists and occupational therapists, who wish to improve their knowledge of community child health, may be eligible to enrol for CHHX 701 on its own.

The following two papers are required for the diploma:

##### **CHHX 701 Community Child Health**

###### **30 points (each semester)**

This paper covers community aspects of child health and child health services. Topics covered include: epidemiology of childhood disease, nutrition, adolescent health, immunisation, health of Māori children and dental issues in paediatrics. The paper is based on recommended readings and 16 one-hour audioconference sessions. Candidates are expected to take

part in community visits to gain an understanding of facilities catering to the health needs of children outside hospitals. This paper complements the clinical component of the Postgraduate Diploma in Child Health which is taught in a hospital setting where candidates hold positions as junior paediatric medical staff.

#### Further information

Amanda Phillips  
Distance Learning Co-ordinator  
Dunedin School of Medicine  
PO Box 913, Dunedin 9054  
Tel 03 474 7825  
Fax 03 474 7817  
Email wch.distancelearning@otago.ac.nz

#### **CHHX 702 Clinical Attachment in Paediatrics** **90 points (each semester)**

Develops clinical knowledge, skills and attitudes concerning paediatrics and child health. Covers neonatal paediatrics and general paediatrics in inpatient and outpatient settings. Explores managing chronic childhood problems including developmental difficulties, as well as acute problems.

Except under unusual circumstances, candidates will be employed in an approved hospital as a paediatric SHO or higher for a minimum of six months during the time they are studying for CHHX 702. Students may also enrol for CHHX 702 on its own without studying for the Postgraduate Diploma in Child Health. The paper involves about 20 formal tutorials in the candidate's own centre, as well as 27 PowerPoint audioconferences and teaching via the internet/telepaediatrics. All candidates must already have access to internet/email facilities and access to a personal computer with a CD-ROM drive, webcam, headphones, microphone and PowerPoint installed.

#### Further information

Nancy McIndoe  
Departmental Manager  
Department of Paediatrics and Child Health  
University of Otago, Wellington  
PO Box 7343, Wellington 6242  
Tel 04 385 5999  
Fax 04 385 5898  
Email paediatrics.uow@otago.ac.nz

### CONTINENCE MANAGEMENT

A two-paper postgraduate certificate is offered to provide nurses and physiotherapists with the skills to independently assess and manage patients with urinary and faecal incontinence.

#### PROGRAMME OF STUDY

#### **Postgraduate Certificate in Health Sciences (PGCertHealSc)** **endorsed in Continence Management**

This qualification comprises the following papers:

#### **CTMX 401 Pathophysiology of Incontinence** **30 points (not offered 2013, next offered 2014)**

Epidemiology, anatomical and physiological concepts of urine and faecal continence and incontinence. Diagnostic tests.

#### **CTMX 402 Management for Continence** **30 points (not offered 2013, next offered 2014)**

Conservative and surgical treatments available, their rationale and efficacy. Establishing a continence clinic; the principles of assessing results.

These papers are taught mainly in on-campus blocks in Christchurch.

#### Further information

Ruth Helms  
Manager, Academic Programmes  
University of Otago, Christchurch  
PO Box 4345, Christchurch 8140  
Tel 03 364 0527  
Email ruth.helms@otago.ac.nz

### FAMILY AND SYSTEMS THERAPIES

#### PROGRAMME OF STUDY

Systemic analysis and therapies have become widely accepted internationally in the fields of mental health, counselling, education and organisational changes. This approach is also gaining currency in the field of medical general practice.

#### **Postgraduate Certificate in Health Sciences (PGCertHealSc)** **endorsed in Family and Systems Therapies**

This two-paper certificate has been established to provide training to appropriately qualified professionals.

#### **PSMX 436 Principles of Family and Systems Theory** **30 points (second semester)**

This paper is primarily a theoretical paper exploring the major models of family therapy theory and practice from an integrative perspective through analysis and critique. It includes some skill-based sessions and an expectation of some fieldwork. The paper will be taught in two block courses in the second semester.

#### **PSMX 437 Applied Systems Theory** **30 points (first semester)**

This is a practice and skills-oriented paper, focusing upon the development of conceptual, assessment and interventive skills with families and other systems. As such it requires a considerable amount of supervised fieldwork. The paper will be taught in three block courses in the first semester.

Both papers will be taught in block format from Wellington campus.

#### Further information

Julie Burgess-Manning  
Clinical Lecturer  
Email julie.burgess-manning@otago.ac.nz

Maria Fitzmaurice  
Course Administrator  
Department of Psychological Medicine  
University of Otago, Wellington  
PO Box 7343, Wellington 6242  
Tel 04 385 5541 extn 6511  
Fax 04 385 5877  
Email maria.fitzmaurice@otago.ac.nz

### FORENSIC PSYCHIATRY

Principles and practice of forensic psychiatry.

#### PROGRAMME OF STUDY

#### **Postgraduate Certificate in Health Sciences (PGCertHealSc)** **endorsed in Forensic Mental Health**

The paper PSMX 407 Forensic Psychiatry can be taken as part of a Postgraduate Certificate in Health Sciences (PGCertHealSc) endorsed in Forensic Mental Health in conjunction with PSMX 401 Nature, Extent and Assessment of Mental Disorders, or NURX 403 Mental Health Nursing Practice. The paper can also be taken as part of a 120-point Postgraduate Diploma in Health Sciences (PGDipHealSc) endorsed in Mental Health.



The following papers are available:

***PSMX 407 Forensic Psychiatry***  
**30 points (second semester)**

Examines key aspects of forensic mental health and how new information impacts on clinical practice. Components of forensic mental health include legislation as it applies to the mentally ill (both criminal and civil), the history and operation of forensic psychiatric services within New Zealand, impulsivity, aggression and personality disorder, conduct disorder, the association between mental disorder and violence, substance abuse and offending, and psychiatric care in secure facilities.

Applicants are expected to be working in the mental health area in New Zealand.

This paper is taught by four two-day block courses in Christchurch. Students are required to attend all four block courses.

***PSMX 401 Nature, Extent and Assessment of Mental Disorders***  
**30 points (first semester)**

Examines the key features of psychiatric disorders, their epidemiology, aetiology and an introduction to their treatment. It also provides an understanding of the history of current classification systems used in psychiatric practice. The paper develops an awareness of professional, ethical, cultural and research frameworks related to psychiatric disorders and an ability to critically evaluate.

This paper is taught by four two-day block courses in Christchurch. Students are required to attend all four block courses.

**Further information**

Judith Stone  
Departmental/Postgraduate Administrator  
Department of Psychological Medicine  
University of Otago, Christchurch  
PO Box 4345, Christchurch 8140  
Tel 03 372 0404  
Fax 03 372 0407  
Email [judith.stone@otago.ac.nz](mailto:judith.stone@otago.ac.nz)

**GENERAL PRACTICE**

**QUALIFICATIONS AVAILABLE**

***Master of General Practice (MGP)***

***Postgraduate Certificate and Diploma in General Practice (PGCertGP and PGDipGP)***

***Postgraduate Certificate and Diploma in Rural and Provincial Hospital Practice (PGCertRPHP and PGDipRPHP)***

***Postgraduate Certificate in Clinician-Performed Ultrasound (PGCertCPU)***

**PROGRAMME OF STUDY**

***Master of General Practice (MGP)***

The Master of General Practice (MGP) degree is for general practitioners who wish to extend their postgraduate study. Students will have satisfactorily completed the Postgraduate Diploma in General Practice, including the research paper GENX 821 Research Methods. The degree involves the completion of either a research thesis or approved papers and a dissertation.

**PROGRAMMES OF STUDY**

***Postgraduate Certificate and Diploma in General Practice (PGCertGP and PGDipGP)***

The core content of these qualifications is either New Zealand Primary Health Care (PRHX 701) or Nature of Medical Practice (GENX 820), plus additional approved papers to a total value of 60 points for the postgraduate certificate or 120 points for the postgraduate diploma.

The programme of study includes audioconferences and residential workshops; one paper is taken each semester or each year on a part-time basis, usually over two to three years. When the required papers are completed and a Postgraduate Diploma in General Practice awarded, students may complete a master's degree with either a research thesis or an approved paper and dissertation.

Papers are taught from either the Dunedin or Wellington campus. Each paper states the campus from which it is taught. In summary: GENX 702 – 715, and GENX 719 – 720; GENX 731 – 735; plus HASX 417 and PHRX 701 – 702 are taught from Wellington. GENX 717 – 718 and GENX 724 – 730; plus GENX 820 – 828 are taught from Dunedin

The distance papers taught from Wellington in this section are also available for qualifications in Primary Health Care and are open to health professionals mainly working in the primary sector. The papers taught from Dunedin are open to medical practitioners, and to non-medically qualified applicants on a case-by-case basis. All papers are distance taught and qualifications may be taken on a part-time basis.

The following papers are available:

*Either*

***GENX 820 Nature of Medical Practice (core paper)***  
**30 points (full year)**

This paper is a systematic review of the foundational concepts of medical practice, and it aims to examine the academic and philosophic underpinning of this. There are three face-to-face weekend residential periods over the course of the year and eight modules of study. These explain important issues about what it means to be a doctor. Topics include the history and culture of modern medicine, the doctor-patient relationship, consultation studies, the self of the doctor and the world of the patient and the place of general practice in health care delivery. Common outcomes of doing this paper are:

- A renewed sense of purpose in medicine
- Greater comprehension of the strengths and limitations of modern clinical method
- Fewer heartsink or “difficult” patients
- An ability to contribute critically to medicopolitical discussions
- Better understanding of one's own career choices; and
- A great sense of collegiality with others.

This paper is one of the prerequisite papers for the diploma. Taught from Dunedin. There are three residential workshops.

*And/or*

***PRHX 701 First and Foremost – Primary Health Care (core paper)***  
**30 points (first semester)**

This paper explores how to anticipate, plan for and evaluate changes to the delivery of primary health care in New Zealand today. Taking a population-based approach, interdisciplinary and multi-agency collaboration, as well as the interdependence of the generalist and specialist roles in the context of health care delivery are discussed. There are two residential periods in Wellington.

**GENX 702 Sexual and Reproductive Health**  
**30 points (second semester)**

This paper is relevant for anyone working in the field of sexual and reproductive health in any primary-care setting including general practice, school, student health and family planning clinics. It is especially suitable for GPs, practice nurses, other primary care nurses, pharmacists. It introduces and builds on the principles of sexual and reproductive health, including population health at national and international levels, and concepts about safe and effective provision of care. It gives practical advice about diagnosis, management and monitoring in a primary care setting. It assumes clinical experience working as a health professional, and builds on that experience with a strong interdisciplinary focus. There are two residential periods in Wellington.

**GENX 704 Te Tūhauora Māori Health**  
**30 points (not offered 2013, expected to be offered second semester 2014)**

This introductory paper is offered to those working in any area of primary health care. It covers a range of topics, including the historical, social and political contexts of Māori health, the Treaty of Waitangi, Māori health status and priorities, frameworks for assessment and intervention, health initiatives, and models for care delivery. There are two residential periods in Wellington.

**GENX 709 Long-term Condition Management**  
**30 points (first semester)**

Principles of ongoing, culturally appropriate long-term condition management, including implementing change in clinical practice and ways of delivering care, complexity in long-term condition management, best use of clinical information systems, patient self-management approaches, integrated care across the sectors, and population-based approaches. There are two residential periods in Wellington.

**GENX 710 Mental Health and Illness in Primary Care**  
**30 points (second semester)**

The paper is especially suitable for health professionals working in primary health-care settings where interdisciplinary practice is the norm. Mental health issues are an intrinsic component of primary health care delivery and are increasingly managed in community settings. This interdisciplinary paper is intended to give primary health-care professionals a sound basis for the recognition and management of mental health issues that commonly present in primary health-care settings. It provides a basis for evaluation, care planning and delivery for patients with mental health issues. It reviews current mental health status data and policy directions for primary care-based service delivery and workforce development. There are two residential periods in Wellington.

**GENX 711 Long-term Condition Management (Advanced)**  
**30 points (not offered 2013, expected to be offered second semester 2014)**

Principles of ongoing, culturally appropriate long-term condition management, including an understanding of complexity, patient self-management, integrated care between primary, secondary and community non-governmental services, interpersonal skills, population-based approaches, and effective change management. There are two residential periods in Wellington.

Prerequisite: GENX 709

**GENX 713 Travel Medicine 1: Introductory Concepts (subject to approval)**

**30 points (first semester)**

This paper provides an overview of travel medicine as a specialty area of practice, will cover the principles of preparing the intending traveller with a focus on prevention, and a detailed knowledge of vaccine preventable illness and travel vaccines. Students will be informed of relevant resources available for keeping up to date in this field of increasing publications relevant to clinical practice. There are two residential periods in Wellington.

**GENX 714 Travel Medicine 2: Applied Concepts (subject to approval)**

**30 points (second semester)**

This paper will cover the specific clinical concerns of travellers with special needs, including returning travelers, the humanitarian worker, pregnant women, the elderly, visiting friends and relatives, children, long-term expatriates, the immune-compromised traveller, the humanitarian and aid worker, and the adventure traveller. Specific clinical contexts to be covered include fitness to fly/aviation medicine, food and water-borne disease, preventing food and water-borne disease, preventing insect-borne disease, sexually transmitted infections and the traveler, travel dermatology, tuberculosis and travel, and the unwell returning traveller or recent migrant. There are two residential periods in Wellington.

**GENX 719 Tropical Infectious Diseases**

**30 points (first semester)**

This paper is designed to provide suitably qualified health professionals with theoretical and practical knowledge sufficient to manage tropical diseases. The paper is of interest to any health professional whose practice brings them into contact with travellers, migrants, or those who plan to work in tropical countries. Topics include relevant tropical diseases (arboviruses, malaria, helminthic infections, tuberculosis, HIV); their epidemiology, presentation, diagnosis, treatment and management both in developing countries and in New Zealand. There are two residential periods in Wellington.

**GENX 720 Refugee and Migrant Health**

**30 points (second semester)**

This paper is designed to provide health professionals with the theoretical and practical knowledge necessary to manage the health needs of, refugee and migrant groups. It also covers the needs of and challenges facing, those working in aid projects. The principles of competent cross-cultural practice will be covered. Working with interpreters and with groups for whom English is a second language forms an essential part of the course. There are two residential periods in Wellington.

**GENX 731 Supporting Healthier Lifestyles: Core Principles**  
**15 points (first semester)**

This paper utilises evidence based strategies and introduces a patient-focused, self-efficacy approach to support patients to achieve changes in lifestyle behaviours. There is one residential period in Wellington.

**GENX 732 Sleep Management - Supporting Healthier Lifestyles**

**15 points (not offered 2013, expected to be offered second semester 2014)**

This paper addresses sleep disorders commonly associated with health risk factors and illnesses focusing on guidelines for primary/integrated care health-care setting. There is one residential period in Wellington.

**GENX 733 Tackling Obesity – Supporting Healthier Lifestyles**  
**15 points (first semester)**

This paper explores evidence based strategies and interventions designed to address overweight and obesity. It overviews effective primary-care management approaches to support patients to achieve health loss through healthier lifestyle behaviours. There is one residential period in Wellington.

**GENX 734 Addiction and Drug Abuse – Supporting Healthier Lifestyles**

**15 points (second semester)**

This paper addresses the support required in primary/integrated care health-care settings to implement evidence-based strategies for managing alcohol, tobacco and other substance or behavioral addiction. There is one residential period in Wellington.

**GENX 735 Challenging Conversations - Supporting Healthier Lifestyles**

**15 points (second semester)**

This paper explores the interactional strategies used by patients and health professionals to manage conversations about lifestyle behaviours / lifestyle behaviour change in the primary care setting. There is one residential period in Wellington.

**PRHX 702 Expedition and Wilderness Medicine**  
**30 points (not offered 2013, expected to be offered second semester 2014)**

This paper is designed to provide participants with an understanding of planning and preparation for activities in the wilderness environment, both within New Zealand and overseas, and medical problems associated with the wilderness environment and the special considerations of providing medical care in an outdoor environment including risk assessment and resource management. There are two residential periods in Wellington.

**HASX 417 Health Sciences Research Methods**  
**30 points (full year)**

This paper provides an introduction to quantitative and qualitative research methods used in the health sciences. Critical appraisal and literature review skills are an integral part of the course. On completion of the course, students will be able to design and create a Master's-level research project under supervision. There are three on-campus block courses in Wellington during the paper.

The following papers, GENX 724 – 730, are taught from Dunedin and are also taken for Rural and Provincial Hospital Practice qualifications. Contact the Rural Postgraduate Administrator regarding these papers. Contact details on next page.

**GENX 724 The Context of Rural Hospital Medicine**  
**15 points (not offered 2013, next offered first semester 2014)**

The context of clinical care in rural hospitals in relation to the person and profession of the doctor, the hospital and the community.

**GENX 725 Communication in Rural Hospital Medicine**  
**15 points (not offered 2013, next offered first semester 2014)**

Clinical skills, knowledge and values required in the rural hospital setting for psychiatry, palliative care and communication with patients in New Zealand's bicultural and multicultural society.

**GENX 726 Obstetrics and Paediatrics in Rural Hospitals**  
**15 points (not offered 2013, next offered second semester 2014)**

The management of paediatrics, neonatal care, and obstetric and gynaecological emergencies in a rural hospital setting.

**GENX 727 Surgical Specialties in Rural Hospitals**  
**15 points (not offered 2013, next offered second semester 2014)**

The management of common surgical problems appropriate to be managed in a rural hospital setting. Includes general surgery, urology, vascular surgery, ophthalmology and ENT.

**GENX 728 Cardiorespiratory Medicine in Rural Hospitals**  
**15 points (second semester)**

The management of cardiology and respiratory problems in a rural hospital setting. Includes acute coronary syndromes, arrhythmias, valvular heart problems, airways obstruction and respiratory infections.

Restriction: GENX 721

**GENX 729 Medical Specialties in Rural Hospitals**  
**15 points (first semester)**

The management of acute and chronic common medical problems in a rural hospital setting. Includes gastroenterology, endocrinology, neurology, oncology, rheumatology, rehabilitation medicine and infectious diseases.

Restriction: GENX 721

**GENX 730 Trauma and Emergencies in Rural Hospitals**  
**15 points (second semester)**

The management of common medical and surgical emergencies in a rural hospital setting. Also covers immediate, intermediate and continuing care of the injured patient.

Restriction: GENX 722

The following 800-level papers GENX 821 – 828 are taught from Dunedin:

**GENX 821 Research Methods**  
**30 points (not offered 2013, expected to be offered in 2015)**

This paper introduces the basic principles and methods of critical appraisal and research design. It provides the participant with the skills to undertake and contribute to medical research through detailed coverage of research methods and design, data collection and analysis, research reporting and research ethics. This paper is a prerequisite for proceeding to a Master of General Practice degree. Taught from Dunedin.

**GENX 822 Advanced Nature of General Practice**  
**15 points (second semester)**

This is a paper for those who like to be challenged. It involves in-depth development of patient-centred medicine, leading to the consideration of what constitutes quality in general practice. Modules include uncertainty of error, "heartsink" or "difficult" patients, terminal care, the doctor-patient relationship and quality in practice. A pass in GENX 820 is a prerequisite for this paper. There are two residential workshops. Taught from Dunedin.

**GENX 823 Teaching and Learning in Medical Practice**  
**30 points (not offered 2013, expected to be offered 2014)**

This paper is based on key aspects of educational theory and provides practical outcomes for doctors wishing better educational relationships with undergraduate students, registrars, other doctors, and patients. It examines learning theory, provides opportunities for experiential and group learning, and explores the nature of reflective teaching practice.

Areas considered include:

- The process of change
- Course design and evaluation
- Teaching methods
- The assessment of learning

The learning contexts include medical education, medical practice and continuing professional development. A balance is provided between core material and the opportunity to develop individual areas of interest and application. There are three residential workshops. Taught from Dunedin.

***GENX 824 Ethics in General Practice***  
***15 points (second semester)***

This paper looks at ethical issues inherent in modern medicine and explores ways of thinking about them and of dealing with them. The particular focus lies on the ethical challenges that are relevant to general practice, which include informed consent, confidentiality, patient autonomy, rights, duties, rationing of health-care resources, the ethics of genetic testing and end-of-life dilemmas. With participants bringing their own unique perspective and case-based experience, this paper provides a platform for open discussion, exchange of ideas and self-reflection. Two residential workshops allow in-depth immersion in the subject matter and the formation of an invaluable collegial study environment. Taught from Dunedin.

***GENX 825 Culture, Health and Society***  
***15 points (first semester)***

This paper develops an understanding of the cultural and societal contexts within which medicine is practised. It is specifically designed to be useful for health professionals working in clinical settings – providing a general introduction to the discipline of medical anthropology, theorising around concepts and experiences of culture, embodiment, health and illness. Medicine and other healing modalities are explored, with attention to their cultural contexts and the meanings that illness experiences have for those within these cultural contexts. There are two residential workshops. Taught from Dunedin.

**Further information**

Anita Fogarty (800-level papers)  
Postgraduate Administrator  
Department of General Practice and Rural Health  
Dunedin School of Medicine  
University of Otago  
PO Box 913, Dunedin 9054  
Tel 03 479 7424 or 021 2797 424  
Fax 03 479 7431  
Email [anita.fogarty@otago.ac.nz](mailto:anita.fogarty@otago.ac.nz)

or

Postgraduate Co-ordinator (Wellington papers)  
Department of Primary Health Care and General Practice  
University of Otago, Wellington  
PO Box 7343, Wellington 6242  
Tel 04 385 5995  
Email [primarycare.distance@otago.ac.nz](mailto:primarycare.distance@otago.ac.nz)  
Web [www.otago.ac.nz/studyprimaryhealthcare](http://www.otago.ac.nz/studyprimaryhealthcare)

or

Raelene Abernethy (Rural Medicine papers: GENX 724–730)  
Contact details below.

**PROGRAMMES OF STUDY**

***Postgraduate Certificate and Diploma in Rural and Provincial Hospital Practice (PGCertRPHP and PGDipRPHP)***

The certificate and diploma are for generalist doctors who work in rural or small provincial hospitals within New Zealand. They provide rural hospital generalists (GPs, medical officers, RHM registrars) an opportunity to undertake further tertiary study without living in a metropolitan centre. The diploma forms part of the rural hospital medicine (RHM)

registrar training programme, but many of the participants are experienced rural hospital generalists. The diploma counts towards MOP's reaccreditation points and can be completed in two years part-time, though many choose to complete it over a longer period. The certificate requires 60 points, GENX 724 plus any other three papers selected from the core papers (GENX 724-30). The diploma requires a total of 120 points, GENX 724 and at least four other papers from the core papers in the schedule, plus further approved papers (up to 45 points).

The content of the following papers is described earlier.

***GENX 724 The Context of Rural Hospital Medicine***  
***15 points (not offered 2013, next offered first semester 2014)***

***GENX 725 Communication in Rural Hospital Medicine***  
***15 points (not offered 2013, next offered first semester 2014)***

***GENX 726 Obstetrics and Paediatrics in Rural Hospitals***  
***15 points (not offered 2013, next offered second semester 2014)***

***GENX 727 Surgical Specialties in Rural Hospitals***  
***15 points (second semester)***

***GENX 728 Cardiorespiratory Medicine in Rural Hospitals***  
***15 points (second semester)***

Restriction: GENX 721

***GENX 729 Medical Specialties in Rural Hospitals***  
***15 points (first semester)***

Restriction: GENX 721

***GENX 730 Trauma and Emergencies in Rural Hospitals***  
***15 points (second semester)***

Restriction: GENX 722

**Further Information**

Raelene Abernethy  
Rural Postgraduate Administrator  
Department of General Practice and Rural Health  
PO Box 913, Dunedin 9054  
Email [raelene.abernethy@otago.ac.nz](mailto:raelene.abernethy@otago.ac.nz)  
Tel 03 479 9186  
Cell 021 263 2635

**PROGRAMME OF STUDY**

***Postgraduate Certificate in Clinician-Performed Ultrasound (PGCertCPU)***

The certificate requires both GENX 717 and GENX 718.

 ***GENX 717 Generalist Medical Echocardiography***  
***30 points (full year)***

This paper is studied concurrently with GENX 718 Generalist Medical Ultrasound for generalist medical practitioners who wish to gain basic skills in procedural and diagnostic echocardiography and ultrasound. Taught from Dunedin. Limited to eight participants. Full access to an ultrasound machine with both general and cardiac probes is essential.

 ***GENX 718 Generalist Medical Ultrasound***  
***30 points (full year)***

This paper is studied concurrently with GENX 717 Generalist Medical Echocardiography by generalist medical practitioners who wish to gain basic skills in procedural and diagnostic ultrasound and echocardiography. Taught from Dunedin. Limited to eight participants. Full access to an ultrasound machine with both general and cardiac probes is essential.

## Further information

Michelle Muir  
Administration Assistant  
Department of General Practice and Rural Health  
Dunedin School of Medicine  
University of Otago  
PO Box 913, Dunedin 9054  
Email michelle.muir@otago.ac.nz  
Cell 027 521 4733

## GERONTOLOGY

With an ageing population, this is an area of increasing need. The University of Otago, Christchurch offers two papers designed for health professionals and others to enhance gerontological knowledge and skills. The two papers may be taken singly or as a pair for the Postgraduate Certificate in Health Sciences (PGCertHealSc) or for the Postgraduate Diploma in Health Sciences (PGDipHealSc) or the Master of Health Sciences (MHealSc) degree.

The following papers are available:

### ***HASX 404 Health Care of the Elderly*** **30 points (not offered 2013, next offered first semester 2015)**

Introduces the study of ageing through demography and epidemiology, with special attention to service delivery and multidisciplinary care. Covers medical aspects of illness in the elderly including dementia, osteoporosis, falls, Parkinson's disease, continence, stroke, depression, altered presentation and pharmacology, and terminal care.

### ***HASX 409 Social Care of the Elderly*** **30 points (not offered 2013, next offered first semester 2014)**

Explores social, cultural, economic and policy contexts of ageing. Sections cover social theories of ageing, social support, normal ageing, services in community and residential settings, and resources for independence.

Both papers are run in three three-day blocks in Christchurch.

## Further information

Dr Sally Keeling  
Health Care of the Elderly  
Department of Medicine, The Princess Margaret Hospital  
PO Box 800, Christchurch  
Tel 03 337 7932  
Email sally.keeling@otago.ac.nz

## For further information on admission and academic eligibility:

Ruth Helms  
Manager, Academic Programmes  
University of Otago, Christchurch  
PO Box 4345, Christchurch 8140  
Tel 03 364 0527  
Email ruth.helms@otago.ac.nz

## HAZARD ASSESSMENT AND MANAGEMENT

With more legislation and stricter standards in New Zealand, there is a growing demand for people qualified to respond to society's increasing focus on hazard assessment and management. Legislation such as the Hazardous Substances and New Organisms Act means there is a demand for personnel who are not only trained in the appropriate scientific principles and practices, but also have a reliable knowledge of the legislative requirements.

## PROGRAMMES OF STUDY

### ***Postgraduate Diploma, Postgraduate Certificate and masters' programmes in Health Sciences (PGDipHealSc, PGCertHealSc and MHealSc) endorsed in Hazard Assessment and Management***

The postgraduate diploma, certificate and masters' programmes in Health Sciences (PGDipHealSc, PGCertHealSc and MHealSc) endorsed in Hazard Assessment and Management will provide further qualifications for professionals in a variety of disciplines and occupations involving hazard assessment and management. The diploma requires papers to the value of 120 points (60 for the certificate) from the papers listed below. The master's degree requires papers to the value of 120 points plus a thesis (120 points).

Note: The HAZX papers are web-based and use the University's distance teaching medium, Blackboard, requiring students to have internet access. Some papers have workshop components requiring students to come to Dunedin.

\* Papers marked with an asterisk are available throughout the year and start and end dates vary. Contact the Department of Microbiology and Immunology for details.

The following papers are available:

### ***HAZX 401 Management of Chemical Hazards*** **20 points (first semester)**

Principles that guide the identification and practical treatment of chemical hazards in today's society.

Restrictions: CHEX 477, CHEM 477

### ***HAZX 404 Environmental Risk Assessment and Management*** **20 points (second semester)**

Principles and practices underlying the identification, assessment, prevention, remediation and compliance requirements associated with environmental risks and hazards mainly related to the use of chemicals in today's society.

Students will be required to attend a full-day field workshop in Dunedin on Saturday 14 September, 2013, for lectures and a field trip related to some of the written course assessments.

Restrictions: CHEM 466, CHEX 466

### ***HAZX 405 Basic Toxicology*** **20 points (\*)**

Principles underlying identification, assessment, prevention, remediation and compliance associated with toxicological hazards in today's society.

### ***HAZX 406 Risk Management Law 1*** **20 points (\*)**

An introduction to legal processes and interpretation, the Resource Management Act 1991, and the Hazardous Substances and New Organisms Act 1996. There is a one-day workshop attending a court hearing.

### ***HAZX 408 Radiation Hazards*** **20 points (\*)**

An introduction to the nature and uses of radiation in New Zealand, and the legislation and regulations associated with radiation use in New Zealand. There is a one-day workshop on campus.

### ***HAZX409 New Organisms: Risk Assessment and Management*** **20 points (\*)**

New organisms in New Zealand: historical and legislative view; entry of new organisms; examples of risk assessment and management systems for established, new and potential organisms, including genetically modified organisms. There is a one-day workshop on campus.

Restrictions: MICR466, MICX466, MICR467, MICX467, HAZX402, HAZX403

### **OCCX 401 Occupational Health** **30 points (first semester)**

Introduction to occupational health, risk assessment, diseases caused by workplace hazards, ergonomics and rehabilitation. On-site workshop.

### **OCCX 402 Occupational Safety** **30 points (second semester)**

Legislation and the workplace; occupational hygiene and toxicology; safety resources; principles of safety management; accident theory and prevention; occupational health and safety training methods. On-site workshop.

### **HAZX 5 (Master's degree) thesis** **120 points**

The development, implementation and reporting of an original research project in an area related to hazard assessment and management.

#### **Further information**

##### **HAZX papers:**

Dr Michelle McConnell  
Department of Microbiology and Immunology  
University of Otago  
PO Box 56, Dunedin 9054  
Tel 03 479 5729  
Fax 03 479 8540  
Mob 021 279 6539  
Email michelle.mcconnell@otago.ac.nz

##### **OCCX papers:**

Occupational Health Secretary  
Department of Preventive and Social Medicine  
Dunedin School of Medicine  
University of Otago  
PO Box 913, Dunedin 9054  
Tel 03 479 7202  
Email occupational.health@otago.ac.nz  
Web <http://osms.otago.ac.nz/hazards>

## **HEALTH INFORMATICS**

Electronic information systems are revolutionising health care practice, research and education. Managing information efficiently improves patient satisfaction and makes time for new aspects of practice and for learning. Many health-care professionals realise they need skills in finding and using information, and in assessing information systems.

#### **PROGRAMME OF STUDY**

##### **Postgraduate Diploma in Health Informatics** **(PGDipHealInf)**

The Postgraduate Diploma in Health Informatics (PGDipHealInf) is an initiative of the University of Otago's Department of Information Science. It is intended for health-care professionals whose focus may be clinical-care delivery, management, education, quality assurance, information systems or research. Admission may be possible for those without an undergraduate qualification, but with significant health-care work experience. The programme consists of two core papers (HEIX 701 and HEIX 702) and any two of five other papers. The availability of each paper is subject to there being a sufficient number of registrations.

The following papers are available:

##### **HEIX 701 Essential Information Management Skills** **30 points (first semester and Summer School)**

Introduces computing and information systems concepts. Develops skills with applications such as web design, spreadsheet and database software. Emphasises searching and evaluating online information resources including MedLine and the internet. This paper may also be taken for other programmes or as a stand-alone paper.

##### **HEIX 702 Principles of Health Informatics** **30 points (second semester)**

Surveys health information systems, electronic medical records, telemedicine, computer-assisted learning, artificial intelligence, geographic information systems, decision making, social and ethical issues. Focuses on applying information and telecommunication technology to health care.

##### **HEIX 703 Health Information Systems** **30 points (second semester)**

Concepts and skills to understand, evaluate, select, implement or design a health information system. Includes problem definition, user acceptability issues, data modelling, database management systems, systems analysis, physical database design, health information transfer standards and future trends in health information systems. This paper is not designed to be available on its own or for credit to other programmes.

##### **HEIX 705 Computer-aided Learning in Health Care** **30 points (second semester)**

Information technology and educational issues in designing online learning materials for professional and general audiences. Includes health assessment, the history of computer-aided learning in health care, tools for package development, copyright law, delivery and distribution methods, human factors, usability analysis and package assessment. This paper is not designed to be available on its own for credit to other programmes.

##### **HEIX 706 Research Methods for Health Informatics** **30 points (first semester)**

An introduction to all aspects of the process of research, with a special emphasis on study designs common in health informatics and biomedical research. Students work through the process of research from developing a hypothesis, literature search, resolving ethical and cultural issues, refining a research question, designing a suitable study, measurement issues and database design, while simultaneously receiving an introduction to statistical analysis.

##### **HEIX 707 Health Ethics and the Internet** **30 points (each semester)**

A study of ethical issues as they apply to information on the internet. General ethical principles will be introduced and applied to e-health, including patient information, internet research, intellectual property, pirating and plagiarism on the internet.

##### **HEIX708 Health Data Management** **15 points (second semester)**

Understanding data collection management and information processing principles for clinical research purposes. Issues associated with data capture, external data imports, database design, metadata, data quality and integrity.

Papers are delivered over the internet with weekly direct online contact with a tutor.

## Further information

Alec Holt  
Director of Health Informatics  
Department of Information Science  
University of Otago  
PO Box 56, Dunedin 9054  
Tel 03 479 5032  
Email [aholt@infoscience.otago.ac.nz](mailto:aholt@infoscience.otago.ac.nz)  
Web [www.hein.otago.ac.nz](http://www.hein.otago.ac.nz)

## HEALTH PROMOTION

This programme offers a practical study of Health Promotion, with the foundations built from the five health promotion strategies of the Ottawa Charter – healthy public policy, supportive environments, community action, personal skills and reorienting the health sector. It emphasises the importance of the Treaty of Waitangi to effective health promotion in New Zealand. The programme views history and underlying values. It focuses on health promotion at national, regional and community levels.

The programme is directed towards people working in the New Zealand health services who wish to learn practical health promotion methods and strategies, and those resident in New Zealand who wish to work in that area in the future.

### PROGRAMME OF STUDY

#### *Certificate in Health Promotion (CertHProm)*

The Certificate in Health Promotion (CertHProm) is a four-paper programme aimed at developing practical knowledge and up-to-date skills in health promotion to enable students to work with New Zealanders to improve their health.

The following papers are available:

#### *HAPX 111 Health Promotion Principles 30 points (first semester)*

Covers key principles of health promotion such as the broad definition of health, the use of a comprehensive range of strategies and the application of health promotion theory.

#### *HAPX 112 Health Programme Planning 30 points (second semester)*

Introduces health promotion programme planning, implementation and evaluation using a variety of planning models.

#### *HAPX 113 Māori and Community Health Development 30 points (not offered 2013, expected to be offered in 2014)*

Covers the promotion of Māori health within the context of the Treaty of Waitangi using examples of recent Māori health promotion initiatives. Includes principles of social change strategy, such as social support and community participation.

#### *HAPX 114 Contemporary Health Issues 30 points (not offered 2013, expected to be offered in 2014)*

Examines current issues and concepts that shape health promotion internationally and within New Zealand. Includes the political context of health, the structure of health systems and examples of key health promotion issues.

Students may take no more than two papers in one academic year. The shortest time in which the certificate can be completed is two academic years.

## Further information

Kerry Hurley  
Department of Public Health  
University of Otago, Wellington  
PO Box 7343, Wellington 6242  
Tel 04 385 5541 extension 4807  
Fax 04 389 5319  
Email [pubh.wsmhs@otago.ac.nz](mailto:pubh.wsmhs@otago.ac.nz)  
Web [www.uow.otago.ac.nz/academic/dph](http://www.uow.otago.ac.nz/academic/dph)

## HUMAN NUTRITION

There is a need for formal postgraduate education to enhance the human nutrition knowledge and skills of New Zealand health and education professionals. The Department of Human Nutrition has an international reputation and proven track record in providing high quality, tertiary-level human nutrition education.

### PROGRAMMES OF STUDY (Subject to approval)

#### *Postgraduate Certificate in Health Sciences, Postgraduate Diploma in Health Sciences, Master of Health Sciences, all endorsed in Human Nutrition*

These three qualifications are intended for New Zealand health and education professionals who are seeking to develop or update their nutrition knowledge and skills in order to complement their work as nurses, pharmacists, general practitioners, dentists, dental nurses, dietitians, health education or home economics teachers. These are tertiary, not professional, qualifications. It is emphasised that these qualifications do not prepare participants to practise as dietitians.

#### *Postgraduate Certificate in Health Sciences endorsed in Human Nutrition*

The certificate programme is designed to update the nutrition knowledge of individuals currently working in the health-care or education sector and to provide an entry pathway for these individuals to return to or continue tertiary studies and gain a postgraduate qualification.

The certificate programme consists of two 30-point distance-taught papers: NUTX 401 Principles of Human Nutrition (compulsory) and one of NUTX 402 Nutrition and Health Promotion, NUTX 404 Nutrition and Chronic Disease, or NUTX 407 Advanced Sports Nutrition. The PGCertHealSc endorsed in Human Nutrition is available to those with a Bachelor of Science (BSc) or Bachelor of Physical Education (BPhEd) or Bachelor of Consumer and Applied Science (BCAppSc) or Bachelor of Applied Science (BAppSc) degree that includes biological sciences (or equivalent qualification), or a Health Sciences degree, or an acceptable tertiary-level qualification (e.g. nursing, pharmacy or physiotherapy). A background in nutrition is not required.

The PGCertHealSc (Human Nutrition) candidate will normally follow a programme of study for not less than one year of full-time study, or the equivalent in part-time study, completing the requirements for the certificate within one year (full-time candidates) or two years (part-time candidates) of admission to the programme.

Students successfully completing the PGCertHealSc in Human Nutrition would be able to proceed to the postgraduate diploma programme (PGDipHealSc) endorsed in Human Nutrition, if they choose.

### ***Postgraduate Diploma in Health Sciences endorsed in Human Nutrition***

The diploma programme is designed to update the nutrition knowledge of individuals currently working in the health-care or education sector and to provide an entry pathway for these individuals to continue tertiary studies and gain a postgraduate qualification. Students who complete the diploma programme and who meet the criteria may gain entry to a distance-taught Master's programme.

The diploma programme consists of four 30pt papers: NUTX 401 Principles of Human Nutrition and at least two of NUTX 402 Nutrition and Health Promotion, NUTX 404 Nutrition and Chronic Disease, and NUTX 407 Advanced Sports Nutrition. The remaining 30 points will be selected from an approved list of papers on the Health Sciences schedule (e.g. CHHX 701 Community Child Health, HASX 404 Health Care of the Elderly, PSMX 430 Motivating Behaviour Change 1, GENX 704 Tūhauora Māori Health, HASX 417 Health Sciences Research Methods, PHCX 506 Research Methods, AVMX 785 Research Methods, GENX 731 Supporting Healthier Lifestyles) or other approved papers to constitute a coherent and integrated programme. Students in the main centres may also select approved non-distance-taught postgraduate papers.

The PGDipHealSc (Human Nutrition) candidate will normally follow a programme of study for not less than one year of full-time study, or the equivalent in part-time study, completing the requirements for the diploma within two years (full-time candidates) or four years (part-time candidates) of admission to the programme.

Students successfully completing the PGDipHealSc endorsed in Human Nutrition would be able to proceed, if they have at least a B+ average, to a distance-taught Master's programme.

### ***Master of Health Sciences endorsed in Human Nutrition***

This programme may be undertaken either as a thesis option or a coursework option.

Students interested in undertaking a MHealSc degree are advised to complete an approved 30-point research methods paper as part of their PGDipHealSc. A student who has completed the PGDipHealSc first without an approved research methods paper will normally be required to complete such a paper before commencing a research thesis or dissertation.

**The thesis option** consists of four 30-point papers: NUTX 401 Principles of Human Nutrition; two of NUTX 402 Nutrition and Health Promotion, NUTX 404 Nutrition and Chronic Disease, and NUTX 407 Advanced Sports Nutrition; and 30 points of approved research methods paper and a 120 point thesis.

**The coursework option** consists of six 30-point papers: NUTX 401 Principles of Human Nutrition; two of NUTX 402 Nutrition and Health Promotion, NUTX 404 Nutrition and Chronic Disease, and NUTX 407 Advanced Sports Nutrition; approved research methods paper to the value of 30 points, further approved papers (see above; may include the remaining NUTX paper) to the value of 60-points; and a 60 point research dissertation.

Eligible students will be New Zealand-resident professionals with a PGDipHealSc (Human Nutrition), PGDipSc (Community Nutrition) or PGDipDiet, with at least a B+ average.

The following papers are available, subject to sufficient enrolments:

### ***NUTX 401 Principles of Human Nutrition 30 points (first semester)***

Food sources, digestion, absorption, bioavailability, functions, assessment, and recommended intake, for all nutrient groups: i.e. macronutrients (proteins, lipid, carbohydrate), minerals, electrolytes, trace elements, and vitamins. Current research will be discussed.

### ***NUTX 402 Nutrition and Health Promotion 30 points (not offered 2013)***

The aim of the paper is to become familiar with current evidence-informed approaches to nutrition education, promotion, and communication.

### ***NUTX 404 Nutrition and Chronic Disease 30 points (second semester)***

A critical and in-depth analysis of current and topical issues in the role of nutrition in chronic disease, specifically heart disease, diabetes, obesity, and cancer.

### ***NUTX 407 Advanced Sports Nutrition 30 points (second semester)***

A critical and in-depth analysis of current and topical issues in the nutritional aspects of exercise, performance and sport.

### **Further information**

Department of Human Nutrition  
University of Otago  
PO Box 56, Dunedin 9054  
Tel 03 479 7959  
Email [human-nutrition@otago.ac.nz](mailto:human-nutrition@otago.ac.nz)  
Web [www.otago.ac.nz/humannutrition](http://www.otago.ac.nz/humannutrition)

## **INTERPERSONAL PSYCHOTHERAPY**

This programme provides health-care workers with a knowledge base of IPT at an academic level. It enables participants to develop a deeper understanding of the process of IPT and to develop clinical skills. The programme is taught through the University of Otago, Christchurch.

### **PROGRAMME OF STUDY**

#### ***Postgraduate Diploma in Health Sciences (PGDipHealSc) endorsed in Interpersonal Psychotherapy***

This 120-point diploma programme consists of PSMX 427 together with three other PSMX papers, including one or both of PSMX 425 and PSMX 426.

The following papers are available:

#### ***PSMX 425 Introduction to Interpersonal Psychotherapy 30 points (first semester)***

A basic understanding of interpersonal psychotherapy for depression.

#### ***PSMX 426 Advanced Applications of Interpersonal Psychotherapy 30 points (second semester)***

A deeper understanding of interpersonal psychotherapy for depression and its application to other disorders.

#### ***PSMX 427 Interpersonal Psychotherapy 60 points (full year)***

Teaching over the year will consist of four two-day block courses, group supervision sessions of three hours per month and use of a logbook to document skills in practice.



## Further information

Judith Stone  
Departmental/Postgraduate Administrator  
Department of Psychological Medicine  
University of Otago, Christchurch  
PO Box 4345, Christchurch 8140  
Tel 03 372 0404  
Fax 03 372 0407  
Email [judith.stone@otago.ac.nz](mailto:judith.stone@otago.ac.nz)

## MEDICAL TECHNOLOGY

Medical technology provides training for the individual just starting or wishing to start work as a technologist in areas of cardiology, sleep medicine or respiratory medicine. The programmes provide a deep understanding of normal and abnormal physiological function; the technology used in clinical practice and commonly used therapeutic approaches.

### PROGRAMMES OF STUDY

#### *Postgraduate Certificate in Medical Technology (PGCertMedTech)*

A one-year, part-time programme comprising two distance taught papers, MTEX 701 and MTEX 702, giving the student a solid introduction to cardiovascular, respiratory and sleep physiology, and the basics of physiological monitoring.

#### *Postgraduate Diploma in Medical Technology (PGDipMedTech) endorsed in Cardiology*

A two-year, part-time programme comprising four distance taught papers, MTEX 701 – 704, giving the student an understanding of cardiovascular disease and the technology involved in current cardiology.

#### *Postgraduate Diploma in Medical Technology (PGDipMedTech) endorsed in Sleep Medicine*

A two-year, part-time programme comprising four distance taught papers, MTEX 701, 702, 705 and 706, giving the student an understanding of sleep disorders, particularly sleep disordered breathing, and the technology and therapy commonly used in sleep medicine.

The following papers are available:

#### *MTEX 701 Biomedical Science for Medical Technicians 30 points (full year)*

Biomedical sciences including cardiovascular physiology and pathophysiology, respiratory physiology and pathophysiology, the physiology of sleep, and respiratory and cardiovascular pharmacology.

#### *MTEX 702 Physiological Monitoring for Medical Technicians 30 points (full year)*

Understanding the principles of physiological monitoring, with an emphasis on cardiovascular, respiratory and neurological signals, imaging and the interpretation of physiological data.

MTEX 701 and MTEX 702 have no specific prerequisites.

#### *MTEX 703 Cardiovascular Science for Medical Technicians 30 points (full year)*

The physiology of the cardiovascular system and changes in cardiovascular function in abnormal physiological and pathological conditions.

Prerequisite: MTEX 701

#### *MTEX 704 Cardiovascular Technology 30 points (full year)*

An understanding of the principles underlying the measurement of cardiovascular function, the interpretation of cardiovascular data and therapeutic use of advanced cardiology technology.

Prerequisite: MTEX 702

#### *MTEX 705 Sleep Medicine*

##### *30 points (full year)*

An understanding of normal sleep and factors that alter sleep and wakefulness, and pathophysiological sleep disorders.

Prerequisite: MTEX 701

#### *MTEX 706 Sleep Technology*

##### *30 points (full year)*

An understanding of the principles underlying the measurement of sleep and sleep-related disorders, and appropriate therapeutic interventions.

Prerequisite: MTEX 702

## Further information

Kim Cosner  
Musculoskeletal and Postgraduate Programme Co-ordinator  
Department of Surgery and Anaesthesia  
University of Otago, Wellington  
PO Box 7343, Wellington 6242  
Tel 04 918 5366  
Fax 04 389 5318  
Email [mtex.wsmhs@otago.ac.nz](mailto:mtex.wsmhs@otago.ac.nz)  
Web [www.wnmeds.ac.nz/medtech.html](http://www.wnmeds.ac.nz/medtech.html)

## MENTAL HEALTH

Papers on the nature, extent and assessment of mental disorders, and other aspects of mental disorders are offered by the Department of Psychological Medicine at the University of Otago, Christchurch. These papers are designed for health professionals already working in the mental health area. The majority of papers offered for this programme are taught by four two-day block courses in Christchurch.

### PROGRAMMES OF STUDY

#### *Postgraduate Certificate in Health Sciences (PGCertHealSc) endorsed in Mental Health*

The Postgraduate Certificate in Health Sciences (PGCertHealSc) endorsed in Mental Health consists of PSMX 401 or NURX 403, plus one other approved 30-point PSME or PSMX paper, excluding PSMX 401. The two papers can also be taken as part of a 120-point Postgraduate Diploma in Health Sciences (PGDipHealSc) endorsed in Mental Health.

#### *Postgraduate Diploma in Health Sciences (PGDipHealSc) endorsed in Mental Health*

The postgraduate Diploma in Health Sciences (PGDipHealSc) endorsed in Mental Health consists of three approved papers from the PSME/PSMX papers, NURX 403, NURX 404 (90 points) and other approved paper/s to the value of 30 points.

The following papers are available:

#### *PSMX 401 Nature, Extent and Assessment of Mental Disorders*

##### *30 points (first semester)*

Examines the key features of psychiatric disorders, their epidemiology, aetiology and an introduction to their treatment. It also provides an understanding of the history of current classification systems used in psychiatric practice. The paper develops an awareness of professional, ethical, cultural and research frameworks related to psychiatric disorders and an ability to critically evaluate.

### **PSMX 405 Rehabilitation and Management of Mental Disorders**

**30 points (second semester)**

This paper examines the care systems for individuals, families and the community, and will provide students with a comprehensive knowledge of the characteristics of mental disorders such as schizophrenia, affective anxiety, alcohol and drug and personality disorders and their management; an understanding of living with mental disorders for both the consumer and the family; an understanding of Māori mental health issues, the significance of the Treaty of Waitangi and education in cultural safety in their practice; an understanding of treatments for mental disorder; an ability to undertake risk assessment and manage risk in clinical practice.

### **PSMX 406 Special Topic : Mental Health Research Methods**

**30 points (second semester)**

This paper introduces the principles of research design and methodology with particular reference to research relating to the broad area of mental health. Students will learn to critically evaluate studies so that they can make sound judgments about them, and will learn how to design research studies in order to answer clinical questions, including evaluation and auditing of programmes.

### **PSMX 407 Forensic Psychiatry**

**30 points (first semester)**

The principles and practice of forensic psychiatry.

Note: Students will require evidence of suitable clinical experience to be admitted to this paper.

### **PSMX 428 Psycho-oncology**

**30 points (second semester)**

An introduction to psychological issues, processes and treatment models relevant to cancer settings.

Each paper requires participation in four two-day block courses and one examination in Christchurch. Applicants are expected to be working in the mental health field in New Zealand.

### **PSMX 429 Suicidal Behaviours, Research and Prevention**

**30 points (first semester)**

A paper for clinicians, nurses and allied health professionals which aims to provide an introduction to suicidal behaviours, research and prevention. It provides a critical approach to the complex and often emotive issue of suicide, focusing around three themes: the epidemiology of suicidal behaviour; suicide research and prevention; assessment, treatment and management of suicidal individuals.

Note: Also see information on other PSMX papers in this guide – PSMX 407 Forensic Mental Health, PSMX 432 Perinatal Mental Health, PSMX 433 An Introduction to Mental Health, PSMX 438 Reproductive Mental Health.

#### **Further information**

Judith Stone  
Department/Postgraduate Administrator  
Department of Psychological Medicine  
University of Otago, Christchurch  
PO Box 4345, Christchurch 8140  
Tel 03 372 0404  
Fax 03 372 0407

## **MUSCULOSKELETAL MEDICINE / MUSCULOSKELETAL MANAGEMENT**

### **For Medical Practitioners**

Musculoskeletal medicine deals with patients who have acute or chronic musculoskeletal and neural dysfunction. Patients with these problems constitute up to 15 per cent of a general practitioner's caseload. Those with back and neck pain, in particular, impose a heavy economic and social burden on the community. Musculoskeletal medicine is based on biomedical and psychosocial assessment and treatment, using therapeutic skills including manual medicine, needling and acupuncture, injection techniques, pain intervention techniques, applied biomechanics, pharmacotherapy, psychosocial management and appropriate referral. Some of the papers offered are of significant benefit to those involved in other allied health professional areas such as physiotherapy, occupational therapy, psychology, osteopathy and chiropractic.

### **Other Health Professionals**

Health professionals such as nurses, physiotherapists, podiatrists, occupational therapists, psychologists, osteopaths and chiropractors may be interested in enrolling in the distance-taught papers of the course. They contribute towards the Postgraduate Certificate and Diploma in Health Sciences (PGCertHealSc and PGDipHealSc) endorsed in Musculoskeletal Management or the Master of Health Sciences degree (MHealSc) endorsed in Musculoskeletal Management.

### **PROGRAMMES OF STUDY**

#### **Postgraduate Diploma in Musculoskeletal Medicine (PGDipMSM)**

The Postgraduate Diploma in Musculoskeletal Medicine (PGDipMSM) is for registered medical practitioners who wish to continue their education in musculoskeletal disorders; particularly those encountered in general practice. It is a two-to four-year part-time course of six compulsory (MSMX 701, MSMX 702, MSMX 703, MSMX 704, MSMX 708, MSMX 709) and two optional papers, taught by a combination of on-campus, distance and online instruction.

#### **Postgraduate Certificate in Musculoskeletal Medicine (PGCertMSM)**

A Postgraduate Certificate in Musculoskeletal Medicine (PGCertMSM) is also offered, consisting of three compulsory papers (MSMX 701, 704 and 708) and one other optional distance-taught paper.

#### **MSMX 701 Clinical Diagnosis**

**15 points (full year: Part I – March, Part II – August)**

On campus, restricted to medical graduates, prerequisite for MSMX 709.

#### **MSMX 702 Musculoskeletal Tissues**

**15 points (first semester)**

An evaluation of the normal and abnormal structure and function of neuromusculoskeletal tissues. Includes the anatomy, histology, physiology and pathology of these tissues.

#### **MSMX 703 Musculoskeletal Disorders**

**15 points (first semester)**

Clinical evaluation, assessment and management of a wide range of musculoskeletal disorders. The paper focuses on a clinical approach to musculoskeletal problems as they present in primary care.

#### **MSMX 704 Introduction to Pain**

**15 points (first semester)**

Pain as a multidimensional phenomenon. Concepts and history, neuropathophysiology of peripheral and central pain mechanisms, pain measurement and the psychological, social, and economic aspects of both acute and chronic pain.

- MSMX 705 Regional Disorders – Spine**  
**15 points (not offered 2013, next offered first semester 2014)**  
 Evaluates structure, function, disorders and diseases of the vertebral column and associated tissues. Includes anatomy, biomechanics, pathology, clinical assessment and treatment options.
- MSMX 706 Regional Disorders – Limbs**  
**15 points (not offered 2013, next offered first semester 2014)**  
 Evaluates structure, function, disorders and diseases of the limbs. Includes anatomy, biomechanics, pathology, clinical assessment and treatment options.
- MSMX 707 Musculoskeletal Rehabilitation**  
**15 points (not offered 2013, next offered second semester 2014)**  
 Prevention and rehabilitation. Includes an overview of the principles of epidemiology, critical understanding and analysis of research, clinical decision analysis and clinical epidemiology.
- MSMX 708 Introduction to Pain Management**  
**15 points (second semester)**  
 Management and treatment of all forms of musculoskeletal pain and dysfunction including modern psychosocial approaches to therapy.

**MSMX 709 Clinical Therapeutics**  
**15 points (first semester)**  
 This paper is a progression from paper MSMX 701 – Clinical Diagnosis. This is an on-campus, hands-on course, designed to teach postgraduate medical students specific practical clinical skills in the treatment of musculoskeletal disorders, including the assessment of efficacy according to the current evidence-based principles. This is normally held in Christchurch.
- MSMX 710 Recreational and Sports Injuries**  
**15 points (not offered 2013, next offered second semester 2014)**  
 Evaluation and management. Includes epidemiology, biomechanics, classification of sports injuries, and the principles of injury assessment, treatment and rehabilitation. An interactive online internet facility (Blackboard) complements teaching and it is highly recommended that all students have internet access. Two on-campus course components concentrate on clinical skills, psychosocial assessment methods and techniques for the management of musculoskeletal pain and dysfunction.
- MSMX 711 Pain Assessment**  
**15 points (second semester)**  
 This paper ideally complements the two existing pain papers (MSMX 704 and MSMX 708) and, with them, provides a full and detailed overview of neurobiology, psychology, assessment and treatment modalities available for pain.

**Further information**

Veronica McGrogan  
 Departmental / Programmes Manager  
 Dept of Orthopaedic Surgery and Musculoskeletal Medicine  
 University of Otago, Christchurch  
 PO Box 4345, Christchurch 8140  
 Tel 03 364 1086  
 Fax 03 364 0909  
 Email veronica.mcroggan@otago.ac.nz

Dr Jim Borowczyk  
 Academic Co-ordinator  
 Dept of Orthopaedic Surgery and Musculoskeletal Medicine  
 University of Otago, Christchurch  
 PO Box 4345, Christchurch 8140  
 Tel 03 364 1086  
 Fax 03 364 0909  
 Email jim.borowczyk@otago.ac.nz  
 Web www.uoc.otago.ac.nz/departments/MSM

**NURSING**

Registered nurses are offered the opportunity to advance their qualifications within their specialty area of practice. Studies are aligned with National Health Policy directives and the Nursing Council of New Zealand framework for postgraduate nursing education (2002), and are responsive to community requirements. Registered nurses considering study toward nurse practitioner status are advised to seek course counselling prior to admission.

Courses are both clinically and theoretically focused and will provide registered nurses (RNs) with advanced knowledge and skills. Eligibility for enrolment requires that the registered nurse:

- have registration as a nurse from a three-year programme or course congruent with the Health Practitioner Competence Assurance Act 2003
- hold a current practising certificate, and
- currently work in a clinical setting.

You are strongly advised to contact the Centre for Postgraduate Nursing Studies to discuss your programme of study.

Teaching for each paper is by way of:

- study blocks and online sessions (many papers can be undertaken completely online)
- audioconference
- email and telephone communication
- Blackboard.

**PROGRAMMES OF STUDY**

**Postgraduate Certificate in Health Sciences (PGCertHealSc)**

The Postgraduate Certificate in Health Sciences (PGCertHealSc) has a number of endorsed options which enable registered nurses to advance in a specific area of practice. Each endorsement consists of two papers, usually completed in one year of part-time study.

Requirements for the endorsements are:

- ~ Advanced Clinical Nursing NURX 405 and NURX 416
- ~ Nursing (Gerontology) NURX 405 and NURX 426
- ~ Nursing (Advanced Mental Health) NURX 403 and NURX 404
- ~ Nursing (High Acuity) NURX 405 and NURX 411
- ~ Nursing (Leadership and Management) NURX 423 and NURX 424
- ~ Nursing (Long-term Condition Management) NURX 427 and NURX 428
- ~ Nursing (Primary Health Care) NURX 405 and NURX 413
- ~ Nursing (Specialty Mental Health) NURX 403 and NURX 409.

**Postgraduate Diploma in Health Sciences (PGDipHealSc)**

The Postgraduate Diploma in Health Sciences (PGDipHealSc) has two endorsed options which enable registered nurses to advance in a specific area of practice. Requirements for the endorsements are:

- ~ Nursing: approved papers to the value of 120 points (typically, four 30-point papers) comprising two approved papers in nursing, an approved research methods paper worth 30 points (usually NURX 415) and one other approved paper worth 30 points.
- ~ Nursing (Primary Health Care): NURX 405, NURX 413, an approved research methods paper usually NURX 415 and one other approved paper worth 30 points.

~ Rural Nursing: NURX 405, 416, 431 and an approved research methods paper worth 30 points.

The following papers are available:

***NURX 403 Mental Health Nursing Practice  
30 points (first semester)***

This paper provides a theoretical basis for mental health nursing through the use of a problem-based learning approach and the incorporation of critical social theory as a basis for reflection on mental health nursing practice.

***NURX 404 Advanced Mental Health Nursing Practice  
30 points (second semester)***

Advanced clinical practice in a mental health nursing context. Critique of practice and the application of research and theoretical principles to mental health nursing practice.

***NURX 405 Health Assessment and Advanced Nursing Practice  
30 points (first semester)***

A clinical/therapeutic focus is integrated with research-based theory. Students are offered the opportunity to demonstrate advanced nursing competencies in their scope of practice.

***NURX 409 Mental Health Nursing Practicum  
30 points (second semester)***

A practicum offering clinical knowledge and skills for mental health care delivery. Critique of practice and application of research and theoretical principles to mental health clinical practice. This paper may be taken only by nurses with no more than six months' clinical experience in a mental health specialty.

***NURX 411 High Acuity Nursing  
30 points (second semester)***

Consisting largely of a practicum, this paper covers professional skills and knowledge related to clinical competence in high dependency nursing.

***NURX 413 Nursing – Primary Health Care – Rural/Urban  
30 points (second semester)***

Consisting largely of a practicum, this paper covers professional skills and knowledge related to clinical competence in primary health care nursing.

***NURX 415 Nursing Research Methods  
30 points (first semester)***

An introduction to a variety of approaches appropriate to addressing nursing research questions. The application of ethics, process and methodology in quantitative and qualitative styles is covered.

***NURX 416 Nursing – Applied Pharmacology  
30 points (second semester)***

This paper will cover physiology, mechanisms of action of pharmacological agents, prescribing frameworks, monitoring and adverse reactions. Regulation of prescribing is reviewed.

***NURX 418 Nursing Education – Principles and Practice  
30 points (second semester)***

This paper addresses principles of education theory and practice related to clinical and nursing education settings. Pedagogical approaches are introduced and the socio-political foundations of nursing education are evaluated.

***NURX 423 Nursing Leadership and Management 1  
30 points (first semester)***

The learning aims of this paper are based around key themes involving the management of nursing communities. Themes include facilitating change, human resources, budgeting, team-building and the tasks of nursing management.

***NURX 424 Nursing Leadership and Management 2  
30 points (second semester)***

This paper encourages the application of theoretical knowledge to cases, and emphasises skill development for nurse leaders in analysis, independent critical thinking and innovative problem solving.

***NURX 426 Nursing – Gerontology  
30 points (second semester)***

Consisting largely of an applied practicum in the core knowledge of gerontology nursing allied with a specialty practice focus in hospital, community and/or home nursing facilitating advanced nursing practice.

***NURX 427 Long-term Condition Management  
30 points (first semester)***

Principles of effective long-term condition management, including best practice clinical guidelines, practice-based resources, cultural competence, patient self-management, early detection, impact of chronic conditions, end-of-life care.

***NURX 428 Long-term Condition Management  
(Advanced)  
30 points (second semester)***

Principles of ongoing culturally appropriate long-term condition management including implementation of illness prevention, patient self-management approaches, integrated care, end-of-life care, population-based approaches and change management processes.

***NURX 431 Rural Nursing  
30 points (second semester)***

Explores the concept of rural nursing and advances theoretical knowledge and practical skills to facilitate practice in rural hospital and community settings.

**Further information**

Amanda Clifford  
Administrator  
Centre for Postgraduate Nursing Studies  
University of Otago, Christchurch  
PO Box 4345, Christchurch 8140  
Tel 03 364 3852  
Fax 03 364 3855  
Email [amanda.clifford@otago.ac.nz](mailto:amanda.clifford@otago.ac.nz)  
Web [www.otago.ac.nz/christchurch/departments/nursing/](http://www.otago.ac.nz/christchurch/departments/nursing/)

For Mental Health papers: NURX 403,404 & 409, contact:

Judith Stone  
Department/Postgraduate Administrator  
Department of Psychological Medicine  
University of Otago, Christchurch  
PO Box 4345, Christchurch 8140  
Tel 03 372 0404  
Fax 03 372 0407  
Email [judith.stone@otago.ac.nz](mailto:judith.stone@otago.ac.nz)

## OBSTETRICS AND MEDICAL GYNAECOLOGY

Aspects of everyday practice are presented by experts in the field, and current controversies and daily dilemmas are discussed by staff and students at regular audioconferences. The papers offered are suitable for doctors, midwives, family planning trainees, GPs and continuing medical education registrants. Papers may be studied as stand-alone subjects or for credit towards two qualifications.

### PROGRAMMES OF STUDY

#### *Postgraduate Diploma in Obstetrics and Medical Gynaecology (PGDipOMG)* 120 points

This requires completion of four distance-taught papers and two residential courses to be completed over the minimum time of 12 months. There is also a clinical assessment examination, OBGX 717. This examination can be taken after a minimum clinical experience of six months following satisfactory completion of a logbook. This is usually in June or December and takes place in either Auckland or Wellington.

#### *Postgraduate Certificate in Women's Health (PGCertWHlth)* 60 points

This requires completion of three of the four distance-taught papers and one residential course (OBGX 718 or OBGX 719). The four distance-taught papers are OBGX 712, OBGX 713, OBGX 715, OBGX 716 (18 points each). Each of these papers consists of six two-hour evening audioconferences conducted fortnightly. Each paper takes 12 weeks to complete. Each paper is assessed by six topic-based assignments and a multiple choice examination at the end of the 12 weeks which can be sat at your local centre. The topics covered are listed below.

#### *OBGX 712 Pre and Early Pregnancy Care* 18 points (each semester – starting January and June)

Covering the care of women planning for a pregnancy or who wish to avoid pregnancy. It also deals with first trimester pregnancy care and common complications, including miscarriage, and diagnoses of lower abdominal pain in early pregnancy.

#### *OBGX 713 Pregnancy Care in the Community* 18 points (each semester – starting April and September)

Content and rationale of antenatal and postnatal visits, birthing, and relevant anatomy and physiology of pregnancy and labour. Medical disorders in pregnancy, malrepresentations, haemorrhage, important obstetric emergencies and conditions, breast feeding and puerperium, well-baby check, common neonatal disorders to include jaundice, respiratory distress, seizures, infections, intracranial bleeding and hypothermia.

#### *OBGX 715 Medical Gynaecology I* 18 points (each semester – starting January and June)

Giving a grounding beyond undergraduate training in women's health reproductive issues. Covers adolescent health, screening for sexually transmitted infections, common presentations, such as menstrual disorders, vulval disorders and menopausal issues.

#### *OBGX 716 Medical Gynaecology II* 18 points (each semester – starting April and September)

Giving a foundation on topics such as adolescent gynaecology, termination of pregnancy, continence, fertility, gynaecology, oncology, and violence and abuse issues.

#### *OBGX 717 Obstetrics and Gynaecology Clinical Training* 36 points (full year and each semester)

This is a clinical assessment paper and is offered to PGDipOMG candidates only. It requires the completion of a logbook confirming a range of minimal clinical experience. Examination is by a clinical examination which may take the form of an OSCE. This cannot be completed in less than six months.

#### Residential papers:

OBGX 718 and OBGX 719 are residential papers held in Christchurch each lasting three days.

#### *OBGX 718 Obstetrics and Gynaecology Residential Course 1* 6 points (each semester)

Introductory course suitable for those with little/no clinical experience. The course includes practical assessments, practicalities of contraception and management of STIs. There is a short written practical assessment.

#### *OBGX 719 Obstetrics and Gynaecology Residential Course 2* 6 points (each semester)

Designed for students with some clinical experience and includes revision of topics such as menopause, gynaecology and mood disorders in pregnancy. There is a short written practical assessment.

#### Further information

Amanda Phillips  
Distance Learning Co-ordinator  
Dunedin School of Medicine  
PO Box 913, Dunedin 9054  
Tel 03 474 7825  
Fax 03 479 7817  
Email wch.distancelearning@otago.ac.nz

## OCCUPATIONAL AND AVIATION MEDICINE (including Aeromedical Retrieval and Transport)

The Occupational and Aviation Medicine Unit provides training to registered medical practitioners and other health professionals in nearly all countries of the world. Some participants are airline or military flying doctors, but most have an interest in civil and general aviation, air ambulance or retrieval medicine, occupational medicine and associated medical problems.

Doctors who have completed the programmes have become specialists in occupational medicine and have incorporated the programme into their FAFOM or MFOM training programme. Anaesthetists and International SOS doctors have enhanced their effectiveness by training in the aeromedical aspects of their job. Other specialists come from neurosurgery, trauma and emergency medicine, respiratory medicine, psychiatry and pathology.

### PROGRAMMES OF STUDY

Note: The Postgraduate Certificate and Diploma in Health Sciences and the degree of Master of Health Sciences (endorsed in specified subjects) may be taken by nurses and allied health professionals. The other programmes may be taken only by medical practitioners.

#### *Postgraduate Certificate in Health Sciences (PGCertHealSc)* endorsed in Aeromedical Retrieval and Transport

A one-year, part-time programme comprising two distance-taught papers, AVMX 719 and AVMX 720.

**Postgraduate Certificate in Aeromedical Retrieval and Transport (PGCertAeroRT)**

A one-year, part-time programme comprising two distance-taught papers, AVMX 717 and AVMX 718.

**Postgraduate Certificate in Civil Aviation Medicine (PGCertCAvMed)**

An entry-level qualification for medical practitioners who wish to be accredited as CAA aviation medical examiners. The programme consists of two papers, AVMX 711 and AVMX 714.

**Postgraduate Certificate in Occupational Medicine (PGCertOccMed)**

A one-year, part-time programme comprising two distance-taught papers, AVMX 715 and AVMX 716.

**Postgraduate Diploma in Health Sciences (PGDipHealSc) endorsed in Aeromedical Retrieval and Transport**

A two-year, part-time programme comprising four distance-taught papers, AVMX 719 and AVMX 720 (normally completed first for the Postgraduate Certificate in Health Sciences) and AVMX 717 and AVMX 718.

**Postgraduate Diploma in Aeromedical Retrieval and Transport (PGDipAeroRT)**

A two-year, part-time programme comprising four distance-taught papers, AVMX 717 and AVMX 718 (normally completed first for the Postgraduate Certificate in Aeromedical Retrieval and Transport) and AVMX 721 and AVMX 722.

**Postgraduate Diploma in Occupational Medicine (PGDipOccMed)**

A two-year, part-time programme comprising four distance-taught papers, AVMX 715 and AVMX 716 (normally completed first for the Postgraduate Certificate in Occupational Medicine) and AVMX 723 and AVMX 724.

**Master of Aviation Medicine (MAvMed)**

Eight AVMX papers, including AVMX711 – 714. The other four papers will be taken from the occupational medicine or aeromedical retrieval and transport streams and may also allow award of a certificate and/or diploma in that discipline

**Master of Health Sciences (MHealSc) endorsed in Aeromedical Retrieval and Transport, Aviation Medicine, and Occupational Medicine, or a PhD in any of these fields.**

Research supervision is also available for the degree of Master of Health Sciences (MHealSc) endorsed in any of three specialisations (Aeromedical Retrieval and Transport, Aviation Medicine, Occupational Medicine) or for PhD students in appropriate locations outside Wellington.

The following papers are available:

- ④ **AVMX 711 Aviation Physiology**  
**30 points (not offered 2013, expected to be offered 2014)**  
The effects of pressure change; altitude physiology; oxygen equipment; vestibular forms of spatial disorientation; visual and central forms of disorientation; vision in aviation; acceleration; ageing and performance; sudden incapacitation.
- ④ **AVMX 712 Aircrew Health and Performance**  
**30 points (second semester)**  
Short-term acceleration and aircrew flying clothing; aviation pathology and medical investigation of aircraft accidents; education and training for commercial flight crew; noise, vibration and communication; thermal physiology, rescue and survival; circadian rhythms and fatigue; human performance in aviation; ergonomics in aviation; work performance.
- ④ **AVMX 713 Airport and Travel Health**  
**30 points (first semester)**  
Medical aspects of air traffic control; airport services; aviation toxicology and agricultural aviation; passenger cabin safety; traveller health; the health of flight attendants; airline aviation medicine; food hygiene and airline catering; air ambulances.
- ④ **AVMX 714 Clinical Aviation Medicine**  
**30 points (not offered 2013, expected to be offered 2014)**  
Medical certification and risk assessment; hazards of medication in flying; aviation ophthalmology; aviation otolaryngology; aviation psychiatry; aviation neurology and neurosurgery; aviation cardiology.
- ④ **AVMX 715 Principles of Occupational Medicine**  
**30 points (first semester)**  
The general principles of occupational medicine including occupational epidemiology; occupational biostatistics and critical appraisal; rehabilitation and resettlement; accidents at work; occupational mental health and sickness absence; ergonomics, occupational overuse injury and back injuries, manual handling overuse injuries; occupational toxicology; occupational exposure and specific organ health effects; heat and cold.
- ④ **AVMX 716 Clinical Occupational Medicine**  
**30 points (second semester)**  
Occupational noise; lighting and vision; radiation and electrical hazards at work; occupational lung disorders; occupational allergy, asthma and dermatitis; occupational cancer; shift work; occupational hygiene; occupational diving and compressed air at work.
- ④ **AVMX 717 Medical Logistics in Aeromedical Transport**  
**30 points (first semester)**  
Historical perspectives, search and rescue; primary aeromedical retrieval; secondary aeromedical retrieval and transfers; logistics of long-reach retrieval; tertiary aeromedical transport; logistics of international repatriation; essential preflight considerations; working as a team.
- ④ **AVMX 718 Operational Aspects of Aeromedical Transport**  
**30 points (second semester)**  
Overview of aeromedical transport worldwide; modes of medical transport; helicopters used for medical transport; fixed wing aircraft used for medical transport; aircraft safety – the risks of air travel; aeromedical equipment; operational limitations and constraints; concepts in altitude physiology; further physiology of transport.
- ④ **AVMX 719 Aeromedical Studies for Nurses and Paramedics**  
**30 points (not offered 2013, expected to be offered 2014)**  
Aviation physiology; the impact of the stresses of flight on the human body; the aviation worksite and related issues; patient care (pre-flight, in-flight and post-flight); professional and medico-legal aeromedical issues.
- ④ **AVMX 720 Critical Analysis in Aeromedical Retrieval and Transport**  
**30 points (not offered 2013, expected to be offered 2014)**  
Critical analysis of an issue in flight nursing or aero/paramedical care; a personal programme of study based in critical evaluation of the student's own clinical role and working environment.
- ④ **AVMX 721 Clinical Care in the Air**  
**30 points (not offered 2013, expected to be offered 2014)**  
Relating physiology, pathology and flight; general clinical concerns; cardiovascular patients; orthopaedic and trauma patients; burn patients; obstetric and gynaecological patients; aeromedical transport of children; psychiatric patients and miscellaneous conditions; critical care in the air.

- AVMX 722 Organisation of Aeromedical Systems**  
**30 points (not offered 2013, expected to be offered 2014)**  
 Establishing an aeromedical service; administration of an aeromedical service; standards, quality and quality control; international differences in approach; insurance and travel assistance; personnel selection and training; medico-legal issues; military AME; major incident response.
  - AVMX 723 Managing Occupational Medicine**  
**30 points (not offered 2013, expected to be offered 2014)**  
 Disability assessment; workplace assessment; communication, consultation and negotiation; risk assessment and risk communication; funding and management of occupational health; occupational medicine and the law; research and medical informatics in occupational medicine; hazard control and safety in occupational medicine; quality assurance in occupational medicine.
  - AVMX 724 Health and Industry**  
**30 points (not offered 2013, expected to be offered 2014)**  
 Mining; nuclear power and other radiation work; agriculture and silviculture; chemical industries; international business; petrochemical industries including oil and gas exploration; office work, general manufacturing and technical trades; hazardous employment environmental health.
  - AVMX 780 Research Project**  
**30 points (each semester)**  
 A supervised, original project of up to 10,000 words in aviation medicine or a related field, usually applied to the student's area of practice, for example, a systematic review, pilot study, audit or case study.
  - AVMX 785 Research Methods**  
**30 points (first semester)**  
 Qualitative research, quantitative research, ethical issues, survey methods, quantitative data analysis, statistics, types of data, data presentation, critical appraisal, research frameworks, comparison of methodologies, designing a research project.
- Note: The following papers are offered in even numbered years i.e. 2014, 2016 etc. Semester One: AVMX 711, 721, 723. AVMX 714, 722, 724.
- The following papers are offered in odd numbered years i.e. 2013, 2015 etc. Semester One: AVMX 713, 715, 717. Semester Two: AVMX 712, 716, 718.

#### Further information

Katherine Harris  
 Occupational and Aviation Medicine Unit  
 Department of Medicine  
 University of Otago, Wellington  
 PO Box 7343, Wellington 6242  
 Tel 04 385 5590  
 Email [katherine.harris@otago.ac.nz](mailto:katherine.harris@otago.ac.nz)  
 Web [www.otago.ac.nz/aviation\\_medicine](http://www.otago.ac.nz/aviation_medicine)

## OCCUPATIONAL HEALTH AND SAFETY

Training is offered in occupational health and safety for health science and other graduates who may wish to pursue a career in health and safety and for those who may be already working in the field.

### PROGRAMMES OF STUDY

#### *Postgraduate Diploma in Health Sciences (PGDipHealSc) endorsed in Occupational Health*

The Postgraduate Diploma in Health Sciences (PGDipHealSc) endorsed in Occupational Health consists of four papers (OCCX 401, OCCX 402, an approved research methods paper and one other approved paper).

#### *Postgraduate Certificate in Health Sciences (PGCertHealSc) endorsed in Occupational Health*

The Postgraduate Certificate in Health Sciences (PGCertHealSc) endorsed in Occupational Health consists of two compulsory papers (OCCX 401 and OCCX 402).

The following papers are available:

#### *OCCX 401 Occupational Health* **30 points (first semester)**

Introduction to occupational health, risk assessment, diseases caused by workplace hazards, ergonomics and rehabilitation.

#### *OCCX 402 Occupational Safety* **30 points (second semester)**

Legislation and the workplace; occupational hygiene and toxicology; safety resources; principles of safety management; accident theory and prevention; occupational health and safety training methods.

OCCX 401 and 402 each require a study weekend in Dunedin focusing on practical skills such as worksite assessment, audiometry, spirometry and site visits.

#### Further information

Catherine Adamson  
 Secretary  
 Department of Preventive and Social Medicine  
 Dunedin School of Medicine  
 University of Otago  
 PO Box 913, Dunedin 9054  
 Tel 03 479 7202  
 Fax 03 479 7298  
 Email [catherine.adamson@otago.ac.nz](mailto:catherine.adamson@otago.ac.nz)

## OCCUPATIONAL MEDICINE

Programmes are offered for general practitioners interested in occupational medicine and for those who wish to pursue a full-time career in the discipline.

### PROGRAMME OF STUDY

#### *Postgraduate Diploma in Industrial Health (DIH)*

The Postgraduate Diploma in Industrial Health (DIH) offers occupational health training to registered medical practitioners.

The following papers are available:

#### *INDX 701 Introduction to Occupational Medicine* **30 points (first semester)**

The specialist role of the occupational physician, clinical skills, introduction to the workplace. The managerial role, legislation, medico-legal issues and workplace assessment.

### **INDX 702 Clinical Occupational Medicine**

**30 points (second semester)**

Basic and specialist clinical skills to diagnose, assess and advise on disease and injury in relation to work.

### **INDX 703 Assessment and Control of Occupational Hazards**

**30 points (not to be offered in 2013, expected to be offered in 2014)**

Concepts of toxicology and occupational hygiene. Workplace identification, measurement, assessment and control of occupational hazards.

### **INDX 704 Research Methods in Occupational Health**

**30 points (not to be offered in 2013, expected to be offered in 2014)**

Informatics, epidemiology and biostatistics to prepare for a research project and to interpret and evaluate research affecting occupational medicine.

INDX701, INDX702, INDX703 and INDX704 each require a study weekend in Dunedin focusing on practical and clinical skills.

#### **Further information**

Associate Professor David McBride  
Senior Lecturer in Occupational Health  
Department of Preventive and Social Medicine  
Dunedin School of Medicine  
University of Otago  
PO Box 913, Dunedin 9054  
Tel 03 479 7208  
Fax 03 479 7298  
Email david.mcbride@otago.ac.nz

## **OPHTHALMOLOGY**

The Department of Medicine, Ophthalmology section, offers a diploma for medical graduates with at least two years' experience who either want to embark on a career in ophthalmology, or are in a recognised training programme and wish to enhance their understanding of the ophthalmic basic sciences.

#### **PROGRAMME OF STUDY**

##### **Postgraduate Diploma in Ophthalmic Basic Sciences (PGDipOphthBS)**

The Postgraduate Diploma in Ophthalmic Basic Sciences (PGDipOphthBS) consists of four 30-point papers which can be taken full-time over a year. Part-time students have up to five years to complete the diploma.

The following papers are available:

##### **OPHX 801 Ophthalmic Anatomy**

**30 points (each semester)**



Deals with anatomical knowledge for a practising ophthalmologist and includes ocular, orbital, relevant head and neck anatomy and neuroanatomy.

##### **OPHX 802 Ophthalmic Physiology**

**30 points (each semester)**



Covers physiological aspects of ophthalmology including psychophysical testing, patient examination techniques, the physiological basis of visual processing, ocular biochemistry and eye movements.

##### **OPHX 803 Ophthalmic Optics**

**30 points (each semester)**



Deals with aspects of optics relevant to a practising ophthalmologist. It includes physical and geometrical optics, physiological optics, instruments, ophthalmic examination techniques and optical disorders of the eye.

### **OPHX 804 Practical Ophthalmic Basic Sciences**

**30 points (June – July)**

Covers the practical application of ophthalmic physiology, ophthalmic anatomy and ophthalmic optics. Students practise clinical skills with relevant equipment, increase their knowledge and understanding of surgical and gross anatomy, and develop expertise in psychophysical testing. Taught at a three-week course in Dunedin.



### **OPHX 805 Ocular Genetics**

**30 points (each semester)**

This paper deals with the mechanisms of genetics and their significance to ophthalmic practice. It covers the basic principles of, and recent developments in, ocular genetics and gene therapy.

OPHX 801, 802, 803 and 805 require internet access as they use web-based teaching with weekly "lectures" on Oceanbrowser. Teaching is based on the Royal Australian and New Zealand College of Ophthalmologists' curriculum which has been extended to include clinical correlations where appropriate. OPHX 804 is run in three consecutive one-week blocks in Dunedin.

#### **Further information**

Associate Professor Gordon Sanderson  
Ophthalmology Section, Medical and Surgical Sciences  
Dunedin School of Medicine  
University of Otago  
PO Box 913, Dunedin 9054  
Tel 03 474 7970  
Fax 03 474 7628  
Email gordon.sanderson@otago.ac.nz

Application inquiries to:

Jan Brosnahan  
Course Administrator, Medicine Department  
Dunedin School of Medicine  
University of Otago  
PO Box 913, Dunedin 9054  
Tel 03 474 7007 extension 8510  
Fax 03 474 7641  
Email jan.brosnahan@otago.ac.nz

## **PAIN AND PAIN MANAGEMENT**

This suite of programmes is offered to all health professionals, including doctors, nurses, physiotherapists, podiatrists, occupational therapists, psychologists, osteopaths, and chiropractors.

Pain and Pain Management is a discipline that has encouraged an enormous amount of research, knowledge and specialisation in the last 10 or more years. In New Zealand we now have a College of Pain Medicine. While the management of acute pain generates reasonable clinical results, the management of some aspects of chronic pain remains a significant clinical challenge. The overall purpose of this programme is to provide an insight into current knowledge and theory regarding the generation of pain states, and to examine the potential for therapeutic outcome.

#### **PROGRAMMES OF STUDY**

##### **Master of Health Sciences (MHealSc) endorsed in Pain and Pain Management**

The MHealSc endorsed in Pain and Pain Management is for registered medical practitioners and allied health professionals who wish to study pain and its management to master's level. It is approximately a four-year programme, depending on available study time. It contains a suite of distance-taught papers to the value of 240 points, and includes a compulsory research methods paper and a supervised research project.



### ***Postgraduate Diploma in Health Sciences (PGDipHealSc) endorsed in Pain and Pain Management***

The PGDipHealSc endorsed in Pain and Pain Management is for registered medical practitioners and allied health professionals who wish to undertake the study of pain and its management to diploma level. It is a two to four-year programme, containing a suite of distance-taught papers to the value of 120 points.

### ***Postgraduate Certificate in Health Sciences (PGCertHealSc) endorsed in Pain and Pain Management***

The Postgraduate Certificate in Health Sciences endorsed in Pain and Pain Management comprises four compulsory papers to the value of 60 points. It may be completed in one to two years.

The following papers are available:

#### ***MSMX 704 Introduction to Pain 15 points (first semester)***

An overview of the current understanding of pain as a multi-dimensional phenomenon, including pain concepts and history; the neuropathophysiology of peripheral and central pain mechanisms; pain measurement; and the psychological, social and economic aspects of both acute and chronic pain.

#### ***MSMX 708: Introduction to Pain Management 15 points (second semester)***

Current understanding of the best practice principles for the management and treatment of all forms of musculoskeletal pain and dysfunction, including modern psychosocial approaches to pain therapy.

#### ***MSMX 711 Pain Assessment 15 points (second semester)***

This paper complements the two pain papers, MSMX 704 and MSMX 708. It provides an overview of clinical pain assessment in the context of New Zealand society; principles, procedures and physical resources. It includes the economic and health effects of pain on the New Zealand workforce.

#### ***PAIX 701 Neurobiology of Pain 15 points (first semester)***

The current understanding of the various biomedical modalities used to treat all types of pain states, including acute and chronic pain, regional pain states, neuropathic pain and its subtypes, and central pain syndromes.

Prerequisite: MSMX 704

#### ***PAIX 702 Biomedical Pain Management 15 points (second semester)***

The current understanding of the various biomedical modalities used to treat all types of pain states, including acute and chronic pain, regional pain states, neuropathic pain and its subtypes, and central pain syndromes.

Prerequisite: MSMX 708

#### ***PAIX 703 Psychosocial and Cultural Aspects of Pain 15 points (second semester)***

The influence of psychosocial factors on both acute and chronic pain including developmental factors, gender, cultural aspects, as well as cognitive, affective and motivational aspects.

Other papers will be introduced in due course.

### **Further information**

Veronica McGroggan  
Departmental / Programmes Manager  
Department of Orthopaedic Surgery and Musculoskeletal Medicine  
University of Otago, Christchurch  
PO Box 4345, Christchurch 8140  
Tel 03 364 1086  
Fax 03 364 0909  
Email [veronica.mcgroggan@otago.ac.nz](mailto:veronica.mcgroggan@otago.ac.nz)  
Web [www.uoc.otago.ac.nz/departments/MSM](http://www.uoc.otago.ac.nz/departments/MSM)

Dr Jim Borowczyk  
Academic Co-ordinator  
Department of Orthopaedic Surgery and Musculoskeletal Medicine  
University of Otago, Christchurch  
PO Box 4345, Christchurch 8140  
Tel 03 364 1086  
Fax 03 364 0909  
Email [jim.borowczyk@otago.ac.nz](mailto:jim.borowczyk@otago.ac.nz)  
Web [www.uoc.otago.ac.nz/departments/MSM](http://www.uoc.otago.ac.nz/departments/MSM)

### **PERINATAL MENTAL HEALTH**

An introduction to perinatal psychiatry and infant mental health for mental health professionals who wish to develop their theoretical and applied knowledge of the area.

### **PROGRAMME OF STUDY**

#### ***Postgraduate Certificate in Health Sciences (PGCertHealSc) endorsed in Perinatal Mental Health***

Two papers are required: PSMX 432 and PSMX 433.

#### ***PSMX 432 Introduction to Perinatal Psychiatry 30 points (first semester)***

This paper covers an outline of the full range of psychiatric disorders as they present during pregnancy and the first postnatal year. It includes the adaptive demands on the mother and family during the perinatal period. Applicants are expected to have had two years' postgraduate clinical experience. The paper is taught via four two-day block courses in Christchurch.

#### ***PSMX 433 Introduction to Infant Mental Health 30 points (second semester)***

This paper provides an understanding of normal and abnormal human brain development in utero and up to three years and how this relates to attachment and maternal mental health. Applicants are expected to have had two years' postgraduate clinical experience. The paper is taught via four two-day block courses in Christchurch.

### **Further information**

Judith Stone  
Departmental/Postgraduate Administrator  
Department of Psychological Medicine  
University of Otago, Christchurch  
PO Box 4345, Christchurch 8140  
Tel 03 372 0404  
Fax 03 372 0407  
Email [judith.stone@otago.ac.nz](mailto:judith.stone@otago.ac.nz)

## PHARMACY

Clinical pharmacy, whether practised in hospitals or community settings, is an evolving discipline focused on the safe, effective, rational and economic use of medicines. As the complexity of medicinal agents increases, there is a growing need for expert and independent advice on their usage. Pharmacists are well placed to offer such advice. Postgraduate programmes in pharmacy integrate pharmaceutical and clinical knowledge and help students communicate this knowledge effectively.

Most of the papers require attendance at weekend workshops. There are either one or two workshops per paper; to be held at one of the following venues: Auckland, Wellington or Dunedin. Workshop dates and venues are published on the School of Pharmacy web page: [www.otago.ac.nz/pharmacy/ppp](http://www.otago.ac.nz/pharmacy/ppp)

### PROGRAMME OF STUDY

#### *Postgraduate Certificate in Pharmacy (PGCertPharm) endorsed in Medicines Management*

Providing medicines information involves retrieving, integrating and evaluating information from a variety of sources and applying this to benefit patient outcomes. The certificate gives pharmacists skills to retrieve and analyse medicines information efficiently and accurately, and apply this in practice. The two papers of the certificate can also count towards the Postgraduate Diploma in Clinical Pharmacy.

#### *PHCX 541 Medicines Information 30 points (first semester)*

Drug information resources, information technology, literature searching and critical appraisal, practical applications.

#### *PHCX 542 Medicines Management 30 points (second semester)*

Clinical application of medicines information to benefit patients.

Corequisite/prerequisite: PHCX 541

Restrictions: These papers are limited to the following qualifications: PGCertPharm, MPharm, PGDipClinPharm.

Candidates must possess an appropriate health professional qualification or background acceptable to the School of Pharmacy.

### PROGRAMME OF STUDY

#### *Postgraduate Certificate in Pharmacy (PGCertPharm) endorsed in Social Pharmacy*

This provides a postgraduate qualification for students who wish to specialise in social pharmacy. Pharmacists and other health professionals work in a rapidly changing health sector and society. With the diversity of clients and changing expectations of health professionals, the programme aims to raise understanding of human behaviour, culture, politics and society and enable health professionals to provide quality care and have input into pharmaceutical and health sector policy.

#### *PHCX547 Medicines and Culture 30 points (second semester)*

Information sources and critical assessment; approaches to studying medicines; cultural understandings of health, illness and medicines; implications for practice.

Restrictions: These papers are limited to the following qualifications: PGCertPharm (Social Pharmacy), MPharm, PGDipClinPharm.

Available to health professionals. May not be offered if fewer than five students enrol.

### PROGRAMME OF STUDY

#### *Postgraduate Diploma in Clinical Pharmacy (PGDipClinPharm)*

Candidates for the diploma must hold the degree of Bachelor of Pharmacy, or have an equivalent qualification or experience acceptable to the Pro-Vice-Chancellor (Health Sciences) and be registered to practise as pharmacists in their country of residence.

Four of the following papers are required:

#### *PHCX 512 Advanced Clinical Pharmacy 30 points (first semester)*

This advanced paper considers problem solving, decision making, an in-depth knowledge of therapeutics and an ability to integrate information in the context of patient care in clinical pharmacy.

Corequisites/prerequisites: PHCX 522, PHCX 523 and PHCX 525

#### *PHCX 522 Applied Clinical Pharmacy 1 30 points (first semester)*

Medication in the treatment of diseases including cardiovascular and respiratory disorders, diabetes, and rheumatological, gastrointestinal, renal and hepatic disorders.

Corequisites/prerequisites: PHCX 541 and PHCX 542

#### *PHCX 523 Applied Clinical Pharmacy 2 30 points (second semester)*

Medication in the treatment of diseases including mental health, neurological, women's health, and dermatological disorders, infection, therapeutic drug monitoring and pharmacokinetics.

Corequisites/prerequisites: PHCX 541 and PHCX 542

#### *PHCX 524 Pharmacoeconomics and Drug Evaluation 30 points (first semester)*

Design and interpretation of clinical trials, techniques for drug use and evaluation/review, economic considerations in the use of medicines.

This paper may not be offered if fewer than 10 students enrol.

#### *PHCX 525 Core Clinical Pharmacy 30 points (full year)*

Medication in the treatment of diseases including cardiovascular, endocrine, mental health, infectious diseases and respiratory.

Restriction: PHCX 522, 523

Corequisites/prerequisites: PHCX 541 and PHCX 542

This paper may not be offered if fewer than five students enrol.

#### *PHCX 541 Medicines Information 30 points (first semester)*

Drug information resources, information technology, literature searching and critical appraisal, practical applications.

This paper may not be offered in the second semester if fewer than eight students enrol.

#### *PHCX 542 Medicines Management 30 points (second semester)*

Clinical application of medicines information to benefit patients.

Corequisite/prerequisite: PHCX 541

### **PHCY 5A Thesis**

#### **90 points (three semesters)**

The development, implementation and reporting of an original individual research project in the student's area of professional expertise or interest. The thesis corresponds to approximately nine months of full-time research.

### **PROGRAMME OF STUDY**

#### **Master of Clinical Pharmacy (MClinPharm)**

The Master of Clinical Pharmacy programme may be taken by students who have completed the Postgraduate Diploma in Clinical Pharmacy at an appropriate level. The master's programme consists of either two papers and a research dissertation, or the Research Methods paper plus a thesis (in this latter setting students must have previously passed the Advanced Clinical Pharmacy as part of the postgraduate diploma).

#### **PHCX 506 Research Methods**

##### **30 points (second semester)**

Critical evaluation and practical applications of quantitative and qualitative methods used in health science research.

#### **PHCX 512 Advanced Clinical Pharmacy**

##### **30 points (first semester)**

This advanced paper considers problem solving, decision making, an in-depth knowledge of therapeutics, and an ability to integrate information in the context of patient care in clinical pharmacy.

Corequisite/prerequisite: PHCX 522, PHCX 523 and PHCX 525

#### **PHCX 590 Dissertation**

##### **60 points (full year / each semester)**

The development, implementation and reporting of an original individual research project in the student's area of professional expertise or interest.

### **PROGRAMME OF STUDY**

#### **Postgraduate Certificate in Pharmacist Prescribing (PGCertPharm Presc)**

(Introduction subject to approval and enrolment numbers)

Candidates for the Certificate must hold the qualification of Postgraduate Diploma in Clinical Pharmacy, or have an equivalent qualification or experience acceptable to the Pro-Vice-Chancellor (Health Sciences) and be registered to practise as a pharmacist in their country of residence.

#### **PHCX601 Principles of Prescribing**

##### **30 points (first semester)**

This paper provides the theoretical underpinnings for pharmacists who wish to prescribe.

#### **PHCX602 Prescribing Practicum**

##### **30 points (second semester)**

This paper provides the practical application of prescribing in an experiential environment.

### **Further information**

Postgraduate Administrator

School of Pharmacy

University of Otago

PO Box 56, Dunedin 9054

Tel 03 479 7271

Fax 03 479 7034

Email [pharmacy.postgrad@otago.ac.nz](mailto:pharmacy.postgrad@otago.ac.nz)

## **PHYSIOTHERAPY**

The School of Physiotherapy offers distance learning papers towards a Postgraduate Certificate (PGCertPhty) and Diploma (PGDipPhty) endorsed in Acupuncture, Orthopaedic Manipulative Therapy (subject to approval), Neurorehabilitation, Occupational Health Physiotherapy and Mechanical Diagnosis and Therapy.

The School of Physiotherapy also offers a Master of Physiotherapy (MPhty) endorsed in Acupuncture, Orthopaedic Manipulative Therapy (subject to approval), Sports Physiotherapy, Neurorehabilitation, Occupational Health Physiotherapy and Mechanical Diagnosis and Therapy

### **The following papers are available:**

#### **PHTX 501 Biomedical Science in Physiotherapy**

##### **30 points (first semester)**

Integration of the applied, medical and clinical sciences that underpin the philosophy, examination and management practice in physiotherapy. Students will study topics appropriate to their clinical specialisation.

#### **PHTX 610 Research Methods (subject to approval)**

##### **30 points (each semester)**

Research design, evaluation, survey and qualitative methods.

#### **PHTX 530 Theoretical Constructs in Clinical Practice**

##### **30 points (second semester)**

Clinical practice structured to extend the physiotherapist's theoretical knowledge and reasoning skills and to develop a high advanced level of competence and critical evaluation in their specialised fields of practice.

#### **PHTX 535 Neurorehabilitation**

##### **30 points (second semester)**

Advanced level of knowledge, competence and skill in neurorehabilitation for practising physiotherapists.

#### **PHTX 539 Occupational Health Physiotherapy**

##### **30 points (second semester)**

Provides practising physiotherapists with specific knowledge and skills to apply in occupational health practice, including assessment, management, prevention and treatment of work related musculoskeletal disorders, and the role of government regulatory bodies and statutory authorities in occupational health practice.

#### **PHTX 540 Musculoskeletal Physiotherapy**

##### **30 points (second semester)**

The advanced study of physiotherapy assessment and management strategies for musculoskeletal dysfunction, including that of therapeutic exercise.

#### **PHTX 541 Manipulative Physiotherapy**

##### **30 points (first semester)**

Advanced study of clinical theory and practice in manipulative physiotherapy.

#### **PHTX 542 Sports Physiotherapy**

##### **30 points (first semester)**

Advanced study of clinical theory and practice in sports physiotherapy. This includes elements of injury mechanisms, principles of injury prevention, diagnosis, treatment and rehabilitation principles integrated with the clinical reasoning process.

***PHTX 543 Orthopaedic Manipulative Therapy (subject to approval)***

***30 points (first semester)***

Advanced study of clinical theory and practice in manipulative physiotherapy.

***PHTX 544 Foundations of Mechanical Diagnosis and Therapy***  
***30 points (second semester)***

Provides the clinician with the theoretical background, knowledge, skills and reasoning to make a diagnosis or classification. Enables the clinician to identify patients with spinal symptoms that do not fit the criteria for classification in posture dysfunction and derangement syndromes.

***PHTY 545 Special Topic***

***30 points (each semester)***

Study of clinical theory and practice in a specific area of physiotherapy.

***PHTX 548 Introduction to Musculoskeletal Acupuncture***  
***30 points (second semester)***

The theoretical basis of Acupuncture predominantly from a Western/scientific paradigm: critically review and evaluate acupuncture theory and practice in the management of musculoskeletal conditions.

***PHTX 650 Research Project (subject to approval)***

***30 points (each semester)***

A supervised, original research project of up to 10,000 words in a field of Physiotherapy usually applied to the student's area of practice (e.g. a systematic review, pilot study, audit, or case study).

***PHTX 590 Dissertation***

***60 points (each semester)***

The dissertation may comprise the design and implementation of a small research project, a case/case series, or a data-based clinical review under the supervision of a member of staff. A substantive report to an approved format will be the output from this paper.

**Further information**

School of Physiotherapy

University of Otago

PO Box 56, Dunedin 9054

Tel 03 479 6821

Fax 03 479 8414

Email nicola.clarke@otago.ac.nz

**PRIMARY HEALTH CARE**

Primary health care is concerned not only with primary presentation of symptoms and signs of possible ill health, but also with restoring, maintaining and improving the health of individuals and communities. The programmes offer primary health-care workers a deeper understanding of the structure, process and context of primary health care in New Zealand. Programmes provide formal nationally recognised qualifications for primary health-care workers and are open to students with a wide variety of backgrounds and qualifications. Prospective students should seek early advice on course structure.

**QUALIFICATIONS AVAILABLE**

***Postgraduate Certificate and Diploma in Primary Health Care (PGCertPHC and PGDipPHC).***

***Postgraduate Certificate (PGCertPHC) and***

***Postgraduate Diploma in Primary Health Care (PGDipPHC) endorsed in Long-term Condition Management***

***Master of Primary Health Care (MPHC)***

**PROGRAMME OF STUDY**

***Postgraduate Certificate and Diploma in Primary Health Care (PGCertPHC and PGDipPHC)***

The Postgraduate Certificate and Diploma in Primary Health Care (PGCertPHC and PGDipPHC) involves the core paper, First and Foremost – Primary Health Care (PRHX 701) and a selection of multidisciplinary papers.

The certificate requires 60 points, PRHX 701 and other approved papers worth at least 30 points.

The diploma requires 120 points, PRHX 701 and other approved papers worth at least 90 points.

***Postgraduate Certificate (PGCertPHC) and Diploma in Primary Health Care (PGDipPHC) endorsed in Long-term Condition Management***

These qualifications offer primary-care professionals and those working in integrated roles in the secondary and non-governmental organisations an opportunity to explore how health, social and community services can be better configured to meet the needs of people with long-term conditions.

The certificate requires 60 points, GENX709 and GENX711.

The diploma requires 120 points, GENX709, GENX711, PRHX 701 and 30 points from the elective papers below.

***PRHX 701 First and Foremost – Primary Health Care (core paper)***

***30 points (first semester)***

This paper explores how to anticipate, plan for and evaluate changes to the delivery of primary health care in New Zealand today. Taking a population-based approach, interdisciplinary and multi-agency collaboration, as well as the interdependence of the generalist and specialist roles in the context of health care delivery are discussed. There are two residential periods in Wellington.

***GENX 709 Long-term Condition Management***

***30 points (first semester)***

Principles of ongoing, culturally appropriate long-term condition management, including implementing change in clinical practice and ways of delivering care, complexity in long-term condition management, best use of clinical information systems, patient self-management approaches, integrated care across the sectors, and population-based approaches. There are two residential periods in Wellington.

***GENX 731 Supporting Healthier Lifestyles: Core Principles***  
***15 points (first semester)***

This paper utilises evidence based strategies and introduces a patient-focused, self-efficacy approach to support patients achieve changes in lifestyle behaviours. There is one residential period in Wellington.

***GENX 733 Tackling Obesity – Supporting Healthier Lifestyles***  
***15 points (first semester)***

This paper explores evidence based strategies and interventions designed to address overweight and obesity. It overviews effective primary care management approaches to support patients to achieve health loss through healthier lifestyle behaviours. There is one residential period in Wellington.

***GENX 713 Travel Medicine 1: Introductory Concepts (subject to approval)***

***30 points (first semester)***

This paper provides an overview of travel medicine as a specialty area of practice, will cover the principles of preparing the intending traveller with a focus on prevention, and a detailed knowledge of vaccine preventable illness and travel vaccines. Students will be informed of relevant resources

available for keeping up to date in this field of increasing publications relevant to clinical practice. There are two residential periods in Wellington.

***GENX 719 Tropical Infectious Diseases***  
***30 points (first semester)***

This paper is designed to provide suitably qualified health professionals with theoretical and practical knowledge sufficient to manage tropical diseases. The paper is of interest to any health professional whose practice brings them into contact with travellers, migrants or those who plan to work in tropical countries. Topics include relevant tropical diseases (arboviruses, malaria, helminthic infections, tuberculosis, HIV); their epidemiology, presentation, diagnosis, treatment and management both in developing countries and in New Zealand. There are two residential periods in Wellington.

***GENX 702 Sexual and Reproductive Health***  
***30 points (second semester)***

This paper is relevant for anyone working in the field of sexual and reproductive health in any primary-care setting including general practice, school, student health and family planning clinics. It is especially suitable for GPs, practice nurses, other primary care nurses, pharmacists. It introduces and builds on the principles of sexual and reproductive health, including population health at national and international levels, and concepts about safe and effective provision of care. It gives practical advice about diagnosis, management and monitoring in a primary care setting. It assumes clinical experience working as a health professional, and builds on that experience with a strong interdisciplinary focus. There are two residential periods in Wellington.

***GENX 710 Mental Health and Illness in Primary Care***  
***30 points (second semester)***

The paper is especially suitable for health professionals working in primary health-care settings where interdisciplinary practice is the norm. Mental health issues are an intrinsic component of primary health care delivery and are increasingly managed in community settings. This interdisciplinary paper is intended to give primary health-care professionals a sound basis for the recognition and management of mental health issues that commonly present in primary health-care settings. It provides a basis for evaluation, care planning and delivery for patients with mental health issues. It reviews current mental health status data and policy directions for primary care-based service delivery and workforce development. There are two residential periods in Wellington.

***GENX 720 Refugee and Migrant Health***  
***30 points (second semester)***

This paper is designed to provide health professionals with the theoretical and practical knowledge necessary to manage the health needs of refugee and migrant groups. It also covers the needs of and challenges facing those working in aid projects. The principles of competent cross-cultural practice will be covered. Working with interpreters and with groups for whom English is a second language forms an essential part of the course. There are two residential periods in Wellington.

***GENX 734 Addiction and Drug Abuse – Supporting Healthier Lifestyles***  
***15 points (second semester)***

This paper addresses the support required in primary/integrated care health-care settings to implement evidence-based strategies for managing alcohol, tobacco and other substance or behavioral addiction. There is one residential period in Wellington.

***GENX 735 Challenging Conversations - Supporting Healthier Lifestyles***

***15 points (second semester)***

This paper explores the interactional strategies used by patients and health professionals to manage conversations about lifestyle behaviours / lifestyle behaviour change in the primary care setting. There is one residential period in Wellington.

***HASX 417 Health Sciences Research Methods***  
***30 points (full year)***

This paper provides an introduction to quantitative and qualitative research methods used in the health sciences. Critical appraisal and literature review skills are an integral part of the course. On completion of the course, students will be able to design and create a master's-level research project under supervision. There are three on-campus block courses in Wellington during the paper.

***GENX 732 Sleep Management - Supporting Healthier Lifestyles***

***15 points (not offered 2013, expected to be offered second semester 2014)***

This paper addresses sleep disorders commonly associated with health risk factors and illnesses focusing on guidelines for primary/integrated care health-care setting. There is one residential period in Wellington.

***GENX 704 Te Tūhauora Māori Health***

***30 points (not offered 2013, expected to be offered second semester 2014)***

This introductory paper is offered to those working in any area of primary health care. It covers a range of topics, including the historical, social and political contexts of Māori health, the Treaty of Waitangi, Māori health status and priorities, frameworks for assessment and intervention, health initiatives, and models for care delivery. There are two residential periods in Wellington.

***GENX 711 Long-term Condition Management (Advanced)***  
***30 points (not offered 2013, expected to be offered second semester 2014)***

Principles of ongoing, culturally appropriate long-term condition management, including an understanding of complexity, patient self-management, integrated care between primary, secondary and community non-governmental services, interpersonal skills, population-based approaches, and effective change management. There are two residential periods in Wellington.

Prerequisite: GENX 709

***PRHX 702 Expedition and Wilderness Medicine***  
***30 points (not offered 2013, expected to be offered second semester 2014)***

This paper is designed to provide participants with an understanding of planning and preparation for activities in the wilderness environment, both within New Zealand and overseas, and medical problems associated with the wilderness environment and the special considerations of providing medical care in an outdoor environment including risk assessment and resource management. There are two residential periods in Wellington.

## PROGRAMME OF STUDY

### *Master of Primary Health Care (MPHC)*

The Master of Primary Health Care (MPHC) degree provides an appropriate advanced multidisciplinary qualification for students who have completed a Postgraduate Diploma in Primary Health Care including approved research methods paper(s). Following this either a 120-point thesis or a 90-point portfolio plus one final paper can be undertaken. Graduates have an advanced understanding of the nature and practice of primary health care, advanced clinical training in personally selected areas of practice, experience in working with other health professionals involved in primary health care, and the ability to set up and carry out relevant research independently.

#### **Further information**

Postgraduate Co-ordinator (Wellington papers)  
Department of Primary Health Care and General Practice  
University of Otago, Wellington  
PO Box 7343, Wellington 6242  
Tel 04 385 5995  
Email [primarycare.distance@otago.ac.nz](mailto:primarycare.distance@otago.ac.nz)  
Web [www.otago.ac.nz/studyprimaryhealthcare](http://www.otago.ac.nz/studyprimaryhealthcare)

## PUBLIC HEALTH

The following distance paper will be valuable for health workers, public health practitioners and those interested in public health policy and research, public health physicians, medical officers of health, health promoters and health protection officers, policy staff of the Ministry of Health, health officers of local authorities, as well as those lawyers keen on extending their skills in the health sector. It is offered within the Postgraduate Diploma in Public Health programme, but can also be taken as a stand-alone paper or as a component of a Postgraduate Certificate in Public Health.

### *PUBX 710 Public Health Law and Public Health Ethics 30 points (second semester)*

Covers the framework, scope and content of core public health law in New Zealand; the impact of international law; and public health ethics. These concepts are applied to a wide range of substantive areas of public health law, including those relevant to communicable disease, environmental health, screening, public health emergencies, border health protection, tobacco control, food and nutrition, illicit drugs, radiation safety and alcohol. Basic legal concepts ("law for non-lawyers") are discussed, as well as risk in public health law, enforcement, and trans-Tasman developments. Taught from Wellington. Note: Includes two sets of two-day workshops, both in Wellington.

No examination: internal assessment

#### **Further information**

Louise Delany  
Department of Public Health  
University of Otago, Wellington  
PO Box 7343  
Wellington South, New Zealand  
Tel 64 4 385 4833  
Fax 64 4 389 5319  
Email [louise.delany@otago.ac.nz](mailto:louise.delany@otago.ac.nz)

## RADIATION THERAPY

This programme provides postgraduate education in support of the professional development and advanced scopes of practice for radiation therapists. These papers contain both theoretical and clinical aspects and are offered by the Department of Radiation Therapy at the University of Otago, Wellington.

## PROGRAMME OF STUDY

### *Postgraduate Certificate in Health Sciences (PGCertHealSc) endorsed in Radiation Therapy Advanced Practice*

The Postgraduate Certificate in Health Sciences (PGCertHealSc) endorsed in Radiation Therapy Advanced Practice consists of RADX 401 and either RADX 402 or RADX 403. The papers will be delivered at an advanced level for radiation therapy graduates who have had at least two years clinical experience.

The papers will develop radiation therapy knowledge and skills in the areas of scientific basis for radiation therapy treatment, evidenced based treatments and toxicities, symptom management, site-specific techniques, brachytherapy, psychosocial issues and integrate this knowledge with reflection on clinical practice.

### *RADX 401 Radiation Therapy Advanced Practice I 30 points (first semester)*

Cancer cell biology, radiobiology, chemotherapy, hormone therapy, immunotherapy. Evidence-based treatment and toxicities of breast, prostate and abdomino-pelvic regions. Symptom management. Clinical portfolio. The course is distance taught with a two-day residential workshop in Wellington.

### *RADX 402 Radiation Therapy Advanced Practice II 30 points (second semester)*

Quality of life assessment, supportive cancer care, cultural safety. Evidenced based treatment and toxicities of head and neck, thorax, and central nervous system. Symptom management. Clinical portfolio. The course is distance taught with a two-day residential workshop in Wellington

Prerequisite: RADX 401

### *RADX 403: Brachytherapy Principles and Practice\* 30 points (second semester)*

Historical development, sources, specifications, radiobiology, high/low dose rate, interstitial and intracavity systems, national and international criteria, radiation safety. (\*Subject to approval).

#### **Further information**

[www.otago.ac.nz/wellington/departments/radiationtherapy/postgraduate/index.html](http://www.otago.ac.nz/wellington/departments/radiationtherapy/postgraduate/index.html)

Programme Administrator  
Department of Radiation Therapy  
University of Otago, Wellington  
PO Box 7343,  
Wellington South 6242  
Tel 04 385 5475  
Fax 04 385 5375  
Email [rtenquiries.uow@otago.ac.nz](mailto:rtenquiries.uow@otago.ac.nz)



# Profile

## NUNO HERMITERIO

Certificate in Health Sciences (Radiation Therapy Advanced Practice)

“Staying motivated is definitely the biggest challenge when you’re learning via distance.”

“I’m originally from Lisbon, Portugal. I finished my bachelor’s degree in Radiation Therapy in 2006 and moved immediately to Switzerland, where I worked for two and a half years. The salary was great and it was close to home, but Switzerland was not my cup of tea. So I packed my bags and flew to Auckland, where I have been working since January 2010 as a full-time employee of the Auckland District Health Board.

“Every year students spend time in our department hoping we can work magic and help them qualify. As a foreigner, I felt I needed to understand the way Radiation Therapy is taught in New Zealand in order to do a better job teaching them. Plus this further qualification might open some doors and help me progress in my career. I feel I’m also somehow redeeming myself because I could’ve tried much harder in my undergraduate days!

“Staying motivated is definitely the biggest challenge when you’re learning via distance.

Being independent and in charge of my own time is a good thing, but after eight hours of work the last thing I want to do is shut myself in a room in front of the computer. However, my co-worker is studying with me, so we keep each other motivated over a packet of gingernuts and cups of tea.

“With no classes it can be tricky understanding some concepts, but the lecturers are all very helpful and supportive, and are available via e-mail and mobile phone. They make sure we understand what’s expected of us and that we’re on the right track. I’ve also used the University Library’s services to search for articles and, when I couldn’t print or access them, they e-mailed them to me within 24 hours.

“My goal? To be the best radiation therapist I can be and to progress into a leadership role as a senior radiation therapist.”

## REHABILITATION

The Rehabilitation Teaching and Research Unit (RTRU) promotes best practice in rehabilitation. The postgraduate programmes provide clinically-oriented academic training in rehabilitation for a wide range of health and related professions. The emphasis is on acquiring both practical skills and theoretical knowledge from an evidence-based perspective. Participants should become more effective in dealing with rehabilitation problems in clinical practice as well as widening their perspective on the application of rehabilitation principles in interdisciplinary teams. Critical appraisal skills are taught as part of the programme and students may be supported in developing their postgraduate study to master's or PhD level.

### PROGRAMMES OF STUDY

#### ***Postgraduate Certificate in Health Sciences (PGCertHealSc) endorsed in Clinical Rehabilitation***

Comprises two papers, REHX 701 and REHX 710, taught over one year, using a combination of audioconferences, readings, and assignments, plus a residential seminar involving lectures, problem-solving sessions and workshops in Wellington each semester. To undertake this certificate, students must be employed for 0.8 FTE by a district health board (DHB) or publicly funded non-government organisation (NGO). Students will require access to computer and internet facilities. Special fees subsidies and benefits available with this certificate. Students are required to have internet access as discussion groups and reading material are available online on a web-based teaching resource that is used extensively in most papers.

#### ***Postgraduate Certificate in Rehabilitation (PGCertRehab)***

Comprises the core paper REHX701, plus one other REHX paper (excluding 710 and 780), and is taught using a combination of audioconferences, readings and assignments, plus a residential seminar involving lectures, problem-solving sessions and workshops in Wellington each semester. Students are required to have internet access as discussion groups and reading material are available online on a web-based teaching resource that is used extensively in most papers.

#### ***Postgraduate Diploma in Rehabilitation (PGDipRehab)***

Consists of four papers, REHX 701 AND one of REHX 710, 712, or approved research methods paper, AND two of REHX 703, 704, 706, 707, 709, 713, 714, 715 taught by a combination of audioconferences, readings and assignments, and a residential seminar involving lectures, problem-solving sessions and workshops in Wellington each semester. Students are required to have internet access as discussion groups and reading material are available online on a web-based teaching resource that is used extensively in most papers.

#### ***Master of Health Sciences (MHealSc) endorsed in Rehabilitation***

The degree of Master of Health Sciences (MHealSc) endorsed in Rehabilitation is also available for students seeking training in rehabilitation research.

The following papers are available:

#### ***REHX 701 Rehabilitation Principles (compulsory paper for PGCertHealSc, PGCertRehab and PGDipRehab)*** ***30 points (first semester)***

Rehabilitation practice models including the International Classification of Functioning – Disability and Health (ICF), consumer perspectives, cultural issues, ethical issues, rehabilitation team dynamics, goal setting, compensation systems and understanding the New Zealand funding structure of rehabilitation. This paper addresses the core themes of rehabilitation and aims to establish a solid base to build on in future papers.

#### ***REHX 703 Musculoskeletal Rehabilitation***

***30 points (first semester: offered alternate even years 2012, 2014 etc)***

This paper aims to develop a more in-depth understanding of rehabilitation of a range of musculoskeletal disorders. Sufficient detail is provided for students without medical training to gain an understanding of assessment and treatment strategies. Commonalities between different musculoskeletal disorders, especially chronic pain management approaches, will be emphasised. Evaluation of treatment efficacy will be covered in some detail, to answer the question, "Does it work?".

#### ***REHX 704 Neurological Rehabilitation***

***30 points (first semester: offered alternate even years 2012, 2014 etc)***

Assessment and management of neurological conditions including stroke, subarachnoid haemorrhage, multiple sclerosis, traumatic brain injury, spinal cord injury, Parkinson's disease, spasticity and urinary incontinence.

#### ***REHX 706 Work Rehabilitation***

***30 points (second semester)***

Understanding the workplace, workers and employers, and the use of modern management techniques to reduce worksite injury and promote early return to work.

#### ***REHX 707 Rehabilitation for the Older Adult***

***30 points (first semester: offered in alternate odd years, 2013, 2015 etc)***

Management of disability and activity limitation and participation restriction in the older adult, including depression and dementia, fractures, multiple problems, dying and death.

#### ***REHX 709 Family Systems and Rehabilitation***

***30 points (first semester: offered alternate even years, 2012, 2014 etc)***

The aim of this paper is to increase students' ability to think systemically, to assess the family system and to have a firm knowledge base for working with whole or parts of families.

#### ***REHX 710 Clinical Rehabilitation (compulsory paper for PGCertHealSc)***

***30 points (second semester)***

This paper investigates current clinical rehabilitation practice through single case studies and clinical audit. This is an applied paper where students are expected to demonstrate the integration of rehabilitation theory and research evidence into the management of clients/patients at both an individual and service level. This paper is available to PGCertHealSc students only.

#### ***REHX 712 Evaluating Rehabilitation: Challenges and Opportunities (compulsory paper for PGCertRehab and PGDipRehab)***

***30 points (second semester)***

Integration of the students' reflections on their experience as clinician, consumer or funder/manager with research findings to evaluate contemporary and challenging questions about rehabilitation process and outcomes. This paper will increase the student's ability to synthesise research and practical knowledge in their own field of expertise.

#### ***REHX 713 Goal Setting and the Therapeutic Relationship***

***30 points (first semester: offered in alternate odd years, 2013, 2015 etc)***

This paper will provide a critical, evidence-based examination of the process of goal setting in rehabilitation. Issues covered include, application of goal and goal-related theories from other fields (psychology, education, sports) to rehabilitation, ethics in goal planning for rehabilitation, motivation and adherence, identity and self-regulation, and using goals for person-centred outcome evaluation.



### **REHX 714 Personal and Psychological Factors in Rehabilitation**

#### **30 points (second semester)**

In this paper students will examine psychological factors influencing rehabilitation by considering the “personal factors” component of the WHO’s International Classification of Functioning scheme. The paper aims to enhance students’ understanding of the broader contextual aspects of rehabilitation.

### **REHX 715 Cardiac and Pulmonary Rehabilitation**

#### **30 points (first semester: offered in alternate odd years, 2013, 2015 etc)**

An opportunity for an in-depth investigation of the theory, research and practice of rehabilitation and self-management for people with cardiac or pulmonary disease. This paper would be suitable for any health professional working with people with cardiac and/or respiratory conditions who is interested in a multidisciplinary approach to their patient’s care and rehabilitation.

### **REHX 780 Research Project**

#### **30 points (full year, each semester)**

Supervised research project. This paper is offered to students wishing to pursue a master’s programme, either by thesis or by coursework. Students are strongly advised to contact the RTRU before enrolling in this paper.

#### **Further information**

Programme Administrator  
Rehabilitation Teaching and Research Unit  
Department of Medicine  
University of Otago, Wellington  
PO Box 7343, Wellington 6242  
Tel 04 385 5591  
Email [rtru@otago.ac.nz](mailto:rtru@otago.ac.nz)

## **REPRODUCTIVE MENTAL HEALTH**

This programme is designed for health-care professionals from a broad range of settings who work with women and their families during the reproductive years, in particular those who have existing mental illness or are at risk of developing subsequent mental health issues.

#### **PROGRAMME OF STUDY**

##### **Postgraduate Certificate in Health Sciences (PGCertHealSc) endorsed in Reproductive Mental Health**

The Postgraduate Certificate in Health Sciences (PGCertHealSc) endorsed in Reproductive Mental Health comprises:

One compulsory paper: PSMX 438 Reproductive Mental Health and one further approved 30 point paper.

Some recommended examples are PSMX 401, PSMX 432, PSMX 433, PSMX 436, REHX 709, BITX 401, BITX 405.

Refer to paper descriptions and semester availability shown elsewhere in this prospectus, or contact the department. (details below)

##### **PSMX 438 Reproduction and Loss**

#### **30 points (second semester)**

This paper provides an outline of normal and assisted reproduction from conception through to childbirth and the relationship between psychiatric disorders and expected/unexpected losses during the reproductive cycle (infertility, miscarriage, termination of pregnancy, still birth). It also outlines the psychological and psychiatric assessment and treatment of women and their families during this period.

#### **Further information**

Judith Stone  
Departmental/Postgraduate Administrator  
Department of Psychological Medicine  
University of Otago, Christchurch  
PO Box 4345, Christchurch 8140  
Tel 03 372 0404  
Fax 03 372 0407  
Email [judith.stone@otago.ac.nz](mailto:judith.stone@otago.ac.nz)

## **SPORT AND EXERCISE MEDICINE**

Although many health professionals find that sport and exercise medicine forms a significant part of their work, most practitioners have minimal or no formal training at an undergraduate or postgraduate level. This programme reflects the multidisciplinary nature of sport and exercise medicine and offers training through the Dunedin School of Medicine, the Schools of Medicine and Health Sciences in Christchurch and Wellington, the Schools of Physical Education and Physiotherapy, and the Department of Human Nutrition. All applications for admission to the programme must be approved by the Academic Co-ordinator prior to enrolment.

#### **PROGRAMME OF STUDY**

##### **Postgraduate Diploma in Sport and Exercise Medicine (PGDipSEM)**

The Postgraduate Diploma in Sport and Exercise Medicine (PGDipSEM) is for graduates in medicine, physiotherapy, physical education, human nutrition, pharmacy or sciences, or those with a comparable qualification in the health-care professions. It requires the accumulation of 120 points. Given the diversity of candidates’ backgrounds, there is only one compulsory generic paper, SPMX 701 Issues in Sports Medicine. Candidates may then choose their remaining 90 points from a selection of papers. This will allow students to complete a postgraduate diploma with an emphasis on a specific area of expertise.

Note: Teaching involves audioconferences plus a residential on-campus course for core subject SPMX 701 (usually last Friday – Sunday in January) and SPMX 711 (two days usually start of July). Internet access is required for additional web-based learning.

The following papers are available:

##### **SPMX 701 Issues in Sports Medicine (compulsory) 30 points (first semester)**

This compulsory paper has been designed to provide a core academic background in the sciences required for sports and exercise medicine. It includes current issues in anatomy, physiology, nutrition, human movement and bioethics in sport. Three-day residential in January in Dunedin.

##### **SPMX 702 Medical Aspects of Exercise 15 points (not offered 2013, expected to be offered first semester 2014)**

The issues that relate to the supervision and care of individuals involved in sport and recreational activities. This paper will provide a basis for the understanding of medical issues relating to specific sporting events, exercise in extreme environments, exercise stress testing and the role of sports medical staff who work with individual athletes or sporting teams.

**SPMX 703 Sports Nutrition**  
**30 points (second semester)**

The relationship between nutrition and exercise and the application of human nutrition to sport and sport performance. This paper is designed to increase your knowledge and skill to evaluate the inter-relationship between nutrition and sport through the study of selected topics of current interest. More specifically it will enable you to update your knowledge of the role of nutrition in exercise and sport and to evaluate the extent to which nutrition and nutritional supplements play in athletic performance. A basic knowledge of the fundamentals of nutrition and the general nutritional needs of the physically active person will be assumed.

**SPMX 704 Health and Human Performance A**  
**15 points (not offered 2013, expected to be offered second semester 2014)**

Recognition and management of existing clinical conditions such as asthma, diabetes and epilepsy in those who lead active lifestyles. This paper has been designed primarily for those with registerable clinical qualifications. It provides specific information on a number of medical conditions and their relationship in individuals who participate in sport and other physical activities.

**SPMX 705 Health and Human Performance B**  
**15 points (not offered 2012, expected to be offered second semester 2013)**

Physical, psychological and social needs of special groups in the sport and recreational setting, including the young athlete, the veteran, the female athlete and the disabled competitor. This paper provides a framework for the recognition of the special concerns in sport and physical activity for certain groups of participants based on age, gender and physical status.

**SPMX 706 Sports Physiotherapy**  
**30 points (first semester 2013)**

Physiotherapy practices in the prevention and management of injuries to recreational and high performance athletes. This paper is specifically designed for registered physiotherapists to advance their base clinical knowledge into the specialised area of sport. Other registered health-care professionals may be admitted to this paper at the discretion of the academic convenor with approval from the Pro-Vice-Chancellor (Health Sciences).

**SPMX 707 Regional Sports Injury 1**  
**15 points (first semester)**

Supervision and care of individuals involved in sport and recreational activities with emphasis on prevention and treatment of commonly encountered injuries to the upper limb. This paper is restricted to registered medical practitioners and physiotherapists due to the applied clinical nature of its content. Other registered health professionals may be admitted to this paper with academic approval. It focuses on the upper body covering relevant functional anatomy, common sports injuries and their assessment, diagnosis and full management.

**SPMX 708 Regional Sports Injury 2**  
**15 points (second semester)**

Supervision and care of individuals involved in sport and recreational activities with emphasis on prevention and treatment of commonly encountered injuries to the lower limb. This paper is restricted to registered medical practitioners, physiotherapists and podiatrists due to the applied clinical nature of its contents. Other registered health professionals may be admitted to this paper with academic approval. It focuses on the lower body and includes relevant functional anatomy, common sports injuries and their assessment, diagnosis and full management.

**SPMX 709 Women in Sport: Health Issues**  
**30 points (second semester)**

Recognition and management of specific issues relating to the physically active female, including active leisure to high performance sport. This paper is designed for both clinical and non-clinical students.

**SPMX 710 Sports Ergonomics**  
**30 points (not offered 2013, expected to be offered first semester 2014)**

Interaction between the sportsperson and the environment and its effect on injury mechanisms and injury prevention, including interaction with other participants, the surface on which the sport is played and equipment used. This paper has application for clinical and non-clinical students and provides a framework of understanding for the principles of injury pathomechanics, tissue responses to loading and the role of sports equipment in sports injury prevention and rehabilitation.

**SPMX 711 Exercise Prescription**  
**30 points (second semester)**

Evidence-based clinical approach to exercise prescription. Links between physical activity and health in the contemporary primary-care setting that promotes interdisciplinary collaboration. Evidence will be presented regarding the association between physical activity and all-cause mortality and morbidity. Types of exercise, frequency, duration and intensity are explored in relation to disease prevention and treatment. Two day residential in July in Dunedin.

**Further information**

More detailed information can be found at:  
[www.otago.ac.nz/dsm/sportsmed](http://www.otago.ac.nz/dsm/sportsmed)

Register at:  
<http://dnmeds.otago.ac.nz/departments/medicine/sports/index.html>

Jan Brosnahan  
Course Co-ordinator, Department of Medicine  
Dunedin School of Medicine  
PO Box 913, Dunedin 9054  
Tel 03 474 7007 extension 8510  
Fax 03 474 7641  
Email [jan.brosnahan@otago.ac.nz](mailto:jan.brosnahan@otago.ac.nz)

Dr Hamish Osborne  
Academic Co-ordinator for Sport and Exercise Medicine  
Dunedin School of Medicine  
PO Box 913, Dunedin 9054  
Tel 03 474 7007 ext 8556  
Fax 03 474 7641  
Email [hamish.osborne@otago.ac.nz](mailto:hamish.osborne@otago.ac.nz)

## SURGICAL ANATOMY

### PROGRAMME OF STUDY

#### *Postgraduate Diploma in Surgical Anatomy (PGDipSurgAnat)*

This course is a one-year programme providing instruction in clinically relevant anatomy to qualified medical practitioners. The diploma is targeted at Australasian doctors in the first three years of their postgraduate training intending to pursue a career in surgery or radiology; priority will be given to those in their second year. The diploma is supported and co-badged by the Royal Australasian College of Surgeons. The programme consists of four taught papers, and includes both distance learning and two-week intensive campus-based instruction with hands-on cadaver dissection.

#### *SUAX 701 Upper Limb and Thorax 30 points (first semester)*

Anatomy of the upper limb and thorax relevant to the clinical practice of surgery and radiology. The paper includes regional cadaver dissection.

Limited to PGDipSurgAnat

#### *SUAX 702 Lower Limb and Pelvis 30 points (first semester)*

Anatomy of the lower limb and pelvis relevant to the clinical practice of surgery and radiology. The paper includes regional cadaver dissection.

Prerequisite or corequisite: SUAX 701

Limited to PGDipSurgAnat

#### *SUAX 703 Abdomen and Neck 30 points (second semester)*

Anatomy of the abdomen and neck relevant to the clinical practice of surgery and radiology. The paper includes regional cadaver dissection.

Prerequisite or corequisite: SUAX 701

Limited to PGDipSurgAnat

#### *SUAX 704 Head, Spine, Neuroanatomy and Skin 30 points (second semester)*

Anatomy of the head (including basic neuroanatomy), spine and skin relevant to the clinical practice of surgery and radiology. The paper includes regional cadaver dissection.

Prerequisite or corequisite: SUAX 701

Limited to PGDipSurgAnat

### Further information

Kathryn McClea  
PGDipSurgAnat Administrator  
Department of Anatomy  
University of Otago, PO Box 913, Dunedin 9054  
Tel 03 479 7131  
Fax 03 479 7254  
Email [kathryn.mcclea@otago.ac.nz](mailto:kathryn.mcclea@otago.ac.nz)  
Web <http://surgicalanatomy.otago.ac.nz/>

## TRAVEL MEDICINE

The Postgraduate Certificate and Postgraduate Diploma in Travel Medicine (PGCertTravMed and PGDipTravMed) provide advanced, formal, nationally-recognised qualifications for health professionals who practise travel medicine. Because of the increasing complexity of international travel there is a need for health practitioners with special skills in this area.

The programme is open to those with a wide variety of backgrounds and qualifications, although admission is subject to the approval of the Pro-Vice-Chancellor (Health Sciences).

Students can complete the Postgraduate Diploma of Travel Medicine in one year of full-time study in 2013.

### QUALIFICATIONS AVAILABLE

#### *Postgraduate Certificate and Diploma in Travel Medicine (PGCertTravMed and PGDipTravMed)*

#### *Master of Travel Medicine (MTravMed)*

### PROGRAMME OF STUDY

#### *Postgraduate Certificate and Diploma in Travel Medicine (PGCertTravMed and PGDipTravMed)*

The certificate requires 60 points, Travel Medicine 1 and Travel Medicine 2.

The diploma requires 120 points, Travel Medicine 1, Travel Medicine 2, GENX 719 Tropical Medicine and 30 points from the following list. Other papers may be approved by the Board of Studies for Primary Health Care.

#### *GENX 713 Travel Medicine 1: Introductory Concepts (subject to approval) 30 points (first semester)*

This paper provides an overview of travel medicine as a specialty area of practice, will cover the principles of preparing the intending traveller with a focus on prevention, and a detailed knowledge of vaccine preventable illness and travel vaccines. Students will be informed of relevant resources available for keeping up to date in this field of increasing publications relevant to clinical practice. There are two residential periods in Wellington.

#### *GENX 719 Tropical Infectious Diseases 30 points (first semester)*

This paper is designed to provide suitably qualified health professionals with theoretical and practical knowledge sufficient to manage tropical diseases. The paper is of interest to any health professional whose practice brings them into contact with travellers, migrants or those who plan to work in tropical countries. Topics include relevant tropical diseases (arboviruses, malaria, helminthic infections, tuberculosis, HIV); their epidemiology, presentation, diagnosis, treatment and management both in developing countries and in New Zealand. There are two residential periods in Wellington.

#### *GENX 720 Refugee and Migrant Health 30 points (Second Semester)*

This paper is designed to provide health professionals with the theoretical and practical knowledge necessary to manage the health needs of, refugee and migrant groups. It also covers the needs of and challenges facing, those working in aid projects. The principles of competent cross-cultural practice will be covered. Working with interpreters and with groups for whom English is a second language forms an essential part of the course. There are two residential periods in Wellington.

***GENX 714 Travel Medicine 2: Applied Concepts (subject to approval)***

***30 points (second semester)***

This paper will cover the specific clinical concerns of travelers with special needs including returning travellers, the humanitarian worker, pregnant women, elderly, visiting friends and relatives, children, long-term expatriates, the immune-compromised traveller, the humanitarian and aid worker, and the adventure traveller. Specific clinical contexts to be covered include fitness to fly/aviation medicine, food and water-borne disease, preventing food and water-borne disease, preventing insect-borne disease, sexually transmitted infections and the traveller, travel dermatology, tuberculosis and travel, and the unwell returning traveller or recent migrant. There are two residential periods in Wellington.

***HASX 417 Health Sciences Research Methods***

***30 points (full year)***

This paper provides an introduction to quantitative and qualitative research methods used in the health sciences. Critical appraisal and literature review skills are an integral part of the course. On completion of the course, students will be able to design and create a master's-level research project under supervision. There are three on campus block courses in Wellington during the paper.

***PRHX 702 Expedition and Wilderness Medicine***

***30 points (not offered 2013, expected to be offered second semester 2014)***

This paper is designed to provide participants with an understanding of planning and preparation for activities in the wilderness environment, both within New Zealand and overseas, and medical problems associated with the wilderness environment and the special considerations of providing medical care in an outdoor environment including risk assessment and resource management. There are two residential periods in Wellington.

**PROGRAMME OF STUDY**

***Master of Travel Medicine (MTravMed)***

The Master of Travel Medicine (MTravMed) degree provides a multidisciplinary higher qualification for health professionals in travel medicine. Entry to the programme is normally on the basis of successful completion of a Postgraduate Diploma in Travel Medicine including approved research methods points; other postgraduate diplomas with equivalent travel medicine content may also, with approval, satisfy the entry requirements.

The MTravMed is completed by a research thesis (120 points). Graduates have an advanced understanding of health care needs and skills associated with international travel, migration and recreation, and an ability to formulate and conduct travel-related research independently.

**Further information**

Postgraduate Co-ordinator  
Department of Primary Health Care and General Practice  
University of Otago, Wellington  
PO Box 7343, Wellington 6242  
Tel 04 385 5995  
Email [primarycare.distance@otago.ac.nz](mailto:primarycare.distance@otago.ac.nz)  
Web [www.otago.ac.nz/studyprimaryhealthcare](http://www.otago.ac.nz/studyprimaryhealthcare)

# Qualifications

All of the papers for the qualifications listed below are available through Distance Learning. In many cases, it is possible to take individual papers without necessarily intending to complete the full qualification. In addition, several other papers are offered which need not be for a particular qualification, but which can be taken for credit to a degree or diploma.

## Higher Education Development Centre

- ~ Postgraduate Diploma in Higher Education
- ~ Postgraduate Certificate in Higher Education

## Division of Humanities

- ~ Doctor of Education
- ~ Master of Education
- ~ Master of Indigenous Studies
- ~ Master of Ministry
- ~ Master of Social and Community Work (no new enrolments accepted)
- ~ Master of Social Work
- ~ Master of Teaching
- ~ Postgraduate Diploma in Arts Subjects in Education
- ~ Postgraduate Diploma in Ministry
- ~ Postgraduate Diploma in Social and Community Work (no new enrolments accepted)
- ~ Postgraduate Diploma in Social Welfare
- ~ Postgraduate Diploma in Teaching
- ~ Postgraduate Certificate in Teaching
- ~ Postgraduate Diploma in Theology
- ~ Graduate Diploma in Teaching endorsed in Early Childhood Education
- ~ Bachelor of Social Work (3rd and 4th years only)
- ~ Bachelor of Theology

## Division of Sciences

- ~ Postgraduate Diploma in Applied Science in Clothing and Textile Sciences
- ~ Postgraduate Diploma in Science in Clothing and Textile Sciences
- ~ Postgraduate Diploma in Science in Community Nutrition
- ~ Diploma in Sports Studies (no new enrolments accepted)
- ~ Certificate in Fitness Management (no new enrolments accepted)

## Division of Health Sciences

Unless specified otherwise, the schools responsible for papers and programmes are indicated as follows:

Christchurch – University of Otago, Christchurch  
(Christchurch School of Medicine and Health Sciences)

Dunedin – Dunedin School of Medicine

Wellington – University of Otago, Wellington  
(Wellington School of Medicine and Health Sciences)

- ~ Master of Aviation Medicine (Wellington)
- ~ Master of Clinical Pharmacy (Dunedin)
- ~ Master of General Practice (Christchurch, Dunedin, Wellington)
- ~ Master of Health Care (Wellington)
- ~ Master of Health Sciences endorsed in:
  - Aeromedical Retrieval and Transport (Wellington)
  - Aviation Medicine (Wellington)
  - Clinical Education (HEDC Dunedin)
  - Clinical Research (Wellington)
  - Gerontology (Christchurch)
  - Hazard Assessment and Management (Dunedin)
  - Mental Health (Christchurch)
  - Musculoskeletal Management (Christchurch)
  - Nursing (Christchurch)
  - Nursing (Clinical) (Christchurch)
  - Occupational Health (Dunedin)
  - Occupational Medicine (Wellington)
  - Pain and Pain Management (Christchurch)
  - Rehabilitation (Wellington)
- ~ Master of Physiotherapy endorsed in:
  - Acupuncture (Dunedin)
  - Mechanical Diagnosis and Therapy (Dunedin)
  - Neurorehabilitation (Dunedin)
  - Occupational Health Physiotherapy (Dunedin)
  - Orthopaedic Manipulative Physiotherapy (Dunedin)
  - Sports Physiotherapy (Dunedin)
- ~ Master of Primary Health Care (Christchurch, Dunedin, Wellington)
- ~ Master of Travel Medicine (Wellington)

- ~ Postgraduate Diploma in Aeromedical Retrieval and Transport (Wellington)
- ~ Postgraduate Diploma in Aviation Medicine (Wellington)
- ~ Postgraduate Diploma in Child Health (CHHX 701 Dunedin; CHHX 702 Wellington)
- ~ Postgraduate Diploma in Clinical Pharmacy (Dunedin)
- ~ Postgraduate Diploma in General Practice (Dunedin, Wellington)
- ~ Postgraduate Diploma in Health Informatics (Dunedin)
- ~ Postgraduate Diploma in Health Sciences endorsed in:
  - Addiction and Co-existing Disorders (Christchurch)
  - Aeromedical Retrieval and Transport (Wellington)
  - Bioethics (Dunedin)
  - Clinical Research (Dunedin)
  - Gerontology (Christchurch)
  - Hazard Assessment and Management (Dunedin)
  - Interpersonal Psychotherapy (Christchurch)
  - Mental Health (Christchurch)
  - Musculoskeletal Management (Christchurch)
  - Nursing (Christchurch)
  - Nursing (Primary Health Care) (Christchurch)
  - Occupational Health (Dunedin)
  - Pain and Pain Management (Christchurch)
  - Rural Nursing (Christchurch) (subject to approval)
- ~ Postgraduate Diploma in Industrial Health (Dunedin)
- ~ Postgraduate Diploma in Medical Technology endorsed in:
  - Cardiology (Wellington)
  - Sleep Medicine (Wellington)
- ~ Postgraduate Diploma in Musculoskeletal Medicine (Christchurch)
- ~ Postgraduate Diploma in Obstetrics and Medical Gynaecology (Dunedin)
- ~ Postgraduate Diploma in Occupational Medicine (Wellington)
- ~ Postgraduate Diploma in Ophthalmic Basic Sciences (Dunedin)
- ~ Postgraduate Diploma in Physiotherapy endorsed in:
  - Acupuncture (Dunedin)
  - Musculoskeletal Physiotherapy (Dunedin)
  - Occupational Physiotherapy (Dunedin)
- ~ Postgraduate Diploma in Primary Health Care (PRHX 701 Wellington; other papers Christchurch, Dunedin, Wellington)
- ~ Postgraduate Diploma in Rehabilitation (Wellington)
- ~ Postgraduate Diploma in Rural and Provincial Hospital Practice (Dunedin)
- ~ Postgraduate Diploma in Sport and Exercise Medicine (Dunedin)
- ~ Postgraduate Diploma in Surgical Anatomy (Dunedin)
- ~ Postgraduate Diploma in Travel Medicine (Wellington)
- ~ Postgraduate Certificate in Civil Aviation Medicine (Wellington)
- ~ Postgraduate Certificate in General Practice (Dunedin, Wellington)
- ~ Postgraduate Certificate in Health Sciences endorsed in:
  - Addiction and Co-existing Disorders (Christchurch)
  - Advanced Clinical Nursing (Christchurch)
  - Aeromedical Retrieval and Transport (Wellington)
  - Child and Adolescent Mental Health (Christchurch)
  - Clinical Rehabilitation (Wellington)
  - Clinical Research (Dunedin)
  - Family and Systems Therapies (Wellington)
  - Forensic Mental Health (Christchurch)
  - Gerontology (Christchurch)
  - Hazard Assessment and Management (Dunedin)
  - Mental Health (Christchurch)
  - Musculoskeletal Management (Christchurch)
  - Nursing (Advanced Mental Health) (Christchurch)
  - Nursing (Gerontology) (Christchurch)
  - Nursing (High Acuity) (Christchurch)
  - Nursing (Leadership and Management) (Christchurch)
  - Nursing (Long-term Condition Management) (Christchurch)
  - Nursing (Primary Health Care) (Christchurch)
  - Nursing (Specialty Mental Health) (Christchurch)
  - Occupational Health (Dunedin)
  - Pain and Pain Management (Christchurch)
  - Perinatal Mental Health (Christchurch)
  - Radiation Therapy Advanced Practice (Wellington)
  - Reproductive Mental Health (Christchurch)
- ~ Postgraduate Certificate in Medical Technology (Wellington)

- ~ Postgraduate Certificate in Musculoskeletal Medicine (Christchurch)
- ~ Postgraduate Certificate in Occupational Medicine (Wellington)
- ~ Postgraduate Certificate in Pharmacy endorsed in
  - Medicines Management (Dunedin)
  - Social Pharmacy (Dunedin)
- ~ Postgraduate Certificate in Physiotherapy endorsed in:
  - Acupuncture (Dunedin)
  - Musculoskeletal Physiotherapy (Dunedin)
  - Neurorehabilitation (Dunedin)
  - Occupational Health Physiotherapy (Dunedin)
- ~ Postgraduate Certificate in Primary Health Care (PRHX 701 Wellington; other papers Christchurch, Dunedin, Wellington)
- ~ Postgraduate Certificate in Primary Health Care endorsed in Long-Term Condition Management (Wellington)
- ~ Postgraduate Certificate in Rehabilitation
- ~ Postgraduate Certificate in Rural and Provincial Hospital Practice (Dunedin)
- ~ Postgraduate Certificate in Travel Medicine (Wellington)
- ~ Postgraduate Certificate in Women's Health (Dunedin)
- ~ Certificate in Health Promotion (Wellington)

